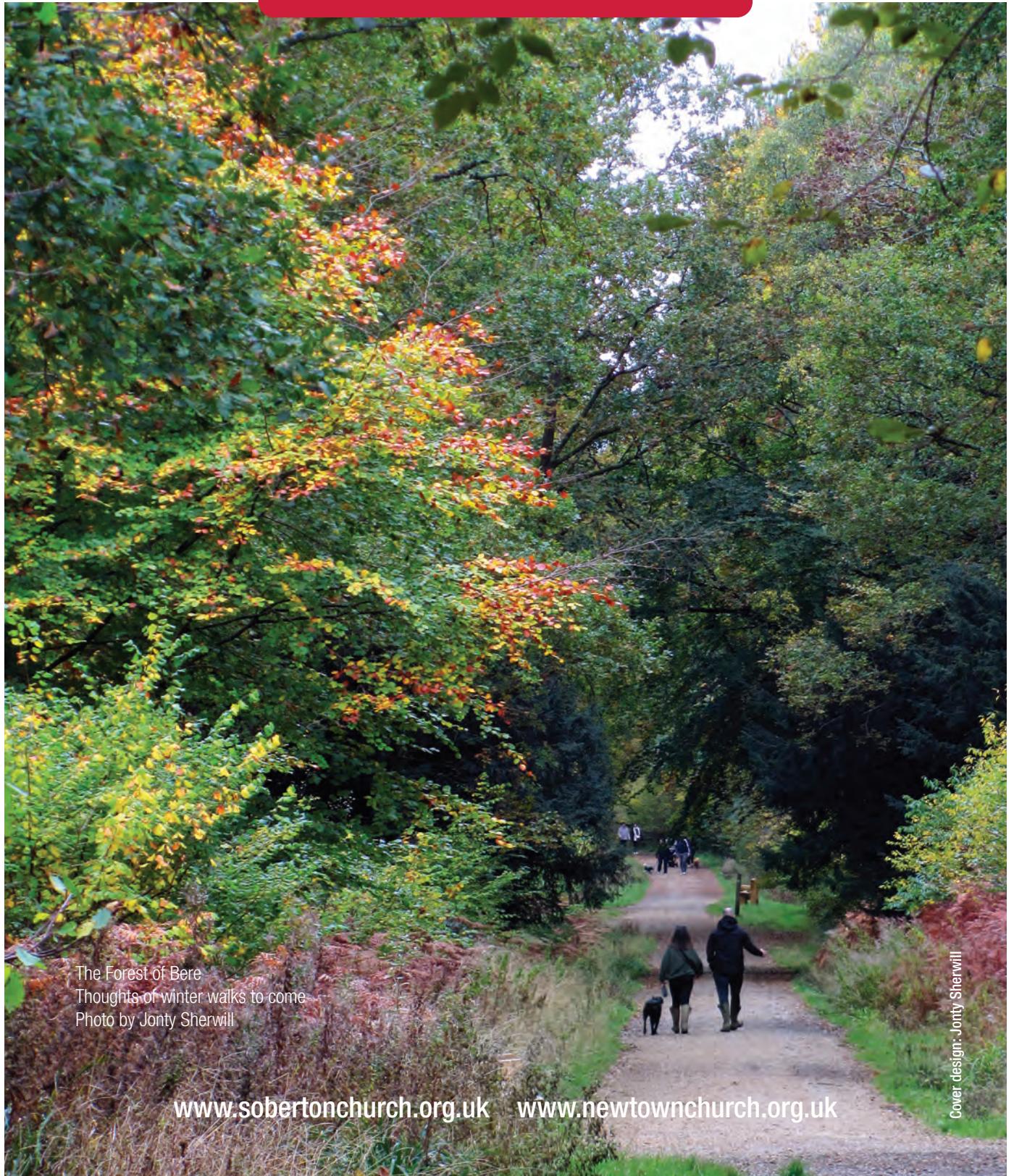


Soberton & Newtown

PARISH MAGAZINE For all the community, delivered FREE to over 700 households

December - January 2026



The Forest of Bere
Thoughts of winter walks to come
Photo by Jonty Sherwill

www.sobertonchurch.org.uk www.newtownchurch.org.uk

Cover design: Jonty Sherwill

St. Peter's, Soberton and Holy Trinity, Newtown

For details of Benefice and other local church services, please refer to page 4

For any enquiries, please contact the following

Benefice of Soberton, Newtown and Hambledon

The Reverend Liz Quinn

Associate Priest in the Meon Valley Parishes.

Particular focus on the Benefice of Soberton, Newtown and Hambledon.

revliz7@icloud.com

07518 247637

Barn Church

Emma Andersen, leader of Barn Church

Associate Priest in the Meon Valley Parishes emma.barnchurch@gmail.com

Our Lady Queen of the Apostles, Roman Catholic Church

St. Martin's Street, Bishop's Waltham, SO32 1DN

Father Mario Toma 02380 612430

Parish Office 02380 273882

6.00 pm Saturday (First Mass of Sunday)

9.30 am Sunday

There are Sunday evening services in Winchester and in Fareham.

For further information, please contact Anthony McEwen 01489 877448

The Methodist Circuit. Services in the area are as follows:-

Shirrell Heath 10.30 am & 6.00 pm

Waltham Chase 10.30 am

Bishops Waltham 10.30 am

Swanmore 10.30 am & 6.00 pm

Hambledon 11.00 am & 6.00 pm

MAGAZINE COMMITTEE & PRODUCTION TEAM

Chairman
Editor
Advertising
Circulation
Treasurer
Secretary

Perry Abbott 02392 632338
Gill Gray 07711 058760
Kate Buttriss 07801 441998
Pete Woodacre 01489 877768
Jerry Lipscombe 07899 862235
Paula Hobbs 07469 258022

cpgabbott@hotmail.com
gill.highcroft@btinternet.com
kate.buttriss@gmail.com
petewoodacre@gmail.com
lipscoj3@gmail.com
paulajhobbs@live.co.uk

Typesetting of adverts and printing: Solent Design Studio
Front cover design: Jonty Sherwill 01329 835161

solentdesignstudio.co.uk
www.sherwilldesign.com



Contents

4	❖ The Benefice of Soberton, Newtown & Hambledon – Services
	❖ Barn Church
	❖ Christmas and New Year at the RC church of Our Lady Queen of Apostles (BW)
5	❖ Foreword from Rev Liz Quinn
	❖ Appointment of the Priest-in-Charge of the Meon Valley Parishes
6	❖ Earlybirds Village Preschool: Spaces Available
	❖ Crib Service, St Peter's Church
7	❖ Soberton and Newtown Good Neighbours Group AGM and update
8	❖ Eat drink and be merry ... Sarah Barclay
9	❖ Christmas Carols and Cheer – 3P's
	❖ Annabelle's home-made produce - ideal presents for Christmas!
10	❖ Segalula - Songs for a Winter's Night
	❖ Soberton & Newtown Local History Society
11	❖ Christmas Craft Workshop at St Peter's
12	❖ Join the Adventure with Brownies!
	❖ Soberton & Newtown Guides go to the Circus
13	❖ Christmas Wreath Workshops at The Guide Hut
	❖ The Guide Hut Needs You!
14	❖ Macmillan Coffee Morning
	❖ Children's Week 2026 – join us to plan for 2026
	❖ Soberton and Newtown Ladies' Group
	❖ RBL – 2025 Newtown collection
	❖ Soberton Fete – your village needs you
15	❖ Messy Church! Join us in January!
16	❖ Local Woodend Author Kevin Jackson unveils captivating new novel:
	❖ Pop in for coffee and cake at St Peter's
	❖ Get involved at Droxford Junior School
17	❖ Dig for Droxford (Junior School)
	❖ Korea ... a Newtown veterans visit
18-34	❖ Classified Adverts – please support our local businesses
35	❖ What's on
	❖ Newtown Church Fete 2026
36	❖ In your garden ... A Winter Wonderland
37	❖ Meet Gary — our Accredited Community Safety Officer
38-39	❖ Local History ... Soberton's Secret Army
39	❖ RBL - Droxford & District Branch
40-42	❖ Meon Valley communities – lots going on!
40	❖ MV U3A, Wickham Society, BW Photographic Society
41	❖ Meon Valley Carers Group
42	❖ BW Festival. MV Lions Club
43	❖ Rustles in the leaves (Hampshire and IoW Wildlife Trust)
44	❖ Soberton Parish Council Chairman's Notes
45	❖ Winchester City Council – District Councillors
46-48	❖ Hampshire County Council
48-49	❖ Southwick Revival donates £75,000 to charity
50	❖ Meon Valley Community Bus Timetable
51	❖ Useful information
52	❖ PiNS Christmas Card 2025

**Please e-mail copy for the February / March magazine to
gill.highcroft@btinternet.com**

NEXT COPY DATE - 12th January 2026 (17:00)

The Benefice of Soberton, Newtown & Hambledon

Services

**December 2025
January 2026**

*Holy Communion is also
celebrated at Soberton at
09:30am every
4th Wednesday (before
coffee and cake)
...
and at Hambledon every
Wednesday at 09:30*

*Subject to change,
sometimes at short notice*

December				
7 th	0800	Holy Communion	Hambledon	
	1000	Holy Communion	Newtown	
	1030	Short Family Service	Hambledon	
14 th	1100	Holy Communion (Sunday Club)	Soberton	
	1100	Holy Communion	Hambledon	
	1600	Christingle	Hambledon	
21 st	1000	Holy Communion	Newtown	
	1100	Service of 9 Lessons and Carols	Soberton	
	1100	Service of the Word	Hambledon	
	1830	Service of 9 Lessons and Carols	Hambledon	
24 th	1700	Goodnight service	Hambledon	
	1800	Crib Service and carols (page 6)	Soberton	
	2200	First Communion of Christmas	Hambledon	
	2300	First Communion of Christmas	Soberton	
25 th	1000	Holy Communion	Newtown	
	1100	Holy Communion	Hambledon	
28 th	1100	Holy Communion	Hambledon	
January				
4 th	0800	Holy Communion	Hambledon	
	1000	Holy Communion	Newtown	
	1030	Epiphany SFS of Gifts	Hambledon	
11 th	1100	Holy Communion (Sunday Club)	Soberton	
	1100	Holy Communion	Hambledon	
18 th	1000	Holy Communion	Newtown	
	1100	Morning Worship	Soberton	
	1100	Service of the Word	Hambledon	
	1830	Evensong	Hambledon	
25 th	1100	Holy Communion	Hambledon	

Barn Church services for December – January

*ALL services are held at the Soberton and
Newtown Guide Hut, Soberton Recreation
Ground, Soberton Heath, SO32 3QH, unless
stated otherwise.*

*All services start with coffee and pastries
with a bouncy castle if its not raining.*

December 7th - doors open 9:30am
December 11th - Family Fun and Carols -
doors open 5pm
December 14th - Christingle - doors open
9:30am
December 21st - Christmas Celebration and
breakfast - doors open 9:30am
December 24th, 25th, 28th - No Service
January 4th - Walking Church - 9:30am Old
Winchester Hill - more details to follow
January 11th - doors open 9:30am
January 18th - doors open 9:30am
January 26th - doors open 9:30am

CHRISTMAS AT BARN CHURCH

We meet at Soberton Guide Hut, Soberton recreation ground, SO32 3QH

THURS 11th Dec doors open 5pm Family Carols

*Christmas fun for all the family, popcorn, hot chocolate, mulled wine and
mince pies included. Christmas Jumpers optional.*

SUN 14th Dec doors open 9:30am Christingle

*Join us in thinking about the Good News of Christmas with the help of
an orange and some sweets.*

SUN 21st Dec doors open 9:30am Christmas Celebration

*Our Christmas celebration, lots of fun and games with breakfast
provided.*

For more information visit www.barnchurch.uk
@barnchurch.uk



**Christmas and New Year services at the Roman Catholic church of Our Lady Queen of Apostles, Martins Lane, Bishops
Waltham SO32 1DN**

Carol Service, with the Shantyhead folk band, mulled wine and mince pies – Sunday 21 December at 6pm
Penitential Service 23 December at 7.30pm
Christmas Eve Mass – 24 December at 6pm
Christmas Day Mass – 25 December at 9.30am
New Year's Day Mass – Mary, the Mother of God - Thursday 1 January 2026 at 12 noon



Foreword from Rev Liz Quinn

Hello Everyone

As I write this, I am looking out of the window onto a glittery frosty scene. The sun is rising over the hill and catching the tops of the beech trees in the hanger on the opposite hill. Winter is coming in! Time for the hats and gloves! It is also a reminder that Christmas is on the way. By the time you read this, Advent will be upon us, a time of preparation.



I am sure that many of you will be busy making and buying presents for family and friends. You'll be decorating your Christmas tree and playing some Christmas music. Perhaps you'll be enjoying the Christmas Carols in Soberton Village Hall. Here at Holy Trinity and St. Peter's we're preparing for Christmas too. Getting ready for the Children's Christmas Craft Workshop and the Nativity Carol Service. Welcoming the school children and their families for their Christmas Service. Preparing to welcome you to the service of Nine Lessons and Carols, the First Communion of Christmas and the Christmas Day Holy Communion Service. We're even preparing for the New Year as we plan to celebrate the arrival of the Three Kings at Messy Church. You are all very welcome to St. Peter's and Holy Trinity. Please come and celebrate Christmas and the birth of Jesus with us all. You will find details in this magazine. May I ask you to remember our neighbours and friends who might be alone during Christmastide. Perhaps you could visit them or invite them to join you for a meal or a Christmas walk.



May I wish you all a very happy Christmas filled with joy, love and the blessings of the Christ-child,

Liz

Appointment of the Priest-in-Charge of the Meon Valley Parishes

Rev. Liz: I am delighted to share this news with you:

Bishop Jonathan has appointed the Revd Sandra Matthews, currently Rector of Whippingham with East Cowes and Priest in Charge of Wootton, as interim Priest-in-Charge of Swanmore, Soberton, Hambledon and Newtown, and the Meon Bridge Benefice.

Prior to her work on the Isle of Wight, Sandra lived and worked in Israel for just under two years, where she ministered as cleric and headteacher, to the local community through her role as Director of the Anglican International School in Jerusalem. She was attracted to that role due to her commitment to reconciliation ministry, and her pastoral desire to help people in conflict connect through respect and greater understanding.

Her long standing commitment and work with children has not, however, been to the exclusion of other age groups, as seen by her voluntary work as chaplain with hospitals and residential care homes.

Sandra has a great passion for multi-generational ministry, and for discerning new ways of 'being' church, but as a strong believer in balance, she also enjoys the richness of tradition and the sense of timeless stability this brings to many worshippers.

Although sad to be leaving the caring and supportive congregations in her current parishes on the Isle of Wight, she is looking forward to serving with the ministry team in the Meon Valley.

Sandra will be licensed by bishop Jonathan on Wednesday 25th February 2026 at St. Barnabas, Swanmore.

Earlybirds Village Preschool: Spaces Available



Earlybirds is our local charity preschool situated alongside Newtown Soberton Infant School, in Newtown, for children aged 2 to school age.

We're a proud Ofsted-rated 'GOOD' nursery nestled in the heart of the countryside, where every day is filled with wonder, learning, and laughter. At Earlybirds, we believe in creating magical, nurturing experiences for our youngest learners—helping them grow, explore, and thrive in a safe and inspiring environment.

Our beautiful rural setting is more than just a location—it's a community. We cherish the close-knit relationships we build with families and neighbours, and we love that our children get to experience nature, fresh air, and the warmth of village life as part of their everyday learning.

Our location joined to Newtown Soberton Infant School (with Early Years recently rated Outstanding by Ofsted) means that the transition to school is a smooth one, with the children already being used to the school facilities and teaching team.

We offer wrap-around care from 7.30am to 5pm, with breakfast and after-school clubs run by the core Earlybirds team.

There are currently spaces in the preschool due to the current cohort being part of a historically low birth-rate year (our rural location compounds this issue). We are holding a drop-in Open Day at the preschool on Saturday 29 November, 9am until 11.30am where we hope to share the Earlybirds magic with prospective parents. We also welcome interested parents to visit the setting by appointment at any time.

Here's a testimonial from one of our current parents, Maddy C:

"The most incredible pre-school where children are encouraged to learn through play. They offer exceptional indoor and outdoor resources including mud kitchen, obstacle course building, sand pit activities, role play areas, reading and writing areas and most importantly incredible messy play activities! The staff are amazing and very experienced in working with children. No two days are ever the same at Earlybirds, keeping the children engaged and excited to explore different activities every day. We are so happy that we chose this preschool for our children."

Please do spread the word amongst the local community, and get in contact if you are looking for a preschool place for your child, either now or in the future. We would love to show you around!

<https://www.earlybirdspreschool.co.uk/>
Email: earlybirds16@hotmail.co.uk
Telephone: 01329 833161

St Peter's, Soberton

Crib Service



Wednesday 24th December 2025, 6pm

Come dressed as an angel, star, sheep or shepherd!

Numbers are limited so come early to avoid disappointment!
Contact jack@swallow2.plus.com for further information.

Participants can join us in the Church Rooms from 5.30.

Soberton and Newtown Good Neighbours Group AGM and update

The Soberton and Newtown Good Neighbours Group AGM on 4th November 2025 was well attended, and we now have 20 volunteer drivers in our group.

We have had another busy year, completing over 130 journeys – an average of around 11 journeys each month. We take residents to all types of medical appointments and provide a really vital service to people who are unable to drive.

We have been asking our clients to consider signing up to the **Priority Services Register**. If you are eligible to go on the Register, you receive priority support from your gas, electricity and water providers in an emergency. Please see further details below.

We have asked **Meon Valley Heartstart** to run an emergency life-saving skills training session for our volunteers at Soberton Village Hall on **Wednesday 21st January 2026**. We anticipate having extra spaces and you would be very welcome to come along and take part. Please contact us for more information.

If you need our help, please give us a call. We drive people of all ages. If you can give us some notice of your appointment that would be great, but we do try to help with last-minute requests where we can.

We are always on the lookout for new drivers. It's a really rewarding group to be part of, and you can commit to as little or as much driving as you are able to. Please contact one of the two Kates if this is something you would be interested in helping with.

Are you (and your neighbours) on the **Priority Services Register?**



Let your supplier know how to support your household during an emergency.

Peace of mind for **gas, water or power** supplies
FREE to join if anyone in your household is/has



For more information or to sign up:
goodneighbours.org.uk/psr or call 07500 110101



Need Transport to Medical Appointments?



SOBERTON AND NEWTOWN Good Neighbours Group

We are here to drive local people, of all ages, to hospitals, GP surgeries, dentists, opticians and other health practitioners.

Our friendly volunteer drivers use their own cars, are all DBS checked and fully insured.

A donation towards fuel costs is requested.

For more information, call:

Kate Harvey on 07843 496 852 or Kate Chesters on 07710 716 664



www.soberton-pc.gov.uk

CAN YOU HELP US?

If you would like to *join* our driving team, we would love to hear from you. All our volunteer drivers decide which journeys they can offer, and are reimbursed for their mileage.

Eat drink and be merry

Go local for easily the most delicious food this winter and into Christmas.



As the festive season approaches, I thought it would be fun to flag up all the delicious local foods and wines I have personally enjoyed eating (some in great quantities) through the year...and would encourage everyone to do the same. Move over Fortnum & Mason, even the grandest of Christmas hampers would be lucky to be filled with just a few of our unbelievably delicious local creations. Of course I am not denying that home grown vegetables shouldn't take pride of place at any edible event, but failing that, I would like to trumpet the very best of the local food, all sold nearby.

First up are the amazingly delicious cheeses which seem to have proliferated in availability since lockdown. If you haven't tried the Isle of Wight Cheese Company cheeses – the best in my view is their delicious brie-like Isle of Wight Soft which (but not as pongy and heavy, just fantastically good), then closely followed by their Blue which is flavoursome but doesn't give you that sensation of salty mould that dear old Stilton is prone to do. Then of course for a bit of heat, Old Winchester Cheddar Cheese is beautifully tangy and brittle.

For a firmer soft, camembert-like cheese, go for Tunworth which originates from Hampshire but has now gone nationwide but still distributing from Hampshire.

Of course Isle of Wight tomatoes are the best in the world, move over Italy - and if you want to drink them, then the heartily packaged Isle of Wight Turner & Hardy are worth trying – with not only the plain juice but spicy versions to perk up a sluggish festive body.

The next delicious local essential is the utterly amazing bread from Jeremy and Jo at the Bakehouse in Soberton. I am amazed how far word has spread about their bread. I caught a friend from Upham lurking by the rabbit hutch the other day, collecting her weekend supplies, but then again, I'm not surprised as it is quite simply the most delicious sourdough I have ever eaten (and I'm fussy). We love the seeded loaf and the focaccia has become a weekend staple. The charm of collecting bread still warm from the oven presented in a pretty rabbit hutch isn't lost on me either. All in all, a pleasure from start to finish and incredibly easy to order on their website.

We all know that fish is good for us but what is good for rivers? Chalk Stream Trout hails from the Test Valley and is now found on the snazziest and most discerning of menus. Again, another fridge staple and brilliant Christmas meal solution is their Hot Smoked Trout which is generous in texture and with a bit of salad and some of Jeremy and Jo's bread a perfect Christmas snack!

I mourn the closure of the milk dispenser at Meonstoke Stores. There was something very satisfying about filling reusable glass milk bottles with locally grazed milk but for as long as it lasted, it was a real porridge improver.

And so on to sparkling wine. We are now residents of a new France. Well after a fashion. Vineyards as we see and know, are springing up all over Hampshire and beyond. Wine awards just keep rolling in. My absolute favourite The Grange Pink Dry English Sparkling Wine with its fresh, fruity character. Another highlight foodwise this year was the Grange 'Thursday Lates', their low key, trestle table seated, gourmet barbeque and sparkling wine evenings. Sitting watching the sunset over the vineyard didn't feel very much like England at all. And so that brings me onto the luxurious foodie destination which is the new incarnation of Hambledon Vineyard. We went on a warm summer's evening with a couple of friends a few months ago and it was a very spoiling gastronomic experience. I am yet to try the pizza area which will be another compelling destination once we get winter out of the way.

Moving onto sweet things. Jude's ice cream seems to be taking over the country. When I bought my first tub of Jude's ice cream years ago, I was surprised how quickly it softened – so you can't leave it, like probably ice creams laden with unspeakable long-life ingredients, lying around in the car hoping it will stay frozen for a while, but the compromise is that it is the silkiest version of any ice cream in the best iterations of flavours you can hope for. When I accidentally bought their vegan salted caramel I thought it might not be as nice as a non-vegan recipe, but it was beyond delicious.

And finally to local chocolate companies – the best and most superior is the peppermint laced Summerdown chocolate. I know a friend who is implored to send these chocolates off to America so consumed with passion for the flavour and texture the eager recipient is.

Is that enough? I hope so! Supporting our independent shops selling this delicious, high quality food is not only a good way of eating better, but it also keeps the carbon footprints down by avoiding unnecessary airmiles on imports.

Happy Christmas and happy local eating!

Sarah Barclay ... Author of Eden's Keepers publ Clearview Books



CHRISTMAS CAROLS & CHEER

A family-friendly event - a chance to find your
Christmas spirit with friends, family and
neighbours!

18 DECEMBER - 6:30 PM

**CAROLS . MULLED WINE . MINCED
PIES . GOOD TIME**

SOBERTON VILLAGE HALL

Organised by the 3Ps

This event is free to attend... but donations towards next years
event are very much welcomed so we can keep this going for the
community in the years ahead

Annabelle's HOME-MADE PRODUCE ideal presents for CHRISTMAS!

I am raising money for a volunteering trip to Nepal in 2026 and we've made loads of homemade produce to enjoy at home or give as Christmas presents! While stocks last, I am offering;

Apple Chutney (1lb)

Crab Apple (1lb) or Quince Jelly (1lb)

Marmalade (1/2lb)

£3.50 each or £10 for 3

***Christmas gift bags with apple chutney, Old Winchester cheese and
Peter's Yard crackers for £12.50 each***

Add a box of Lindt chocolates for £19 each

Also, limited stocks of Blackberry Vodka

£12.50 for 125 ml £25 for 250ml

For more information or to place an order, please contact me on 07768 172644 or email me
on kegraham@live.co.uk.

Thank you for your support! Annabelle Graham





Songs for a Winter's Night

We're Segalula – a group of local ladies, who **love** to sing together, united by harmony, friendship, and a passion for a cappella.

We're proud to be part of the local community and we'd love you to join us at our next event:

Songs for a Winter's Night at the Shedfield Study Centre (behind St John's Church)

Wednesday, December 17th, 7-9pm

Enjoy an evening of harmony with some Christmas favourites and lots of musical surprises! With a collection in aid of the Meon Valley Food Bank.

Tickets £5 on the door (cash only please) to include a glass of wine or a soft drink.
Free entry for under 16s.

Follow Segalula on Facebook for updates, and future events,
or better yet, come along and hear us in person. We'd love to sing for you!



Soberton & Newtown Local History Society

As we come to the end of another year, the History Society can look back on some fantastic talks and visits organised by your hard-working committee! November's talk was by historian Dr Cheryl Butler - you may have seen her on TV in the summer talking about old Southampton. This time she spoke to us about the Life and Times of Mary Beale, who can claim to be England's first professional female artist in the 17th century and who spent some of her life at Allbrook, on the outskirts of Southampton.



There is no December meeting, but our next event will be our Annual New Year lunch on Thursday 8th January, this year at the Lysses Hotel in Fareham. Any member is welcome, but if you haven't yet put your name down, do get in touch as soon as possible.

We have an exciting programme planned for next year – one of the highlights will undoubtedly be our 4 day Spring visit to Bedford and surrounding area, including a visit to Bletchley Park.

Our next talk will be Thursday 12th February at Rookesbury Hall and will be about The Swing Riots, to be confirmed in the next magazine.



Christmas Craft Workshop

Monday 22nd December

10:30am - 1:30pm

St Peter's Church, Soberton

£5 per child

Includes lunch for
parent and child

£10 max per family

Contact Jackie to reserve your place

Tel: 07940 649691 • jack@swallow2.plus.com

Join the Adventure with Brownies!



Are you looking for fun, friendship, and adventure for your daughter? Brownies is the perfect place for girls aged 7 to 10 to discover new skills, make lasting friendships, and enjoy exciting challenges every week!

Soberton & Newtown Brownies welcomes all girls within the local area to get involved in a range of activities – from crafts and games to outdoor adventures and community projects. Led by trained volunteers, we provide a supportive, safe, and inspiring environment for every girl to shine.

- Make new friends
- Earn badges and awards
- Take part in fun trips and events
- Build confidence and learn new skills

We meet every other Monday night from 5:30pm-7:30pm, at The Guide Hut, Heath Road, Soberton Heath, SO32 3QH.

If your daughter is aged 7–10 and would like to join the Brownies, we'd love to hear from you! For more information or to sign up, please contact us at sobertonnewtownbrownies@gmail.com or visit www.girlguiding.org.uk/joinus.

Be part of something brilliant – join Brownies today!

Mandy, Paula, Victoria & Katie
(Brown Owl, Snowy Owl, Mole & Penguin)

Soberton & Newtown Guides go to the Circus

Six Brownies came up to Guides to start the term bringing our numbers to 17. We have also been very fortunate that Victoria Rogers has been able to join us for the term, giving us 4 leaders and lots of opportunity to work with the girls in smaller groups.

This term has been an action packed one with many exciting adventures:

- In September we had a sleepover and helped prepare for the Division Circus day – which involved a skills workshop, giant clown trousers, lots of side shows, candy floss and of course an Ice Cream van.
- In October we completed a Wellbeing Challenge – involving Emotional, Environmental, Physical and Financial activities, a tea tasting session and mixing up new flavours for hot chocolate, finishing with a tea party.
- In November we made giant poppies and individual poppies for the fallen from our villages. You will have seen them displayed at the two churches and on our Hut.
- December brings a Christmas party, a trip to the cinema, and we will end the term with some roller skating!
- And of course the girls have been working on badges of their choice: Vlogging, Interior Design, Aspirations and the Live Smart Skills Builder

We have been very fortunate that Victoria Rogers has been able to join us for the term, giving us 4 leaders and lots of opportunity to work with the girls in smaller groups.

Big Thanks to Victoria, Paula and Helen for all their support in making Guides such a success.

Guides are for Girls age 10 to 14 years and we have space for a few more. If your daughter is interested in visiting to see what we do, do get in touch. We meet alternate Mondays during term time at our own Guide Hut on Soberton Recreation Ground between 6pm and 8pm. Our email is : SobertonNewtownGuides@gmail.com

We are now working on what adventures we can pack into the spring term.

Merry Christmas everyone

Caroline Rogers

Unit Leader for Soberton & Newtown Guides

Christmas Wreath Workshops The Guide Hut, Heath Road, Soberton Heath



Friday, December 5th,
2-4pm
OR
7.30pm-late



Tickets - £30 including refreshments

Join us for a festive, fun-filled wreath making session at the Guide Hut!
Enjoy a cosy afternoon (or evening) sipping tea or a glass of fizz and indulging in a mince pie while you craft your very own beautiful Christmas wreath.
All materials and festive decorations are provided – just bring your creativity and Christmas cheer!

Spaces are limited, so book early to avoid disappointment.

To reserve your place, email: mandy.haggard@hotmail.com



The Guide Hut Needs You!



Have you ever thought you'd like to get involved in village life – but you're not sure how? Recent research has evidenced that volunteering improves mental health and well-being. So, this could be your opportunity to get involved, improve your well-being and make the existing Guide Hut Committee Members very happy!

We're looking for enthusiastic people to join the Guide Hut Committee – we meet about 4 times a year and we organise 2-3 fund-raising events including things like Christmas Wreath Workshops, Beetle Drives and Afternoon Teas. The Hut is used by the Brownies and Guides plus it's the base for Children's Week and Barn Church. The Hut is also hired out for parties and as a rehearsal space for local bands. It honestly isn't a huge commitment, but the more people we have on board, the more we can share the load! We are particularly looking for someone who might be willing to manage our bookings (there aren't loads – honest!).

As well as fund-raising, we're responsible for looking after the maintenance and upkeep of the Hut. You don't have to be a Girl Guider to be involved – the Guide Hut is used by the whole community.

So, if you'd like to give something back to the universe, we'd love to hear from you!
To find out more drop Caroline Barfoot an email on guidehutsoberton@gmail.com.





**PLEASE COME WITH YOUR
FRIENDS TO OUR MACMILLAN
COFFEE MORNING**

**TO BE HELD AT ROOKESBURY VILLAGE
HALL ON FRIDAY 27TH FEBRUARY 2026
FROM 10.30 TO 12.30**

**COFFEE, TEA, SAVOURIES, BISCUITS AND CAKES.
CAKES FOR SALE.**

**PLEASE SUPPORT THIS
FANTASTIC CHARITY!**

A Meet & Eat Initiative!

Children's Week 2026



*Have you ever thought about
helping at Children's Week?*

*Do you help every year and can't wait for Children's
Week 2026?*

*Please come and join us for our first 2026 planning
meeting on Wednesday 28th January, at 7.30 pm in
the Guide Hut, Soberton Rec.*

We'd love to see you there!

sncweek@gmail.com

Soberton & Newtown Ladies' Group

In October Keston Williams gave a wonderful insight into the world of fresh food production and delivery. At the next meeting Steve Morton, from South East Cyber Crime Unit, was very informative about cybercrime and internet safety.

On Wednesday 3rd December, at 8pm in St Peter's Church Room, Sandra Glen and Pauline Walters will be demonstrating sustainable flower arranging. We will start the festive season with wine and nibbles.

The New Year's Party is on 10th January 2026 in Rookesbury Hall, Newtown. This is open to husbands, partners or a guest.

Liz Whales 01489 877712 lizwhales@aol.com

Helen Stranks 01489 878270 helen.stranks@btopenworld.com

SOBERTON FETE

YOUR VILLAGE NEEDS YOU!



Following the 'retirement' of Wendy Prangnell after 5 successful years as Chairperson of the Soberton Fete Committee, a successor is urgently sought. It's not just about chairing meetings; you will be pivotal to seeking volunteers, sponsorship and ensuring the event runs smoothly on the day. You need good leadership, interpersonal and organisational skills, a flair for innovation and getting results, and a keen sense of community spirit.

Whilst the position is unpaid, the satisfaction of bringing villagers and visitors together for a happy occasion and raising funds for your parish church, and local charities will reap rewards.

If you think you have the qualities required, please contact Sobertonfete@gmail.com.

WILL YOU TAKE UP THE CHALLENGE?

ROYAL BRITISH LEGION POPPY APPEAL 2025 NEWTOWN



The house-to-house collection in Newtown raised the magnificent total of **£864.32**.

A big thank you to Steve Cooper, Jenny and Andy Yates & grandchildren, Kerry Georges, Sarah and Andy Walton, Alison Blume and David & Georgia Banks, our collectors. Particular thanks and congratulations to Mrs Amy Randell and Newtown Soberton Infant School, who raised £153.08. Thank you to all in the village who supported this worthy cause.

A wonderful result. Thank you.

Sue Wells



Soberton and Newtown

**Join us for Messy Church
at Holy Trinity Church,
Church Road, PO17 6LJ**

**Friday 16th January 2026
3.30pm - 5.00pm**

**All children and
parents welcome!**

**Fun, creativity,
learning, hospitality**

Local Woodend Author Kevin Jackson unveils captivating new novel:

Myluv & Myluv

An exciting addition to the British crime genre that explores the complexities of love, loss, betrayal, and self-discovery.

Kevin has lived in our parish for many years and is pleased to announce the publication of his latest novel, *Myluv & Myluv*. This fictional, and adult themed story, promises to captivate readers with its unique blend of emotive storytelling, compelling characters, and thought-provoking themes. At its heart, *Myluv & Myluv* is a profound exploration of the intricacies of love in modern society. The gripping murder mystery delves deep into the emotional landscapes of the characters, inviting readers to reflect on the many forms love can take. With a distinctive voice and evocative prose, Jackson weaves a tale that resonates with anyone who has ever grappled with the complexities of the human heart.

Set in Cornwall and against the backdrop of contemporary Britain, the novel follows the intertwining lives of characters as they navigate personal challenges, societal expectations, and the search for genuine connection. Jackson's attention to detail and cultural authenticity bring the setting to life, making the story both relatable and deeply immersive. Those seeking a fresh, heartfelt journey through the highs and lows of human connection, *Myluv & Myluv* promises to be an unmissable read. Jackson has only been writing fiction for two years. His first novel *HUMANHAI* has had a screenplay written that awaits selection for production. *Myluv & Myluv* is his latest offering, building on a reputation for emotional depth and literary innovation. Readers can expect a novel that is as engaging as it is thought-provoking.

Myluv & Myluv is now available in bookshops nationwide and through major online retailers. Early 5* reviews have praised Jackson's masterful storytelling and the novel's unflinching honesty in portraying love's triumphs and tribulations.

Locally the book is for sale at Chesapeake Mill in Wickham for £8.99. Web: krjacksononline.com

POP IN FOR COFFEE AND CAKE

at ST PETER'S CHURCH ROOM, SOBERTON

POP IN FOR COFFEE & CAKE ON THE 2nd & 4th WEDNESDAY EACH MONTH
10am – noon

MEET FRIENDS, MAKE NEW FRIENDS AND HAVE A CHAT!



Equipping our children with the knowledge and skills to navigate life successfully.

Droxford Junior School is a beautiful rural school that is nestled into the hills of the South Downs National Park. The school has been in the village since the mid 1800's.

We are one of the only three Ambassador schools in the South Downs National Park and are proud to work closely with the Authority.

In February 2024, we proudly retained our outstanding judgement through the Ofsted process and in November 2025 we joined the University of Winchester Academy Trust family of schools opening the doors to further opportunities for all our pupils and staff.

This is an exciting time for our school and we value the strong community and business links we have developed. Our wonderful Friends Of Droxford team dedicate their time to excellent fundraising activities. Our Governors are knowledgeable and experienced in supporting and challenging the school to be better, as well as compliant to statutory obligations.

Come and join us!

If you are a parent of a child beginning their educational journey, moving into the area or simply seeking an outstanding education for your child, come and visit us and experience the unique qualities Droxford Junior School has to offer.

Are you a local business person who has skills, resources or experience to offer us? We would love to hear from you too! Be involved in our future plans - you will not be disappointed.

Please call 01489 877537 or email: adminoffice@droxford.hants.sch.uk





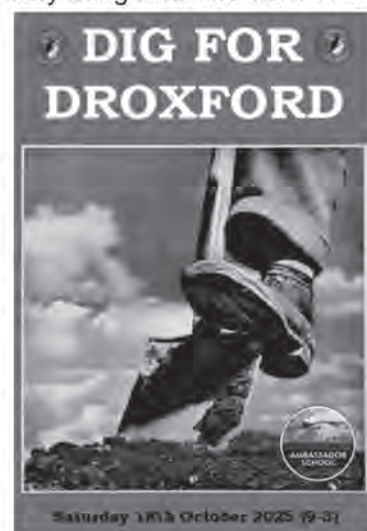
Just before the school broke up for the Autumn half-term, we held another Autumn Dig day. This is a day where parents and children come in to school and help us achieve many things we find hard to do throughout the year. On the day we completed many tasks to benefit the children and school.

- Support with any tasks on the school allotment
- Plant Spring bulbs – native bluebells (not Spanish bulbs), alliums, daffodils, crocuses and / or snowdrops.
- Tidy up and weeded the wildlife area and 'pond of ponds'
- Used hedge trimmers / strimmers / loppers to cut back unwanted brambles and hedges
- Tidied up areas of the planting at the front of school
- Cleared leaves and weeds around the site
- Cleared weeds in main plant beds in front and around school
- Weeded the shrubs and tree line on main field
- Mulched around the apple trees and shrubs
- Created BRAND NEW 'dead hedges'.
- Cleared the area outside my office ready for the Spring Day in April.
- Ate lots of pizza, salad, cake and biscuits!

A huge thank you to all the many parents and children who came in to help myself and Mr Parkin (site manager) on a glorious Autumn Saturday. You all brought tools, heavy machinery; a will and desire; community spirit and lots of fun and achieved so much.

I am so proud of what we all achieved and the school looks wonderful for it!

Matthew Dampier
Headteacher



KOREA ... a Newtown veterans visit

Annyeong haseyo (greetings with respect.)

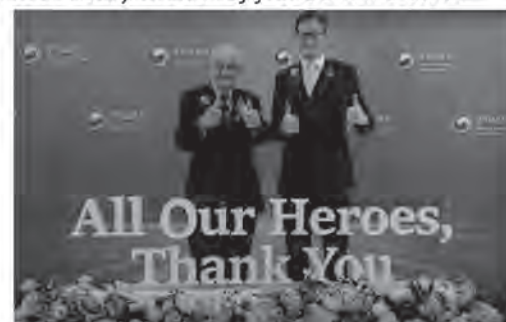
As a veteran of The Korean War I have just spent a week there (with a dozen other veterans from different countries) as a guest of the government and people. It was simply wonderful. When the war ended in 1953, millions of their people were dead and most of the cities were just rubble. The country was desolate, impoverished. Now, they are among the top economies of the world. With almost no natural resources, and less than half the size of the UK, they have prospered by hard work and brain power. Very tall buildings in the cities are dwarfed by high rise towers. The people are delightful, full of courtesy, kindness and respect. Theft is almost unknown (if you leave your wallet or iPhone in a public place it will still be there when you return.) We veterans were treated like heroes.

In a ten-seconds encounter with a girl about 15 years old she gave me an envelope addressed 'To our hero, with love and heartfelt gratitude.' Inside was a well-structured letter, beautifully hand-written, welcoming me to her family.

'Every moment of peace in my life exists because of your courage and love. You live in every breath of freedom we take.'
Such courtesy and gratitude make me feel humble.

I was able to lay poppies at two memorials where my shipmate was killed when our ship was bombed. On Remembrance Day I was given precedence over five ambassadors and was seated next to the government minister who hosted the whole affair. My modest speech of thanks was greeted with a standing ovation. The UK could learn a great deal from Korea.

Charles Wylie



Grandson Sam was Flag Lieutenant, ensuring that Charles was in the right place at the right time in the correct dress.

Pressing Needs



The Fabric Care Specialists

FREE

Collection & Delivery
Tuesday & Friday

25% off Duvet Cleaning

with Promo Code: S&N25

www.pressingneeds.co.uk

verity@pressingneeds.co.uk

- Laundry
- Dry Cleaning
- Ironing
- Shirt Service
- Bedding Laundry
- Duvet Laundry
- Curtain Cleaning

Duncan Rd, Park Gate, Southampton, SO31 1BD

01489 582095

MEON VALLEY
Mowers
SERVICE AND REPAIRS

Specialist in professional & domestic
mower & garden machinery

- Service & repairs
- Collection & delivery
- Competitive rates
- Rotary blades, cylinders & hedge cutter sharpening
- Visit our workshop



07783 937212 or 01489 878085

info@meonvalleymowers.co.uk



HAMBLEDON
CARS

PRIVATE TAXI SERVICE

Superior Air Conditioned Cars
8 Seater Minibus
Airports, Stations & Cruise Transfers
Theatre, Shopping, Business
& Local Travel

Steve & Tracey Eames

M: 07766 027 301

W: 02392 632 375

hambledon-cars@hotmail.co.uk
www.hambledoncars.co.uk

West Street Hambledon Hampshire



Mushroom Catering

**Bringing Masterchef
to the Meon Valley**

Masterchef contestant Gill Holland provides bespoke menus that give your special occasion the wow factor! Traditional British fare, a Thai feast or a Mediterranean mezze, canapés at a drinks party to full wedding packages. Whatever your event give Gill a call on the contact details below:

www.mushroom-club.co.uk

**West Down Cottage, Chalk Hill,
Soberton, SO32 3PH**

07879 696495, 01489 876741

MJM

Plumbing & Heating

36 years experience in the plumbing & heating industry

- Natural gas, L.P.G and oil boilers installed
- Oil tanks installed & maintained
- Power flushing
- Full bathroom installations including wall & floor tiling
- Unvented hot water systems installed, serviced and maintained
- Grant Oil Boiler Approved Installer

NO
CALL OUT
CHARGE

**NOW OFFERING 0% finance on all
Vaillant boilers and products!** Call for details

Tel: **01329 507712** Mob: **07773 385946**
info@mjmplumbing.co.uk www.mjmplumbing.co.uk



Vaillant

GONE
GRANT - APPROVED INSTALLER
Reg No 14371

REGISTRATION
NUMBER
529990
gas safe

Based in Wickham

TJ

CHIMNEY SWEEPS

TEL: 02392 002872

MOB: 07950 145494

COMPETENT, CLEAN & RELIABLE

WWW.TJCHIMNEYSWEEPS.CO.UK

FULLY INSURED & REGISTERED WITH THE INSTITUTE OF
CHIMNEY SWEEPS.

SEE US ON CHECKATRADE.COM

Robert Crook Garden Maintenance

All general gardening work undertaken

Tel: 02392 258686

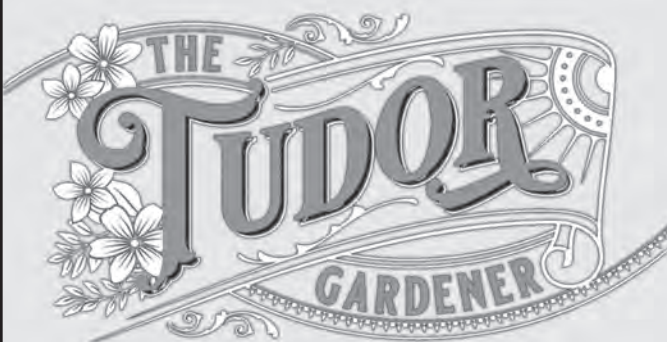
Mobile: 07929 092299

All seasons general garden maintenance

Mob: 07763 494006 Tel: 01489 878 598

tudorgardener@gmail.com

f @Tudorgardener



Specialising in:

- Hedge cutting & shrub shaping
- Garden design
- Fruit tree and rose pruning

 **RHS TRAINED**

SYCAMORE TREE SURGEONS

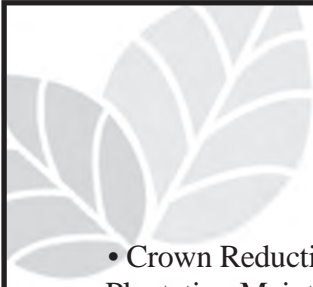
All aspects of tree work

**Pruning Surgery Felling Hedgecutting
Tree Stump Removal and Site Clearance
Approved contractors for local authorities**

FULLY INSURED

023 9223 0146

Mob: 07889 704449 David Farrington
30 YEARS EXPERIENCE



J. Gordon

Forestry & Arboriculture Ltd

- Crown Reduction/Re-shaping • Thinning/Dead Wooding • Skilled Tree Removal • Hedges
- Plantation Maintenance • Tree Planting • Fencing • Woodland Management • Stump Grinding



Professional Qualifications • Insured in all aspects of forestry and tree surgery

For a personal and caring service contact Joe Gordon

24 HOUR EMERGENCY CALL-OUT • FREE QUOTATIONS

Hambledon 023 9263 2418 Mobile 07712 808 081 www.treedocjoe.co.uk



**Taylors Garage
Droxford**
Hampshire SO32 3QL



Tel: 01489 877433

CAR and MOTORCYCLE MOTs

**Service and repair to cars
light commercials and horse trailers**

Air conditioning - service & repair

**Competitive prices on
tyres batteries and exhausts**

**Collection & delivery or loan car available
subject to availability**

BUY WITH CONFIDENCE
Trading Standards Approved Trader

To advertise please contact:

Kate Buttriss

kate.buttriss@gmail.com

07801 441998

CORE STRENGTH
FLEXIBILITY
FLAT STOMACH
JOINT MOBILITY
REDUCED STRESS
TONING
IMPROVED POSTURE

PILATES

PILATES

CARRIE MANDLEY RGN
PILATES INSTRUCTOR
PHONE 07854 413352



**SOLENT
DESIGN**

- Design
- Artwork
- Stationery
- Leaflets
- Flyers
- Brochures
- Booklets
- Newsletters
- Labels
- Postcards
- Folders
- Posters
- Banners
- Vinyl
- Exhibition Displays



**Tel: 01489 892344 • Email: sales@solentdesignstudio.com
www.solentdesignstudio.com**



ANDREW
SMYTH

Your local
HANDYMAN
DECORATING SERVICES

General Home Maintenance
Painting & Decorating
Carpentry & Fencing
Plumbing & Electrical
Domestic & Commercial
AND MUCH MORE...

07909 253681

andrew.j.smyth65@gmail.com



AndrewSmythHandyman

Wickham Fisheries

Your local Take Away
A wide variety of food

Gluten-free chips available everyday
Gluten free menu for other products
available every day (call and place your
order half an hour before collection)

Find all opening information and our menu
on Facebook – Wickham Fisheries

The Square
Wickham
PO17 5JQ
Tel 01329 832394



Local & Award Winning Luxury Self-Catering

- Ideal for family gatherings, celebrate here!
- Indoor heated pool and jacuzzi with hoist, sauna & steam room
- Hot tubs, en-suite bedrooms, wood burners
- Dog friendly, enclosed gardens, accessible
- Country views, EV charging points, free WiFi

WALLOPS WOOD COTTAGES
wallopswoodcottages.co.uk

GRENVILLE AT WALLOPS WOOD
grenvilleatwallopswood.co.uk

01489 878888

unwind@wallopswoodcottages.co.uk

Book with confidence and unwind with us

RICHARD STEEL & PARTNERS

THE FAMILY OWNED
FUNERAL DIRECTORS



RICHARD
STEEL
& PARTNERS
THE FAMILY OWNED
FUNERAL DIRECTORS
Proudly serving
Bishop's Waltham
and the Meon Valley
for four generations
Incorporating
Nigel Chamberlain
& Partners

Incorporating
Nigel Chamberlain
& Partners for
over 30 years



www.steelsfuneral.co.uk

BISHOP'S WALTHAM
The Gate House, Victoria Road,
Bishop's Waltham, SO32 1DJ
01489 892640

WINCHESTER
Alderman House, 12-14 City Road,
Winchester, SO23 8SD
01962 862333

Available 24 Hours

B.G. Property Maintenance

EST 1974

Internal and External Painting &
Decorating

Roof Repairs – Gutter Maintenance

Pointing – Brickwork & Plastering
Repairs

Glazing – Tiling – Paving – Carpentry

CLINT: 07836 620844

BOB: 07971 551513

Email: rgoble717@btinternet.com

FULLY INSURED
FREE QUOTES

BOWMAN

ALES LTD.

TRY OUR AWARD WINNING ALES



Our beers are
available in
bottles,
bags-in-boxes or
casks, all direct
from the brewery



01489 878 110
info@bowman-ales.com www.bowman-ales.com



Household and Business storage

02392 384 888

BARN-STORE.CO.UK

Offwell Farm, Southwick, Fareham, PO17 6DX

Hurricane Farm



Our Services:

- Mobile educational farm
- Incubator hire
- Breeders of pedigree Tamworth and Gloucestershire old spots
- Breeder of rare breed poultry and garden hens
- Supplier of quality pork

01489 878218 - 07876244146

LOCAL FARRIER

(Soberton Based)

David Povey Dip WCF

For:

Hot & Cold Shoeing
Remedial Shoeing

Established 1985

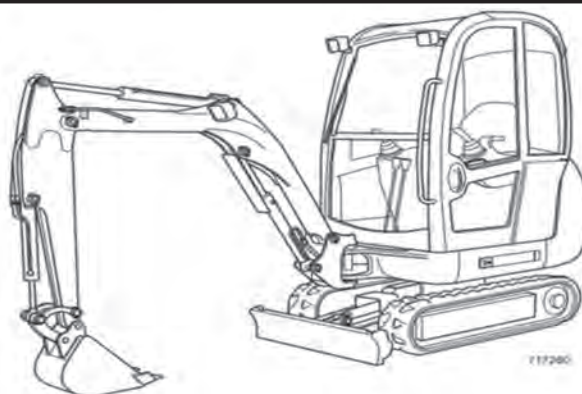
01489 878218



KS Groundworks

Local General Builders & Ground Maintenance, Hardscaping, Drives, Slabs, etc.

Over 30 years experience.



Tel: 07801 141517 Email: kym.slater@gmail.com



South Downs Funeral Service
Funeral Directors & Memorial Consultants

Our Wickham Funeral Home Is Moving

- Not far away, just across the road!



We are pleased to announce we have moved our Wickham Funeral Home to Thorn Cottage in The Square, quite literally a few yards away from our previous office.

Thorn Cottage is located next to The Old Tea House, Café, Bistro and Wine Bar.

After an extensive refurbishment of the building we are making plans to offer a full stonemasonry and counselling service.

We look forward to seeing you all, whether it is for care and support, or merely a chat to put the world to rights!

Your Local, Independent & Family Owned Funeral Homes of Denmead, Wickham & Clanfield

Our Clanfield Funeral Home

43 Drift Road, Clanfield PO8 0JS

Tel: 02392 570239

clanfield@southdownsfuneralservice.com

Our Denmead Funeral Home

The Old Post Office House, Hambledon Road,

Denmead PO7 6NN | **Tel: 02392 231567**

care@southdownsfuneralservice.com

OUR NEW WICKHAM ADDRESS

Thorn Cottage, The Square, Wickham, Fareham,

Hants PO17 5JT | **Tel: 01329 833920**

wickham@southdownsfuneralservice.com



Gold Charter Funeral Plans
24 hour, local and personal service
Floristry Service | Stonemasonry service
No deposits required
Fully accredited and regulated member of SAIF



CHAMBERLAINS

Family Solicitors

We can help you with a wide range of legal services including Residential Conveyancing, Commercial Property, Probate, Wills and Lasting Powers of Attorney

RED LION STREET (OFF HIGH STREET), BISHOPS WALTHAM

TEL: 01489 896141

info@chamberlainslaw.co.uk



LANDSCAPE & GROUND WORKS Ltd

Free Estimates - Quality Work - Competitive Prices

**Brick Laying • Block Paving • Patios
Concreting • Drainage • Extensions
Garages • Decking • Fencing • Turfing**

All other aspects of Hard and Soft Landscaping and Maintenance

KEVIN HALL 07808 496004

Tel: 01329 832169 Email: lbhkevinhall@gmail.com





PIMP MY Paddock

Paddock Maintenance

We offer a complete & professional paddock maintenance service

Located near Bishops Waltham, covering all surrounding areas.

Paddock, field & garden work is carried out using a quad bike, ensuring easy access to small & large areas with no heavy tyre marks.

Paddock Maintenance

Topping

Fertilising

Spraying

Springtyning

Harrowing

Hedge Cutting

Fencing & Gate Repairs

Log Splitting & Chipping

Full Public Liability Insurance

Phil Stratten 07799 118 022

mail@pimpmypaddock.com

www.pimpmypaddock.com



APARTMENTS FOR HIRE



Luxury One bedroom

We are offering this luxury apartments in Gosport. Fully furnished and equipped. High speed Internet.

ALL BILLS ARE INCLUDED

NO DEPOSIT, NO FIXED CONTRACT, NO MINIMUM OR MAXIMUM STAY.

IDEAL FOR:

Accommodation for business contracts.

Insurance placement. Long term guests.

While house works are on going on. Change of personal circumstances. In between house moves.



For more information of pricing

CONTACT: Ben 07973668539

StorAway

Your local choice for storage



Secure Storage for Classic Cars, Archived Documents and Personal Property. Long or short term storage options available.

**For ALL your storage needs
Contact StorAway on 01489 877988
or www.storaway.co.uk**

G. RIXON LTD.

ELECTRICAL PLUMBING AND HEATING ENGINEERS



01329 834600

enquiries@g-rixon-ltd.co.uk

www.g-rixon-ltd.co.uk

We carry out small jobs such as attending to faulty light fittings and dripping taps, to larger jobs such as complete rewire and replacement bathrooms. We are disabled adaptation specialists and install level access showers and accessible kitchens.

G. RIXON LTD. Wymot Heath Road Soberton Hampshire SO32 3PQ

R & G GAMBLIN

Extension Alteration Renovation

Planning work

Bricklaying.
Civil Engineering.
UPVC Windows & Doors.
Plastic Fascia & Soffit.
Concrete.
Loft Conversion.
Roofing Pitch & Flat.
Painting.
Conservatories.

Digger Hire.
Drainage.
Fencing.
Plastering.
Driveways.
Plumbing.
Garages.
Carpentry.
Electrics.

For Free Estimates please phone
Rob 01489 - 891801



SAFER CHIMNEYS

Member of National Association of Chimney Sweeps
NACS Certificates Issued.

"Highly Recommended" Local Chimney Sweep

**Power Sweeping, Traditional Brushes,
Chimney Camera Surveys
Stoves, Open fires, Range Cookers**

Less waiting time – 2 qualified sweeps

023 9247 6458 or 07733 343530

or 07847 466281

david@saferchimneys.co.uk

Proud members of
Checkatrade.com
Where reputation matters

www.saferchimneys.co.uk



**ICAEW
CHARTERED
ACCOUNTANTS**

Chartered Accountants
& Registered Auditors

**LOCAL INDEPENDENT ACCOUNTANTS AND
TAXATION ADVISORS**

FREE INITIAL CONSULTATION

Full range of accountancy, auditing and taxation services

Business start up advice

Book-keeping and Payroll Services

Self-Assessment Returns

Detailed Fixed Cost Quotes

Visits to your Premises

Avalon House, Waltham Business Park,
Brickyard Road, Swanmore, Southampton,
SO32 2SA

Tel: 01489 896996 Fax: 01489 895255

Email: enquiries@butlerco-bw.co.uk

Website: www.butlerco-bw.co.uk

TREE SERVICES

RESIDENTIAL & COMMERCIAL
HAMPSHIRE & SURROUNDING AREA

FOR MORE INFORMATION
www.wgstreeservices.co.uk

info@wgstreeservices.co.uk

or

CALL 07810 044 420



BULK BAGS

HARDWOOD | SOFTWOOD | KINDLING
FREE LOCAL DELIVERY

CALL 07810 044420
or

ORDER SECURELY ONLINE
www.wgskindling.co.uk

FOLLOW US



**Strength,
flexibility
and
balance**



**BIRCH TREE
YOGA**

Offering a range of
classes for all levels in a
woodland setting

birchtreeyoga.co.uk
07776238904



Tudor
PEST CONTROL

Mandy Haggart BSc.
07307 167 244

info@tudorpestcontrol.co.uk
www.tudorpestcontrol.co.uk



Easy Clean Services

Contact Us Now!

Tel: 01489 896 903

CESSPIT / SEPTIC TANK EMPTYING

TANK EMPTYING

- Cesspits
- Septic Tanks
- Interceptors
- Grease Traps
- Treatment plants
- Pump Stations



SERVICING

- All Treatment Plants
- Pump Sets
- Pumping Stations
- Water Pumps

PUMP and PARTS

- Air Blowers - All Makes
- Submersible pumps
- Spares and accessories
- Shop online or collect

DRAINAGE SERVICES

- Root Cutting
- CCTV Surveys
- Blocked Drains (Jetting/Rodding)

info@easycleanservices.co.uk

www.easycleanservices.co.uk

D.J. SCOTT
GARDEN MACHINERY

SALES & REPAIRS

Wheely Down Garages
Warnford, Nr. Southampton
Hampshire SO32 3LG

Telephone/Fax: 01730 829207

www.dj-scott.com

WINDOWS CLEANED TODAY

TRY OUR OTHER SERVICES

- Windows
- Gutters
- Fascia's & soffits
- Conservatories
- Roofs & Render
- Paving
- Bird proofing (chimneys & solar panels)

DM
EXTERIOR CLEANING
SERVICES

07815 698 140

bacs



GEMMA WILLIAMS
PRIVATE TRAVEL

Gemma Williams Private Travel offers a truly personalised service creating unforgettable tailor-made trips around the globe. With over 15 years' experience within the travel industry at some of the UK's leading tour operators. I'll make your travel planning and trip hassle free with a personalised and professional service.

Beach Holidays, Safaris, Adventure, Family Holidays, Cruises, Private Villas, Honeymoons, City Breaks, UK Staycations and much more.

As a Soberton resident I am happy to meet you in your home, at a time convenient to you.

GEMMA WILLIAMS

PRIVATE TRAVEL

WhatsApp / Tel: 07968 634556

www.gwprivatetravel.com

Gemma@360privatetravel.com

All Holidays are ATOL Protected



LOGS



Locally sourced, barn
stored, seasoned
hardwood logs

Delivered locally for free in bulk
bags or loose loads.

Charges may apply for long distance deliveries

For enquiries contact Charlie

Email: hambledonlogs@gmail.com

Tel: 07788907334

DROXFORD ANTIQUES

The Old Bakery, High Street, Droxford SO32 3PA

01489 878800 mark@droxfordantiques.co.uk

Established for over 40 years.

Still buying and selling antiques of all descriptions, valuations and probate service.

We repair, restore and polish in our own workshops.

CURTAIN MAKING & ALTERATIONS

Stockists of Kate Forman, Vanessa Arbuthnott, Ada & Ina

We offer a full service from measuring to making beautiful hand sewn curtains, blinds and pelmets especially for you.

Please telephone Mark or Mary for free, professional and confidential help and advice.



THE JOINERS SHOP

Period Joinery of Every Description

Conservation Approved
Double Glazed
Box Sash Windows

(Genuine) Handmade Kitchens

Tel: 02392 814780
enquiries@thejoinershop.co.uk
www.thejoinershop.co.uk



Associate Member of the Hampshire
Buildings Preservation Trust Ltd

Associated Trades



WHITE ROSE PLUMBING

Russell Beaumont

Free quotation
No call out charge
No job too small
Family run local business
24 hour emergency service

Tel: **01489 893419** Mobile: **07843 586366**
Email: whiteroseplumb@googlemail.com

LANDMARK DESIGN



TIMELESS. BESPOKE. CRAFTED ARCHITECTURE
extension & new build design

www.landmark-design.co.uk
t: 01489 352 193

The Old Post Office, Houchin Street
Bishops Waltham, SO32 1AR

CLEAN, PRECISE AND POLITE



Interior & exterior painting
Plastering and wall repairs
Doors, woodwork & more.

Local sole trader • Reliable
DBS checked • Free Quotations



☎ **07508 120757**

www.yugopainting.com

FAREHAM Creek VETS

32 East Street, Fareham PO16 0BY
www.farehamcreekvets.co.uk
Tel: 01329 280412

Local, independent small animal practice
Friendly, dedicated care for you and your pet
See the same vet at each visit
Close to Fareham town centre • Parking on site
24 Hours Emergency Service

M & S LOCKE & SON LTD

PLASTERING & CERAMIC TILING CONTRACTORS

Specialising in:

- All aspects of plastering
- All aspects of tiling
(inc. porcelain & stone interior/exterior)
- Full bathroom refurbishments

Family run business with over 30 years experience, we offer a reliable, friendly, and quality service.

**For a free quotation/advice please call Dean on
Mobile: 07712 894119/Home: 01489 877199**



HAMBLEDON GARDEN MACHINERY

All aspects of garden machinery
repairs and servicing, including
small plant & agricultural tractors
Delivery and collection available

Get in touch
☎ 07788 907334



CRAMER BESPOKE

CABINETRY | KITCHENS | FURNITURE

T: 02392 632222 M: 07805 040464
josh@cramerbespoke.com

*Why not read our glowing reviews from some
of the Meon Valley's most fabulous residents?*

www.cramerbespoke.com



Oliver Chimney Sweep



Experienced member of the Guild of Master Sweepers.

Insurance approved certificates issued with every sweep.

Professional, clean brush and vac system.

02392 787967

Email: info@oliver-chimney-sweeps.co.uk



CARTERS

GARDEN MACHINERY
SINCE 1921

Celebrating 100
Years

EGO
HAYTER
MAKERS OF THE FIRST MOWER

Mountfield
TIGER

STIHL Husqvarna



Machinery Sales | Service | Repairs | Hire

- Robotic Mower Installers
- Free Site Surveys & Advice
- Battery Machine Specialists
- Lawnmowers & Ride-Ons
- Hedge & Brush Cutters
- Chainsaws & Safety Clothing
- Leaf & Litter Blow-Vacs

Call us on: 01489 575242
Visit Our Store or Buy Online

www.cartersgardenmachinery.com



Duncan Road, Swanwick, Southampton, SO31 1BD. (Opposite Swanwick Railway Station. Follow the signs to the station from Park Gate.)



MARK OLIVER Plumbing & Heating

INDEPENDENT FAMILY BUSINESS - ESTABLISHED 2002

All Domestic Plumbing Undertaken

Fully Insured & Qualified Plumbers
Covering Hampshire

Oil Boiler Heating Specialist

Oil Boiler Installation and Servicing

Approved Grant Boiler Installer

12 Month Guarantee on all Installations

BLUE LIGHT CARD & SENIOR CITIZEN DISCOUNT AVAILABLE

Office: 02380 981779

Mobile: 07743 386540

email: moliverplumbing34@gmail.com

www.moliverplumbing.co.uk



GATES HOUSE GARDENS

Bespoke, hand crafted and tailor made just for you

- Alfresco living spaces
- Summer houses
- Oak frames
- Glass roofs
- Gazebos
- Garages
- Offices
- Decking
- Patios
- Driveways
- Electric gates
- Sewage treatment plants
- Woven Steel - Fencing, Screen, Planters, Edging
- Design ideas and solutions



www.gateshousegardens.com

07885 663 829 or email

jone@gateshousegardens.com

Soberton Heath, Hampshire

REQUEST A QUOTE TODAY

Computer Problems Solved

A qualified & experienced Computer Engineer who can efficiently solve your home and business computer needs.



For a friendly, no obligation quote call:

Chris Guénier: 01489 890738 or 07962 641796



<http://www.cps-ltd.org.uk>

info@computerproblemssolvedltd.co.uk

Mrs G's Pilates

- Enhanced core strength
- Improved flexibility
- Greater postural control



- Freedom of movement
- Self awareness
- Sense of well being

Tuesday Rooksbury Hall 0915-1015. **Wednesday** Meon Hall 0915-1015, Rooksbury Hall 1830-1930.

Thursday Denmead 0915-1015, Knowle 1100-1200, Rooksbury Hall 1830-1930

Friday Droxford 0915-1015 & 1030-1130

Contact Charlotte :07776221077 or charlotte@mrsgpsilates.co.uk

North ProBuild Ltd.

**General building, Extensions,
Refurbishments, Kitchens,
Bathrooms, Landscaping,
Driveways, Patios, Decking,
Equine Yards and Stables**

**Portfolio & References available,
helpful friendly reliable advice.**

Local Family run business in Soberton.

Please contact Darren

- ♦ darrennorth75@gmail.com
- ♦ 07946 106431
- ♦ 01329 833997



arb
Architects
Registration
Board

dwell design
ltd

A RIBA CHARTERED PRACTICE



Listed buildings



Bespoke residences



Conversions

"Anthony is a fantastic architect, who is
passionate about what he does!"



PASSIONATE ABOUT SUSTAINABLE LIVING

01329 717515 | enquiries@dwell-design.co.uk

Leading the way in providing an AFFORDABLE PROFESSIONAL service

WESTMINSTER LAW

Wills ~ Estate Planning ~ Probate



**If you are over 60 it will cost you only
£95* for us to prepare your Will.
We are also Lasting Power of Attorney
specialists - only £95* each LPA if
instructed during the Will appointment.
Our prices include VAT, home visits,
and Inheritance Tax advice.***

**Call us now for a no obligation chat on
02392 706980**

www.westminster-law.co.uk email: info@westminster-law.co.uk

Westminster Law Ltd, Reg. Office: Wellesley House, 204 London Road, Waterlooville PO7 7AN

*These very special rates are only available if you are over 60 years old. Minimum spend for a free home visit is £95.
Our normal price for a standard single Will is £150, or £250 for a couple.

MATT & MORGANA WELCOME YOU TO THE BOLD FORESTER IN SOBERTON HEATH!



We are thrilled to have recently taken over this beloved pub and are excited to embark on a journey of restoring its charm through essential maintenance and improvements.

Morgana, who grew up in this beautiful village, has spent a significant part of her life working at The Bold Forester, and it holds a special place in her heart. To us, it's always been more than just a place to grab a drink—it's a community gathering spot for friends, families, and neighbours. We cherish the countless memories of laughter, celebrations, and the strong community spirit that have filled its walls over the years.

Our vision is to bring this cherished pub back to its former glory, transforming it into a vibrant hub for the community. We plan to host events, support local businesses, and foster greater community engagement. We're working closely with our Executive Chef, Martin Dawkins, and his team to reimagine the restaurant, using fresh, locally-sourced seasonal produce, so our menus will evolve throughout the year.

Together, we can breathe new life into The Bold Forester and create a place where new memories are made. We eagerly look forward to welcoming you all and hearing your thoughts on how we can once again make this pub the cornerstone of our community once again.

Tel: 01329 832620
office@rusticenterprises.co.uk



Warm Regards,
Matt & Morgana



Journeys of faith for discerning Christian travellers

£50 off*
any Fellowship
Tour for
all readers!

For over 40 years we've arranged pilgrimages for churches. In the last decade, we've developed our Fellowship Tours – designed for individual travellers who want to deepen their faith, explore places of Christian significance and share the journey with like-minded companions.

On a McCabe Fellowship Tour, you'll enjoy:

- ✚ Journeys to key biblical sites and Christian heritage locations
- ✚ Encounters with local food, art, history and people
- ✚ Daily worship and reflection led by an experienced McCabe leader
- ✚ Fellowship with other like-minded travellers

More than just travel, McCabe Fellowship Tours offer opportunities to grow, reflect and connect in some of the most inspiring places on earth.

*£50 off per person on any new booking for a McCabe Fellowship Tour made by 31st December 2025. Quote code 'PARISH50' when booking. Offer valid for new bookings only, cannot be combined with other discounts and is not transferable or redeemable for cash.

For more information:

 www.mccabe-travel.co.uk
 **01252 226133**



McCabe
PILGRIMAGES

SOBERTON STORES

QUALITY PRODUCE. SERVING OUR COMMUNITY

Soberton Welcomes New Village Store at The Bold Forester.

Soberton, Hampshire - The heart of Soberton is beating a little stronger this month as residents gathered to celebrate the grand opening of Soberton Stores, a brand-new community shop based at The Bold Forester pub.

The opening was marked with a lively village BBQ, drawing in families, friends, and neighbours eager to explore the store's offering. From fresh local produce and everyday essentials to artisan goods, the shop aims to provide both convenience and a boost to the region's small suppliers.

For many villagers, the arrival of Soberton Stores represents more than just a place to shop. It's a return of a cherished amenity, ensuring residents can pick up what they need without travelling further afield.

"It's fantastic to see Soberton Stores up and running," said one local visitor at the launch event. "It feels like the community has gained a new hub - not just a shop, but a place to meet, connect, and support local businesses."

Housed within the historic Bold Forester pub, the store blends tradition with practicality. The pub itself has long been a focal point in the village, and the addition of a store strengthens its role as a centrepiece of community life.

The launch event showcased the store's range, with a warm welcome from staff, tastings of local produce, and family-friendly activities. Early feedback has been overwhelmingly positive, with villagers praising both the convenience and the community spirit behind the venture.

As Soberton Stores settles into daily life, it's expected to play a vital role in keeping the village connected and self-sufficient. Whether it's popping in for milk, picking up fresh bread, or discovering Hampshire-made treats, the shop looks set to become a firm favourite among residents.



Forester Road,
Southampton,
SO32 3QG



Homemade
Produce

Warm
Welcome

Convenient

Community
Focused

Local Produce

Friendly Staff

SDS ROOFING SERVICES LTD

Celebrating



As a Limited company



Lead Work • Tiling • Shingles • Slates • High Performance Torch on Felt Systems
• Green Roofs • Single Ply Membranes • New Builds • Repairs



www.sdsroofingservices.co.uk



01489 788 577



info@sdsroofingservices.co.uk



MARK & JUNE MASON

Husband and wife high quality painters and decorators. Period to modern properties, one room to a whole building. We work around your requirements.

www.masonspaint.co.uk

Phone 01329 235847

Mobile 07973 162397



All Types of Carpentry, Joinery & Building Work Undertaken

Kitchens, Bathrooms, Windows & Doors (wood & U.P.V.C.)

Renovations & Repairs, Wardrobes & Cupboards,
Bespoke Joinery, Furniture Restoration, Painting & Decorating.

Professionally Qualified & Insured
30+ Years of Local Experience

M: 07875 557961 T: 01489 895890

E: leeacooper@talktalk.net

W: www.leecoopercarpentry.co.uk 

WELLER PATRICK

SOBERTON AND MEON VALLEY PROPERTY EXPERTS

Experienced local team with
detailed knowledge of the area.

01489 893555

www.wellerpatrick.com

info@wellerpatrick.co.uk

Ray Chandler STATION GARAGE FAREHAM LTD

SERVICING, MECHANICAL & BODY REPAIRS,
WELDING, M.O.T. TESTING,
BREAKDOWN SERVICE

Tel: **01329 238451**

www.stationgaragefareham.co.uk

Unit 1, The Avenue, Fareham, Hants PO14 1NP

Sweeps of all types of appliances carried out
Stove maintenance and repairs carried out
Bird guards / Caps supplied and fitted
CCTV inspections carried out
Fully insured
Certificates issued

Neil Jarrett 0751 0304 888

neil@sunrisechimneysweeps.co.uk

www.sunrisechimneysweeps.co.uk



THE WHITE LION

BED & BREAKFAST

BEER GARDEN,
FUNCTIONS, HOME
COOKING AND
LOCAL BEERS

TELEPHONE: 01489 877346

INFO@THEWHITELIONSOBERTON.CO.UK
WWW.THEWHITELIONSOBERTON.COM



STUDIO 6 DESIGN & PRINT

Business Cards & Letterheads • Leaflets & Flyers
Wedding Stationery • Funeral Orders of Service
Banners & Signage • Booklets & Brochures
Personal Stationery • Labels, Rubber Stamps & much more!

www.studio-6.co.uk

We have new premises!

PLEASE CONTACT US VIA PHONE OR E-MAIL

01329 832933 • print@studio-6.co.uk

EXPERT TAX ADVICE WITH A HUMAN FACE FOR THE MEON VALLEY

WATCHING OUT FOR THE NEXT GENERATION

Is IHT a factor in making my Will? Is a Family Trust a good idea?

PROPERTY OR WORK OVERSEAS

How does it affect my tax if I live, work or have property abroad?

FOR ENTREPRENEURS

Am I the only one wondering whether it's worth all the aggro?

PERSONAL TAX

What is the best way to order my tax affairs, in full compliance with the law?

SELLING MY BUSINESS

How much tax will I pay? What is my business worth?

Nicholas Ridge
TAX EXPERTISE

Oakleaf, Ludwells Lane, Waltham Chase, Southampton, SO32 2NP

t: 01489 899102 e: nicholas@nicholasridgecta.co.uk

www.nicholasridgecta.co.uk

CARPET & UPHOLSTERY CLEANING HIGH QUALITY & AFFORDABLE

- Independent Family Run & Owned Business - Est 2003
- Carpets, Leather, Rug & Curtain Cleaning
- Approved by Trading Standards
- Honest & Competitive Pricing
- Rapid Drying Times
- Discounts for Whole Houses

Call us today on:

M: 07436 266078

www.elliottcarpetcare.co.uk

'We have used Elliott Carpet Care for many years and have never ever been disappointed. Carpets and sofas come up like new. The attention to detail and care taken is extraordinary'.



All aspects of Carpentry & Building work undertaken

- Extensions • Alterations • Refurbishments
- New Builds • Landscaping

Tel: 02392 632037 Mob: 07885 283036

jay.tucker16@yahoo.co.uk

Fully qualified and insured



The Perfect Space for Meetings or Committees

HOST YOUR NEXT MEETING OR
PRESENTATION IN A DISCREET AND
PRIVATE AREA.

RURAL LOCATION NEAR HAMBLETON.

- Seating area for 6 to 8 people.
- Parking up to 4 cars.
- Ultra Fast Internet.
- Coffee, tea, cold drinks facility.
- WC.

ENQUIRIES:

Contact Ben **07973668539**
by text or WhatsApp

Discount offered for repeat or regular bookings

FOR ALL YOUR DRY CLEANING AND LAUNDRY NEEDS

Duvets Laundered
Curtain Cleaning & Alterations
Tailor Repairs & Alterations
Wedding Dresses Cleaned & Boxed
Specialist Rug Cleaning Service



Laundry Service
Carpet Cleaning Machine Hire
Waxed Garments Cleaned & Re-Waxed
Pillows Cleaned & Recovered
Suede & Leather Cleaning

4 Merlin Mews, Bishop's Waltham. Tel: 01489 894421 • Agent: Meonstoke Post Office

www.bryantscleaners.co.uk

What's on

Month	Date/day	Event / group	Time	Details
December	2 nd	Stitch & Chatter	14:00	Page 51
	2 nd and 16 th	U3A	14:00	Page 40
	3 rd	S&N Ladies Group	20:00	Page 14
	4 th	BW Photographic Society	19:30	Page 40
	5 th	Christmas Wreath Workshops	14:00/19:30	Page 13
	9 th	Wickham Society	19:30	Page 40
	10 th and 24 th	Pop in for coffee and cake at St Peter's	10:00	Page 16
	12 th	Meet&Eat Christmas Lunch	12:30	Page 51
	17 th	Segalula Songs for a Winter's Night	19:00	Page 10
	18 th	Christmas Carols and Cheer	18:30	Page 9
	22 nd	Christmas Craft Workshop	10:30	Page 11
	23 rd	Meon Valley Carers Group	14:00	Page 41
	24 th	Crib Service	18:00	Page 6
January	6 th	Stitch & Chatter	14:00	Page 51
	6 th and 20 th	U3A	14:00	Page 40
	8 th	Local History Society New Year Lunch	-	Page 10
	10 th	S&N Ladies Group New Years Party	-	Page 14
	12 th	RBL	19:00	Page 39
	12 th	COPY DATE FOR FEBRUARY / MARCH	17:00	-
	13 th	BW Festival Panto	13:30	Page 42
	14 th and 28 th	Pop in for coffee and cake at St Peter's	10:00	Page 16
	16 th	Messy Church!	15:30	Page 15
	21 st	Good Neighbours/MV Heartstart life saving	-	Page 7
	27 th	Meon Valley Carers Group	14:00	Page 41
Hold the date	27 th Feb	Macmillan Coffee Morning	10:30	Page 14
	9 th March	RBL	19:00	Page 39
	23 rd May	Newtown Church Fete 2026	14:00	Page 35

Regular meetings/ events	1 st Tuesday	Stitch & Chatter	14:00	Page 51
	1 st Wednesday	Soberton & Newtown Ladies' Group	20:00	Page 14
	2 nd /4 th Weds	Pop in for coffee and cake at St Peter's	10:00	Page 16
	2 nd Thursday	Soberton & Newtown Local History Society	19:30	Page 10
	1 st /3 rd Tuesday	Meon Valley U3A	14:00	Page 40
	Last Friday	Meet&Eat	12:30	Page 51

Please note that some of the repeating events / groups may not meet over Christmas – please check.



Hold the date!

NEWTOWN CHURCH FETE 2026

Saturday 23rd May

Meonwood – 2pm

We look forward to seeing you there!

In your garden ... A Winter Wonderland

Although most attention this time of year is being focused on the upcoming event of Christmas, I am, due to being a resident of the outdoors, looking forward to something far more magical – sorry children.

In my opinion, there is nothing more magical than the light of winter, it tiptoes through the bare branches like a flickering candle and delicately illuminates the glistening frost upon the grass. Industrious spiders have cast their webs between fences, gates and flower stems in the hope of catching something, anything but it is still.



Indulgence over and time to talk about the actual components of what makes a winter garden. It is very tricky to have a garden that looks appealing or attractive in the winter months. There is very little colour from perennials or shrubs and most trees are bare to the bone so we must look beyond the superficial colours that catch our eye in the more fertile times of spring and summer and play with something far more 'sophisticated' which is structure.

This is when we start to look at purely the shapes that the plants give us. The different leaf types alone have a vast array of choice and when you start to combine these together there are limitless possibilities for a rich and varied tapestry.

When planning a border, most people will draw a plan or 'birds eye view' of the bed that they would like to fill but without drawing an elevation or 'person's eye view' you are missing out on what it would really look like.

I would always start with the largest elements first, if there is room – and there is always room – I would choose my tree(s). Even a deciduous tree can have winter interest, the shape of the branches and the texture of the trunk. A personal favourite is *Acer Griseum* or paper bark tree – its bark is a rich burgundy and looks like it is peeling off. A *Betula Jacquemontii* or Himalayan Silver Birch has a startling white trunk, ideal for complementing winter conditions.

The next step, I would look at shrubs, and the choice here is plentiful and can add that little bit of colour too. *Mahonia* will flower in the autumn, but the jagged leaves create drama throughout the year. A *Cotoneaster* will have berries for our winged friends and the delicate leaves hold the frost beautifully. In addition to these you have *Sarcococca* which produce small fragrant white flowers in winter and *Cornus* or Dogwood which has vibrant red to orange stems.

Amongst these, my three favourite perennials are *Echinops*, *Eryngium* and *Lunaria annua* (Honesty). Their bold flower heads not only hold their form throughout the depths of winter but also provide a little food and shelter for nature when it needs it most.

These are just a few ideas but if you need further inspiration to 'winterise' your garden, we are so fortunate to live close to one of Europe's largest, dedicated winter gardens: Sir Harold Hillier Gardens of Ampfield, Romsey.

The Tudor Gardener

Meet Gary — our Accredited Community Safety Officer

Gary is an Accredited Community Safety Officer (ACSO) serving Swanmore Parish Council and supporting the parishes of Soberton, Shedfield, Owslebury, and Whiteley Town Council. Accredited by Hampshire Police, he is empowered to require names and addresses in cases of anti-social behaviour, and to seize tobacco from under-16s and alcohol from under-18s.

Operating mainly on foot patrol, Gary plays an active and visible role in the community, building trust through daily engagement and early intervention. His approachable manner and consistent presence help deter nuisance behaviour and promote a sense of safety across the parishes. Working closely with local Police Community Support Officers and officers from Bishops Waltham Police Station, he ensures seamless communication between parish councils, residents, and Hampshire Constabulary.

Gary also collaborates regularly with Winchester City Council's Environmental Services, particularly the Fly Tipping Officer, Gary Brown. Together, they tackle environmental offences, strengthen reporting procedures, and coordinate responses to fly-tipping and related issues that impact local quality of life.

Known for his practical, community-first approach, Gary combines enforcement with education—whether advising young people about the consequences of anti-social behaviour, supporting residents with safety concerns, or assisting parish teams in addressing ongoing problems. His work reflects a strong belief that local visibility, partnership, and early action make the greatest difference in preventing escalation and maintaining safer neighbourhoods.



A Community Safety Update from Gary for December & January

As we head into the festive season, I'd like to wish everyone in **Soberton and Newtown** a safe and happy Christmas and New Year. December and January are full of opportunities to come together as a community, but they also bring darker evenings, colder weather, and a few extra things to be mindful of when it comes to safety.

Please take a moment to look out for neighbours, particularly anyone who may be elderly, isolated, or finding things a little harder at this time of year. A friendly check-in, a phone call, or even helping with shopping or clearing a path in icy weather can mean an awful lot.

Sadly, the festive period can also bring a rise in opportunist theft. Make sure gifts and deliveries aren't left in view, keep doors and sheds locked, and consider using timers for lights if you're away. If you see anything that doesn't seem right, report it or let me know.

When out and about, take extra care on rural lanes – they can be slippery and visibility drops quickly. Whether you're walking the dog, cycling, or driving, please make sure you can be seen and stay alert.

And while Christmas is a joyful time for many, it can be difficult for some. If you or someone you know needs support or just a chat, please don't hesitate to reach out. Looking out for one another is what makes Soberton and Newtown such special places to live.

Wishing you all a peaceful and safe start to 2026.

Gary – Accredited Community Safety Officer

Soberton & Newtown

Email: acsogary@swanmore-pc.gov.uk

Phone/WhatsApp: **07442 156124**

Local History ... Soberton's Secret Army

Soberton's Secret Army was a tiny part of a what is often referred to as Churchill's Secret Army. It was formed in the bleak days of 1940, when a German invasion of our country was a distinct possibility, with the objective to stay behind enemy lines and to do as much damage as they could. This earned them another nickname "the Stay Behinds".

These top secret auxiliary units were mainly recruited from the already existing Home Guard so the recruits had already received some training and the officer in command would have known his men. It was truly top secret as the recruits not only swore the usual oath but also one that they had to remain silent on the subject for thirty years. This delay meant that the general public were unaware of these units for at least three decades but now the Coleshill Auxiliary Research Team (CARTS) is very active and material has been made public.

Coleshill House in Oxfordshire became the headquarters and the training ground for the auxiliary army in sabotage and concealment techniques. They were taught to build bunkers, use explosives, knives and instructed in silent combat. In fact, they were virtually a suicide squad with a very short life expectancy, some sources quote 15 days. Church bells ringing, the warning of an enemy invasion, was the cue for them to go to their designated bunker and wait. Once the enemy had passed they were to do as much damage as possible to the enemy supply lines, ammunition stores etc.

Imagine some of the young Soberton men explaining their absences from home as it obviously differed from their Home Guard colleagues normal routine. Anne Horn told the Bishops Waltham Oral History Group that her father, F.J. Bettesworth said it was "a bit like the Home Guard but different".

Because it was so secret few records exist and they are very random. It is understood that there were ten groups in Hampshire and Group 5, **Soberton to BW**, consisted of patrols formed in Bishops Waltham, Droxford, Soberton A, Soberton B, Southwick, and 'Unallocated men Hampshire Groups'.

The HQ for Group 5 may well have been at Hill Crest, Ingolfeld Lane, the home of Mr. Welch and notes relating to the Southwick group list the following training grounds:- Chalk Pit, Soberton, weapon practice; Rookesbury Hall, unarmed combat; Hole Farm and Hipley Copse, explosives training while Goat House Hill Farm at Newtown, Shoot Hill and Wallops Wood were used as Exercise Locations. The patrols were thought to have been issued with the standard army weapons and equipment.

The names given for the Soberton A patrol and its operational base given as Huntbourn Woods suggest it was picked from the Newtown Home Guard, Soberton B, most likely formed from Soberton Home Guard. A few years after the end of the war children playing in Huntbourn Woods found the bunker and described it as built from corrugated iron. Inside were bunks and crusty tins of what was thought to be food. There was an escape tunnel that came out some distance away under a holly tree. It was already deteriorating at that time. The woods are now private property with no public access.

Occasional information gives clues as to who was part of each patrol so it is known that the Sergeant of the Soberton A patrol was, from Dec 1942-Dec 1944 Henry David Miles whose day job was as a chief inspector of Taxes. He was about forty and a Portsmouth man, His only apparent connection with Soberton was that he was married to Mr. Welch's daughter.

The other five members of Soberton A all joined in 1940. Charles William Ponton and his brother Harold Ernest had lived in the area since their father, a WWI naval officer, moved there about 1920. C. W married Doris Hoad of the Travellers Rest and that was his given address. H.E., a poultry farmer, was also married to a local girl and they lived at Rose Thicket, Hoe Gate.

Albert Clinch and Roy Giles were not local men. Albert, a Sussex man, was well known in Newtown as being 'the brickmaker' at the Lay family's Newtown brickworks. Normally it was a seasonal job but he may have had to stay in one place during wartime and his address is given as Nightingale Cottage, Hoe Gate. Roy Giles was living at Fir Tree cottage when his five year old son was admitted to Newtown School in 1938. Charles A Jones has been more difficult to trace as we have no birth date for him.

The Soberton B patrol's sergeant was Robert John Bettesworth, the Coal Merchant Manager at our local railway station. Bishops Waltham born Robert appears to have served in RASC during WWI. In 1939 he was living near the station but later moved to Hookers Dene in Selworth Lane where he lived for many years.

Four men were quickly recruited. James Colsen Knight was living at Soberton Towers School in 1939 and described as a gardener but ten years earlier when he married Dorothy Varndell at Meonstoke he was described as a motor driver. This seems a curious situation but his joining the unit shows that he was not opposed to fighting the enemy. His parents had moved to Moor Hill soon after WWI ended. William Harry Matthews (b 1909)

Remembering that there were many Matthews in Soberton and at least two Williams this appears to be Bill of West Street. Coleshill describe him as a lorry driver but it is thought that he worked for Childs the builders and undertakers. Bill was a verger at St. Peters and an expert at a quick change according to an informant, arriving at St Peters to dig the grave, then a quick change to formal clothes to carry the coffin and then another quick change before rushing back to work. Perhaps he was good at subterfuge.

Ronald Norman Nobes and John William Underwood were still teenagers when they volunteered. According to hearsay the three sons of Edward and Mabel Nobes of The Cabin, Soberton fought in the 1939-45 war so perhaps when R.N.N. left the Sob B patrol in 1942 he joined the army but so far no record of his service has been found. Jack Underwood was very much a local and assisted his father with his market garden. Later Jack married Molly Cleeve and, after a spell of living in Valley View they moved to Green Acres in Hambledon Lane.

A year later tractor driver William Underwood joined the "B" patrol. He was in his mid-twenties and most likely the William brought up by his grandparents at 'The Bungalow' on Cold Hill. However, grandfather William, a market gardener, died in 1925 and by 1939 he lived with his grandmother and her second husband Henry Davis.

Two other men joined the unit in 1942. The first was fifty year old George Hedley Bollen whose parents and grandparents had run the Newtown shop until its closure. (Wick House) George's father had seen military service in WWI but George's occupation as a council road worker may have given him exemption. The final known name was Alick Stephen Deadman of School Hill Cottage. Having been brought up in West Street and attending Soberton School Alick Stephen had become a farm carter.

Fortunately these men, and perhaps un-recorded others, were never called to action but we must acknowledge their bravery and their ability to keep a secret.



Droxford & District Branch

founded on 26th March 1920 as Comrades of the Great War



SANTA CLAUS WITH BBC'S PAN'S PEOPLE
ONBOARD HMS MINERVA AT MOMBASSA,
KENYA CHRISTMAS 1971 (ALONGSIDE HMS
TRIUMPH WITH HMS/M FINWHALE OUTBOARD)

Our President, Chairman and Branch members wish you all a very happy Christmas and New Year. Our programme for 2026 has now been published and includes four meetings with a speaker at which non-members are very welcome. The first of these is at 1900 on Monday 12th January when author and historian, Captain Peter Hore Royal Navy, will talk to us about his new biography on Admiral Sir Jock Slater GCB, LVO, DL. Many of you will know Sir Jock as our Branch's Emeritus President, long established local resident and former First Sea Lord. As a young lieutenant, he also commanded *HMS Soberton* whose ship's badge and bell are displayed in St Peter's Church. Supper will be available at £17.50 a head after the talk for those who book at robmunroscott@aol.com at least a week beforehand.

Our programme of meeting and events for 2026 are as follows (all on a Monday):

January 12th "*No Uncertain Sound*" – introducing the biography of Admiral Sir Jock Slater GCB by author and historian Captain Peter Hore, Royal Navy

March 9th "*Cyber- the new domain in today's armed forces*" by Major Hugh Frere-Cook, Army Intelligence Corps

May 11th "*In My Grandfather's Shadow*" by Angela Findlay, author and granddaughter of a *Wehrmacht* General in Nazi Germany.

September 7th "*Remotely Operated Aerial Systems – Battlefield drones in modern warfare*" by Colonel Ben Ingham, Royal Artillery

We will also be holding our annual Grand National Draw, Summer Drinks Party and a Trafalgar Night Dinner for members and their guests. The RBL Remembrance Sunday service will be held at St Peter's Church Soberton at 1050 on Sunday 8th November 2026 at which everybody will be especially welcome.



The RBL Droxford & District Branch is always looking for new members, both Service and civilian, to help keep remembrance alive and support our Servicemen and women, veterans and their families. For more information or to join us, please contact the Secretary – Cdr Rob Scott RN at robmunroscott@aol.com or 01489 877800. www.soberton.org/rblweb.



Hello again.

Meon Valley U3A is delighted to offer you once more lectures for December and January. We meet every first and third Tuesday at 2pm at the Wickham Community Centre during the lecture season. (until end of 2025).

On 2/12 Dr. John Watkins lectures on Fixing broken hearts - from Garlic to Gene therapy. John was a top cardiologist at QA hospital for many years.

For December 16th Glyn Edwards offers you his traditional Christmas Quiz. (hopefully not the same one). Doubtless there will be a bit of Christmas cheer to lubricate the meninges.

January 2026 brings on 6/1/26 Jenny Chase: Operation fortress: the drug story. Jenny will explain her family fight against drug addiction.

And on 20/1/26 David Gane: The Story of Life. Sounds enigmatic? Come and find out.

Also, from January 26 we change our venue to **Our Lady Queen of Apostles Church Hall at Martin Street Bishops Waltham SO32 1DN.**

This change was not the Committee's choice.

Everybody is welcome. Guests will get an especially warm welcome. (Guests pay £2 to defray speaker costs.) Tea and biscuits are provided after the talk, and we always have pre-loved books for charitable sale.

Do come along, please.

Lyndon (programme organiser)

Contact-07881991763

Or lyndonplmr@gmail.com

Web site-: southeast.u3asite.uk

Wickham Society Autumn Programme 2025 www.wickhamsociety.org.uk

9 December 2025 at 19:30 - A Magic Lantern Show

Victorian Humour with Alan Brindle. Revisit a time when magic lantern slides thrilled and amazed their audiences

A joint meeting with Wickham History Society

For more information visit our website or contact wendy.greenish@gmail.com or 01329 833583

Bishop's Waltham Photographic Society

For our last meeting of 2025, (4th December), the Society will welcome Janey Divine FRPS, an acclaimed local photographer known for her work in documentary photography. Janey will share her latest projects and discuss techniques and stories behind her images, offering valuable insights for photographers of all levels.

If you have recently acquired a new camera or want to re-kindle your hobby or even find out how to improve your skills using a camera phone, Bishop's Waltham Photographic Society will welcome you and help you with your photography. Why not come along to one of our meetings, (free of charge) as a taster.

We meet at St. Peter's Hall, Free Street, Bishop's Waltham, typically on the first Thursday of each month and occasionally on other Thursdays—please check our website calendar for exact dates.

Please take a look at our website at

www.bishopswalthamphotosociety.co.uk or drop an email to info@bishopswalthamphotosociety.co.uk for information on the dates of our meetings.



Guest Speaker
Janey Divine:
Documentary

Thursday 4th December 2025 at 7:30pm

"an account of something told predominantly through photographs with some accompanying text."



Most of Janey's photography now involves working on long term documentary projects. She will talk about two of her most recent projects, describing some of the twists and turns and explaining the reason behind the key decisions that have shaped the development of the projects.



**Bishop's Waltham
Photographic Society**

St Peter's Church Hall, Free Street, Bishop's Waltham, SO32 1EE
Non-members are welcome (entry fee £5).

bishopswalthamphotosociety.co.uk

Meon Valley Carers Group

For carers of someone with Dementia
Receive support, information and signposting
Meet and talk to other carers in similar situations

4th Tuesday of each month 2pm - 4pm

at The Paterson Centre, Church Road, Swanmore, SO32 2PA

The programme for these meetings is varied with speakers ranging from necessary, interesting, factual information to more lighthearted subjects.

Built into the group meetings are arts and crafts, musical afternoons and games suitable for those living with Dementia.



You will be given a warm welcome!



Tea, coffee and biscuits provided.

Free parking in the car park opposite the Paterson Centre.

For more information, please contact:

Allison Mc Nally

tel: 07771 895370

e-mail: allison.mcnally1968@gmail.com



All the world's a stage in our theatre double bill.

Your Christmas pantomime treat is almost here – “OH YES IT IS!”

Dick Whittington strides into the Jubilee Hall with his crazy cat, Elvis, slaps his thigh and sets off to seek his fortune.

On 13th December, we present, **Dick Whittington**, a traditional pantomime for the whole family brought to life by a cast of 5 top professional entertainers. Perfect as a magical Christmas treat for children but also packed full of comedy, excitement and adventure for everyone.

Featuring the wicked Captain Blood, clueless Idle Jack, calamitous Sarah the Cook and many more.



It's all good old fashioned fun that you would normally only see in a top line theatre. Doors open at 1.30pm, Show Starts at 2.00pm. Bar and refreshments available. Book now at www.bwfestival.art, or pop along to Willow Pet Supplies in the High Street or Best Wishes in Brook Street to buy your tickets.

THEN on Saturday 7th February we are thrilled to present “**Agatha Appleton and the peril of the pyramids**”. Once again festival favourites **Rain or Shine Theatre** are back on the road with a good, old fashioned slice of archaeological adventure, heavily laced with Rain or Shine’s trademark silliness

All the details at www.bwfestival.art.



MEON VALLEY LIONS CLUB

LOCAL YOUTH DONATIONS

The Meon Valley Lions are constantly looking for good causes to support and recently donated funds to enable the Newton and Soberton Guides Company, to purchase new challenge books to obtain badges. The books contain numerous challenge badges, and the new books include the latest challenges, and how to earn them – good luck and let’s see everyone wearing those uniforms sleeves with pride.



SANTA COLLECTIONS

Meon Valley Lions Club are busy organising the Santa Collections throughout December so look out for updates in our social media for routes and dates.

For the Club to remain successful we would like to attract new members. It’s not all work, we have plenty of fun too! So if you’d like to join, giving as much or little of your time as you can commit, please get in touch. Tel: 07443 753780 / Our website: <https://www.meonvalleylionsclub.org.uk>

Rustles in the leaves

As autumn brings misty mornings and crisp evenings, one of our most familiar garden visitors - the European hedgehog (*Erinaceus europaeus*) - is preparing for its long winter sleep. These round, brown mammals, famously covered in around 7,000 yellow-tipped spines, are a much-loved feature of Britain's wildlife and an important part of our natural heritage.

Often called the gardener's best friend, hedgehogs are expert nocturnal foragers. They emerge at dusk to snuffle through long grass, flowerbeds, leaf litter, and vegetable patches in search of worms, beetles, slugs, and other invertebrates, making them natural pest controllers. Hedgehogs have a keen sense of smell and a remarkable ability to remember the location of abundant food sources.

Mostly active from April to October, they thrive in a variety of habitats, including woodland edges, farmland, parks, and suburban gardens, wherever shelter and food are plentiful. Solitary creatures for most of the year, they roam several miles each night in search of food and mates, coming together only during the breeding season in late spring and early summer.

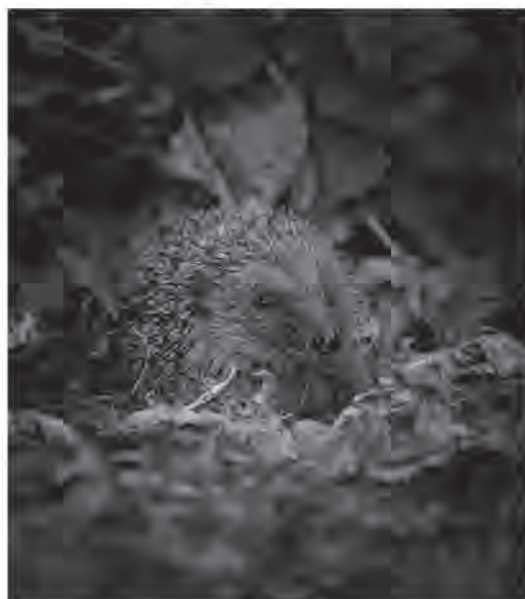


PHOTO: JON HAWKINS SURREY HILLS PHOTOGRAPHY

By this time of year, hedgehogs are busy feeding as much as possible to build up fat reserves before hibernation begins. As temperatures drop in November, they retreat to sheltered spots such as under sheds, log piles, or dense shrubs, creating a nest of leaves and twigs known as a hibernaculum. Inside, their heartbeat slows dramatically and their body temperature drops, allowing them to survive for months without food.

Sadly, the familiar hedgehog is now facing real challenges. Once a common sight in gardens across the UK, numbers have declined sharply over recent decades. Habitat loss, pesticide use, and busy roads have all taken their toll, leaving hedgehogs struggling to find safe places to feed and hibernate.

Fortunately, small actions at home can make a big difference. Hampshire & Isle of Wight Wildlife Trust recommends leaving areas of long grass, creating safe corridors between gardens, and avoiding harmful chemicals all help provide the refuge hedgehogs need. Every connected green space can become part of a larger, life-saving network for this cherished species. With a bit of care and community effort, we can help ensure hedgehogs remain a welcome part of our gardens for generations to come.

Find out more about hedgehogs on the Hampshire & Isle of Wight Wildlife Trust website: hiwwt.org.uk/wildlife-explorer/mammals/



**Hampshire &
Isle of Wight
Wildlife Trust**



Soberton Recreation Ground

The Parish Council wishes to renovate the whole of the Recreation Ground. The second stage of the football pitch renovations has now been completed; as the seed germinates we expect to develop a thick sward for grass. This will be cut and rolled in the spring to prepare for the season of 2026/27.

Having started with the football pitch it is important to consider the remainder of the area and bring it to a standard of which we can all be proud. Perhaps the introduction of an all weather path around the whole area, adding benches, picnic tables and bins etc, possibly a new young children's play facility for those not properly catered for in the main play area, a wildlife area and so on.

What would you like to have? To find out we have created an online questionnaire/survey,

<https://forms.office.com/e/afXRDA2Q3t>

The PC are placing hard copies in the porches/foyers of St Peter's and Holy Trinity churches, Rookesbury Hall and Soberton Village Hall. There will also be an envelope to return completed survey forms at each location.

Soberton Parish Design Statement (PDS)

The PC has received detailed notes from the South Downs National Park Authority and are expecting comments from Winchester City Council shortly on the draft PDS. Both planning authorities have to approve the document which will become Supplementary Planning Guidance (SPG). Following receipt of these comments the PDS group will make the requested changes and seek approval to go to public consultation early in the new year.

Fireworks

Please consider not having firework displays at home. These can cause great distress to horses, livestock, pets and wildlife as well as being a fire risk. There are many organised firework displays in Hampshire which anyone can attend.

Don't drink and drive

Driving under the influence of alcohol or drugs can cause accidents which impact families and communities. Enjoy the festive season but please think ahead, avoid driving after having a drink, have a designated driver.

Cycling in the dark

Cycling without lights or reflective clothing is dangerous, particularly on unlit rural lanes. Lights are a legal requirement and wearing light coloured and high-vis clothing makes you more visible.

Package Sewage Treatment Plant (PSTP)

Most of us are not connected to a common sewage system and therefore have to deal with waste water (sewage) from our dwelling or business unit. Unless you have an approved Package Sewage Treatment Plant (PSTP) which discharges 'drinkable water' all your waste must be taken away. Therefore those with a traditional cess pit or septic tank system which discharges grey water or leaks into the aquifer could be doing so illegally (since 2023). The water authorities who monitor discharge in to the aquifer are encouraging property owners to seek independent advice on this matter.

I wish everyone a merry Christmas and happy New Year, and acknowledge my colleagues on the Parish Council for their work, time and commitment, thank you.

John Hyland
Chairman
chair@soberton-pc.gov.uk



Winchester District Councillor Report – A Turning Point for Transport in Hampshire?

In 2024, over 9.6 billion vehicle miles were travelled on Hampshire's roads – a 1.5% increase on the previous year, and nearly back to pre-pandemic levels. It's a striking figure, and one that reflects what many of us experience daily: busy roads, long queues, and growing frustration.



As Councillors, we are regularly contacted by residents about traffic volume, speeding, and the lack of viable alternatives to driving. These aren't abstract policy issues – they're real, everyday challenges. From the gentleman who queues every morning just to exit his close, to those without cars struggling to reach hospitals or shops, the impact is felt across our communities.

Yet despite this, most of the funding in the new South East regional transport strategy is still being directed towards building more roads – even though we know that more roads often lead to more traffic.

There is a better way. What we actually need is:

- Smarter road design
- Better buses and trains
- Safe, accessible walking and cycling routes

In short, infrastructure that gives people real options. And when we do that, we don't just improve connectivity and tackle social exclusion – we also reduce traffic for those who genuinely need to drive.

Here's the good news: change is coming.

In May 2026, our region will elect a new regional mayor, who will take over responsibility for transport strategy. This presents a huge opportunity to rethink how we plan and invest in transport – moving away from outdated 20th-century solutions and towards a system that is efficient, inclusive, and sustainable



The new mayor will have the power to:

- Set regional transport priorities
- Allocate funding to public transport, walking, and cycling infrastructure
- Work with councils and communities to deliver joined-up solutions

This is our chance to advocate for a transport system that puts people – not just vehicles – at the heart of planning. Imagine what we could achieve if even a portion of road-building funds were redirected to better buses, safer cycle paths, and walkable communities. The impact could be transformative.

We will continue to push for these changes – and we encourage residents to engage with the mayoral election, ask questions, and make your voices heard. Together, we can shape a transport future that works for everyone.

In the meantime, we will continue to convene our Transport and Travel Forum for Parish Councils. The aim is to identify common issues and concerns across Meon Valley parishes that could benefit from shared thinking and collaborative action – both between parishes and with Hampshire County Council, Winchester City Council, and the South Downs National Park Authority.

Let's keep working together to make transport in our region safer, fairer, and more sustainable.

Councillors:

Cllr Malcolm Wallace (mwallace@winchester.gov.uk)

Cllr Danny Lee (dlee@winchester.gov.uk)

Cllr Suzanne White (swhite3@winchester.gov.uk)





Advance notice of M27 closure between J9-J11 over Christmas and New Year

Drivers are being advised to plan ahead to avoid severe delays this Christmas and New Year as details are published for a full closure in both directions on a section of the M27 in Hampshire – this is scheduled from 8.00 pm, 24 December 2025 to 4.00 am on Sunday 4th January 2026.

The closure is needed to install a new dual carriageway underpass beneath the motorway - using an innovative time-saving engineering technique being used for the first time in Hampshire. Over the closure period, a giant pre-constructed concrete structure - weighing approximately 8,500 tonnes (2.5 times heavier than HMS Victory) - will be slid 65 metres into a trench cut into the motorway embankment, from its current construction location on the north of the M27. The motorway will then be fully reconstructed above it to watch the short film showing the box slide process visit - <https://vimeo.com/1123890323/a1330d6461>

The one-off closure of this section of the M27 to facilitate necessary improvements to a major component of the J10 improvement scheme, replaces what would otherwise have been many months of lane restrictions, speed limits, and overnight works. It has been timed to coincide with lower traffic levels over the holiday period.

Key information road users need to know during these works:

- The M27 will be closed completely, in both directions, between Junctions 9 (Whiteley) and 11 (Fareham), from 8.00 pm, 24th December 2025 to 4.00 am on Sunday 4th January 2026.
- There will be a signed diversion route along the A27, which is mostly two lanes in each direction, during the closure. This is expected to be busy, particularly between 10.00 am and 4.00 pm every day when drivers should be prepared for severe delays. Road users should plan their journey in advance and consider alternatives including public transport, travelling during less busy times, using different routes, or if their journey is really necessary.
- Drivers will be able to exit the M27 westbound at Junction 11 for Fareham and Gosport, and eastbound at Junction 9 for Whiteley and Park Gate. However, there will be no westbound entry to the M27 at Junction 11 for traffic heading towards Southampton or the A32 (Alton), and no eastbound entry at Junction 9 for traffic heading towards Portsmouth.
- For more information and updates visit www.hants.gov.uk/M27-J10-xmas



The £100 million+ scheme is being delivered by Hampshire County Council, working closely with National Highways. It is fully funded by the Buckland Group, the developer of Welborne Garden Village, and by Homes England. The new underpass will connect Fareham with the Welborne Garden Village development, improving access to the M27 and supporting future growth in the area.

Once complete, the new underpass under the M27 will carry four lanes of traffic - two in each direction - along with a shared walking and cycling route, improving connectivity between Fareham and the new Welborne Garden Village development.

A series of complementary highways improvements on and around Junction 10 are being delivered by the County Council to support the development of Welborne Garden Village, which is due to provide up to 6,000 homes alongside schools and community services, just outside Fareham, and to provide better access to the M27. Under planning conditions for the development, more than 1,160 homes cannot be lived in until the new 'all-moves' Junction 10 on the M27 is completed and operational. The two-year construction scheme is due to be open to traffic in winter 2026.

Budget Consultation

Hampshire County Council is asking people for their views on ways the Authority could balance its books over the next two years, up to April 2027, as costs and demand for local services keep rising alongside ongoing underfunding by central Government.



County council budgets nationally have been stretched to the limit for many years, but in Hampshire, the County Council has worked hard to manage public money carefully – making every penny count, delivering high-performing services and maintaining the second lowest Council Tax rates set by county councils in England. By the end of this financial year, the Authority will have saved £734 million from its annual budget since 2008 - acting early to address financial challenges, often well ahead of other authorities, transforming and working more efficiently to save money, as well as being more commercial in some areas to help generate income.

Despite these steps, financial pressures remain not only in Hampshire but across the country, especially in high demand areas like social care for vulnerable children and adults, and school transport.

Without changes to how Government funds councils, Hampshire faces a budget shortfall of £143 million in 2026/27 and rising to £230 million the following year. We are not asking the Government for favours, just the tools to enable us to keep doing the right thing for our communities.

To give you an idea of the pressures we are facing:

- Every month, 30 older people who were previously paying for their own social care run out of money so we have to step in to cover the costs - adding £18.7 million to the annual bill.
- Residential care costs for older people rose by £15 million in the last year.
- The number of younger adults requiring complex care packages has risen dramatically and now costs an extra £5.28 million each year.
- The number of children with Education, Health and Care Plans to help support their additional needs at school has grown by 33% since 2022/23.
- School transport costs, including for pupils with special educational needs and disabilities, have more than doubled in three years from £43 million to £94 million.

Until Government provides a fairer funding solution in areas like social care and school transport, and for local authorities to have greater flexibility to set Council Tax responsibly in their areas, many councils, like Hampshire, must look for even more ways to reduce their spending in order to balance the books, which they must do by law.

People can have their say until 11.59 pm Sunday 7th December 2025.

People can take part in the consultation via the online response form on the consultation webpage: www.hants.gov.uk/budgetconsultation.

The full information pack about the proposals in the consultation are available on this webpage, as well as details of ways people can respond, including how to request and return a paper copy.

Support for Private Foster Carers

Are you caring for the child of a friend, neighbour or someone in your extended family? If the answer is yes, you could be in a private fostering arrangement

Private fostering is when a child under 16 years (or under 18 years if they are disabled) lives with an adult who is not a close family member for 28 days or more. This could be an extended family member like a cousin or great aunt, a family friend or even a neighbour.

It is a **legal requirement** for the County Council to be notified of a private fostering arrangement by the parent or carer of the child involved. This can be done by telephoning the Multi-Agency Safeguarding Hub on 0300 555 1384.

Hampshire County Council's Children's Services recognised in National Awards

The authority's Out of Hours team, which supports professionals and members of the public with urgent safeguarding or welfare concerns outside of normal office hours, has taken home the gold award for its inspiring teamwork. It was one of five finalists all vying to be named 'Team of the Year' at this year's awards.



The Out of Hours team forms part of the County Council's wider Children's Services, which were judged as 'Outstanding' by Ofsted last year for the second time in a row. The Out of Hours service operates during weekday evenings, over the weekends and on Bank Holidays, and also supports with social care issues involving adults. Support may include responding to safeguarding concerns, providing information and advice, or undertaking assessments or more in-depth social work. The priority is to keep people safe until normal working hours resume.

Did you know that

- Between the 2011 and 2021 Census, Hampshire's population has grown by 83,000 people or 6.3%.¹
- Young people (aged 0-19) made up 23.5% of the population in 2011, this decreased to 22% in the 2021 Census.
- In 2011, 172,700 (13.1%) people were aged 70+. By 2021 this figure had risen to 228,500 people, or 16.3% of the population.

- Educational attainment is better than the national average with 68% GCSE pupils attaining grade four in both English and Mathematics. 67% of primary school pupils achieve expected standards in reading, writing and mathematics in year 6 (age 10-11).
- The percentage of young people not in education, employment or training (NEET) is 1.8%. Over 475 young people aged 16-17 years who are NEET are supported by the County Council to access further education or training.
- Physical activity: Hampshire has more physically active adults compared the rest of England, with 79.7% of adults participating in at least 150 minutes of exercise per week (compared with 66.3% of adults in England). However, one in five Hampshire adults are doing less than 30 minutes of physical activity a week.

Councillor Surgery

There is a Councillor Surgery on the first Saturday of every month, 10.00 am – 12 noon in The Heath Room, All Saints Church, Denmead. No appointment necessary.

And finally, may I wish you all a very happy Christmas and may the New Year see more Peace in the World.

Patricia Stallard

Hampshire County Councillor
Winchester Southern Parishes
[Newlands, Denmead, Southwick, Boarhunt, Wickham, Knowle, Soberton, Newtown]
patricia.stallard@hants.gov.uk



SOUTHWICK REVIVAL DONATES £75,000 TO CHARITY AT VOLUNTEERS' REWARD AND RECOGNITION EVENT.

A rousing cheer rang out in Southwick's D-Day Memorial Hall when the fundraising total from the Revival weekend held in June was announced in a dramatic flourish by the Chairman of the Revival Committee, and Soberton Heath resident, Martin Bazeley BEM.

"A tremendous figure of £75,000 was raised this year!" Martin beamed as the total flashed up on the screen to loud applause. "Our success allows us to distribute large sums to military charities, supporting both the Forces and their families.

He continued: "Every year we make a significant donation to Rowan's Hospice for their highly valued support to our community. We also donate significant cheques to the many local organisations who help make our Revival weekend so successful.

"Our very generous sponsors cover the main costs of running the D-Day Revival so I cannot thank them enough for their continued support. Now we start planning for next year with the Revival weekend taking place on the actual Anniversary of D-Day, 6 to 7th June 2026. Save the Date!"

The Revival relies on enthusiastic visitors to raise these funds entirely from ticket sales and revenue from concessions. Despite inclement weather on the Saturday afternoon this year, loyal visitors revelled in the whole weekend's immersive experience. The entire village rolled back the decades to June 1944, with villagers and re-enactors dressed in period costume, decorating the streets with bunting and vintage vehicles. The Southwick Revival is now so popular in the region, still representing incredible value-for-money, while adding new activities each year since the event began in 2014.

Over 100 volunteers, sponsors and their guests enjoyed a special evening of reward and recognition for their sterling efforts towards the success of this year's commemoration of the D-Day Spirit and VE Day anniversary. A generous buffet provided by The Golden Lion followed the cheque presentations.

Large cheques were presented to a number of key charities by Revival President Colonel Jeremy Green OBE, DL of Hampshire who reminded the audience of the huge military footprint of serving and veteran forces in the county. He also mentioned that he had heard from Susan Eisenhower very recently. The granddaughter of



wartime leader, General Eisenhower, Susan was one of the VIP Guests in 2024. She recalled her special memories of visiting the village of Southwick during the D-Day 80 commemorations saying it was one of her very favourite events that year, a welcome comment that delighted the Revival Committee.

A huge £15,000 cheque was received by SSAFA's Havant District representative, Royal Navy veteran Mike Kelly and their retiring local treasurer Sheila Hey.

Rowan's Hospice received a cheque for £10,000 in a moving presentation from Hannah Stevens to the Hospice's Deputy CEO, Jo Fricker. Hannah is the widow of Andy Stevens, who was an enthusiastic supporter of the Revival for many years. A keen historian and business owner of Airsoft based in Fort Southwick, in 2024 his team worked hard to restore the tunnel infrastructure to enable the Revival's dramatic re-enactment the Allied Command's Underground Communications HQ. Tragically Andy lost his courageous battle against terminal illness but Hannah explained how their family were given excellent support throughout from Rowan's Hospice and said how proud she was to be able to present the cheque to Rowan's on behalf of the Revival.

The homeless charity for veterans, Alabare, received £3000 which was presented to the charity's representative Yana Preston.

Other organisations to receive generous cheque donations included:

The Royal Marines Voluntary Cadet Corps, Denmead and Wickham's Scout Group, The CPPTD (vintage bus charity), the Military Wives Choir, Hampshire's Young Farmers' Club, the SNUG (local Ukraine support group) Models for Heroes, The RAF, Army and Royal Navy Benevolent Trusts, Battle of Britain Memorial Flight, Spirit of Normandy Charity. Money was also donated to Southwick Park's Families' Day, the People's Mosquito, and local community organisations in Southwick village.

Special guests Mr Jack Churchill and his son, Alexander, descendants of wartime PM Sir Winston Churchill, launched the 2025 Revival weekend. Alexander helped to bury a time capsule created by Southwick's youth club in the grounds of St James Church.

New activities in 2025 included a brand new safer entrance from the car park to Southwick village simulating Pegasus Bridge including a Horsa glider and soldier re-enactors guarding the bridge spanning the small river in the meadow. The Revival ticket office resembled Café Gondre the first civilian establishment liberated by Allied troops in 1944.

A French themed quarter was established in the village for 2025, marking the significance of the VE-80 Anniversary Year. Music, song and can-can dance enlivened spirits while special guest Yvette, the French waitress from the TV Comedy "Allo 'Allo" aka actress Vicky Michelle spoke in the event marquee and met visitors as they enjoyed the music and delicious French culinary delights in the French zone.

Further afield a new experience was established in nearby Place Woods saw a re-enactment of the 21st Army encampment where visitors saw the actual site where 80 years ago soldiers prepared themselves for D-Day. Planning now continues to enhance the whole weekend for 2026.



Chair of the Committee Martin Bazeley BEM reveals the huge sum of £75,000 raised from 2025's Southwick Revival ticket sales.

Timetable from July 2025

Mondays West Meon to Fareham

0930	West Meon Thomas Lord PH
0933	Warnford Village Hall
0938	Exton The Shoe PH
0940	Meonstoke PO & Stores
0944	Meonstoke Pound Cottages
0951	Droxford Square
0955	Brockbridge The Hurdles
1000	Soberton Village Hall
1003	Webbs Green War Memorial
1006	Soberton Heath Chapel Road Pond
1008	Soberton Heath Bold Forester PH
1010	Newtown Rookesbury Hall
1015	Hundred Acres
1027	Fareham Library
1032	Fareham Station <i>Drop off only*</i>
1039	Fareham Sainsbury's

Return:

1230	Fareham Sainsbury's
1235	Fareham Library

Wednesdays Soberton to Petersfield

Including all request stops on A32 Droxford- West Meon

0930	Soberton Village Hall
0934	Brockbridge (The Hurdles)
0939	Droxford Square
0946	Meonstoke Pound Cottages
0951	Corhampton
0954	Warnford George and Falcon
1013	Petersfield Station <i>Drop off only*</i>
1017	Petersfield Square
1022	Petersfield Tesco

Return:

1225	Petersfield Tesco
1230	Petersfield Square

Fridays Soberton to Winchester

0930	Soberton Village Hall
0934	Brockbridge The Hurdles
0939	Droxford Square
0945	Meonstoke Pound Cottages
0949	Meonstoke PO & Stores
0951	Exton The Shoe PH
0956	Warnford Village Hall
1016	Winchester Broadway
1023	Winchester Station <i>Drop off only*</i>
1030	River Park Leisure Centre

Return

1225	River Park Leisure Centre
1230	Winchester Broadway

No service on other days or public holidays. £6 return, £3 single any journey. Bus passes accepted. Under 16 half fare. Under 5 free. Dogs allowed subject to driver discretion. Timings are strict, bus will not wait after scheduled time.



USEFUL INFORMATION

Any additions or changes, please contact the editor

USEFUL NUMBERS		
Good Neighbours Group offers transport to medical appointments (see page 7) ❖ Kate Harvey on 07843 496852 ❖ Kate Chesters on 07710 716664		
Community Support Officer Gary McCulloch ACSO		07442 156124 acso@swanmore.org.uk
Doctors Surgeries	Wickham Droxford Denmead Bishops Waltham	01329 833121 01489 877588 02392 239630 01489 892288
CAB Adviceline		0800 144 8848
Meon Valley Carers Group		01264 332297 (option 3)
Age UK Advice Line		0800 678 1602
National Gas Emergency		0800 111 999
National Power Cut Helpline		105
Portsmouth Water emergency line		02392 477 999
Southern Water emergency line		0330 303 0368
BT Priority Fault Repair Scheme		0800 800 150
Home-Start		0330 124 2095
LOCAL FACILITIES		
Soberton Village Hall Booking	For SVH booking, please use e-mail address below sobertonvillagehall@googlemail.com www.sobertonvillagehall.co.uk	
Rookesbury Hall Booking	Jenny Doney	01329 834392
Bookings@rookesburyhall.co.uk		
Guide Hut Booking	Caroline Rogers	01489 877430
guidehutsoberton@gmail.com		
CHURCHES		
Newtown Church Warden	Fra Wells	01329 834130
Soberton Church Wardens	Malcolm Chapple	01489 877151
PCC Secretary(N)	Malcolm Padgett	01329 834684
Parish Secretary Contact (St Peter's)	Jackie Hunt	07940 649691
Capt. Of Bells(S)	Caroline Rogers	01489 877430
Churchyard Keeper (S)	John Lester	01489 878557
Parish Safeguarding Officers	St Peter's, Soberton Jackie Hunt	Stpc.safeguarding@gmail.com
	Holy Trinity, Newtown Caroline Barfoot	htn.safeguarding@gmail.com

LOCAL CLUBS AND INTEREST GROUPS		
Brownies	SobertonNewtownBrownies@gmail.com	
Guides	SobertonNewtownGuides@gmail.com	
Stitch & Chatter	Louise McEwen Sandra Henderson	01489 877448 01489 877978
Local History	Lyndon Palmer	07881 991763
Soberton Utd FC	Steve Norris	07853 292881
Soberton Players	Susan Hyland	01489 878724
Table Tennis	Pete Woodacre Adrian Hunt	01489 877768 01489 878141
Ladies Group	Liz Whales	01489 877712
Conservation Group	Phil Bergin	02392 632551
Meet&Eat	Sue Musselwhite	sue@poppyhill.net
DISTRICT COUNCILLORS		
Central Meon Valley Councillors	Malcolm Wallace Danny Lee Suzanne White	See page 45 for contact details
County Councillor	Patricia Stallard	02392 251484
SOBERTON PARISH COUNCIL		
www.soberton-pc.gov.uk https://www.facebook.com/SobertonParishCouncil/		
John Hyland Chairman	chair@soberton-pc.gov.uk	
Neil Findlay Vice-Chairman	vicechair@soberton-pc.gov.uk	
David Cleeve	Cllrcleeve@soberton-pc.gov.uk	
Sam Marland	Cllrmarland@soberton-pc.gov.uk	
Paul Henderson	Cllrhenderson@soberton-pc.gov.uk	
John Russell-Smith	Cllrrussell-smith@soberton-pc.gov.uk	
Jonty Sherwill	Cllrsherwill@soberton-pc.gov.uk	
Vicki Weston	Cllrweston@soberton-pc.gov.uk	
David Buttriss	Cllrbuttriss@soberton-pc.gov.uk	
Kate Buttriss	Cllrkbuttriss@soberton-pc.gov.uk	
Carol Williams	Cllrwilliams@soberton-pc.gov.uk	
Clerk and Proper Officer clerk@soberton-pc.gov.uk		

Please e-mail copy for the February / March magazine to
gill.highcroft@btinternet.com

NEXT COPY DATE - 12th January 2026 (17:00)



2025

WISHING ALL OUR FRIENDS AND NEIGHBOURS
A MERRY CHRISTMAS AND A HAPPY NEW YEAR

JC & H

Tom and Lizzie Busher

Jo, Andrew, Alfie and Violet

Lynn and Michael Denison

Helen and Bob Stranks

Ian and Cherry Wynne-Powell

Marianne Barker

Jane Masterman and Andy James

Gill and Brian Gray

Tony and Connie Collins

Ann Hughes and Mollie

David and Jill

Perry and Denise

Mary Wren

Denise and Peter Richards

Liz and Nigel Whales

Pauline Walters and Finlay

Jane and Iain Rennie

John and Susan Hyland and family

Miriam and Barry Rowswell

Jane Beardmore

Jan and Caroline

Dick and Rosemary Taylor

Hugh, Philomena, Patrick and Sarah

The Wells Family

Julie and Graham

David and Jane Salmon

Louise, Anthony and Labrador Tiggy McEwen

Sue and Bob

Zoe and Simon Phillips

Sue and Steve Houlding

Ken and Nicky Giles

Elizabeth Woods and Stuart Thom

Franky and John Watkins

Jill and Pete Woodacre

Gus and Liz from Cornwall

Everyone at the White Lion

PiNS – Pride in Newtown and Soberton