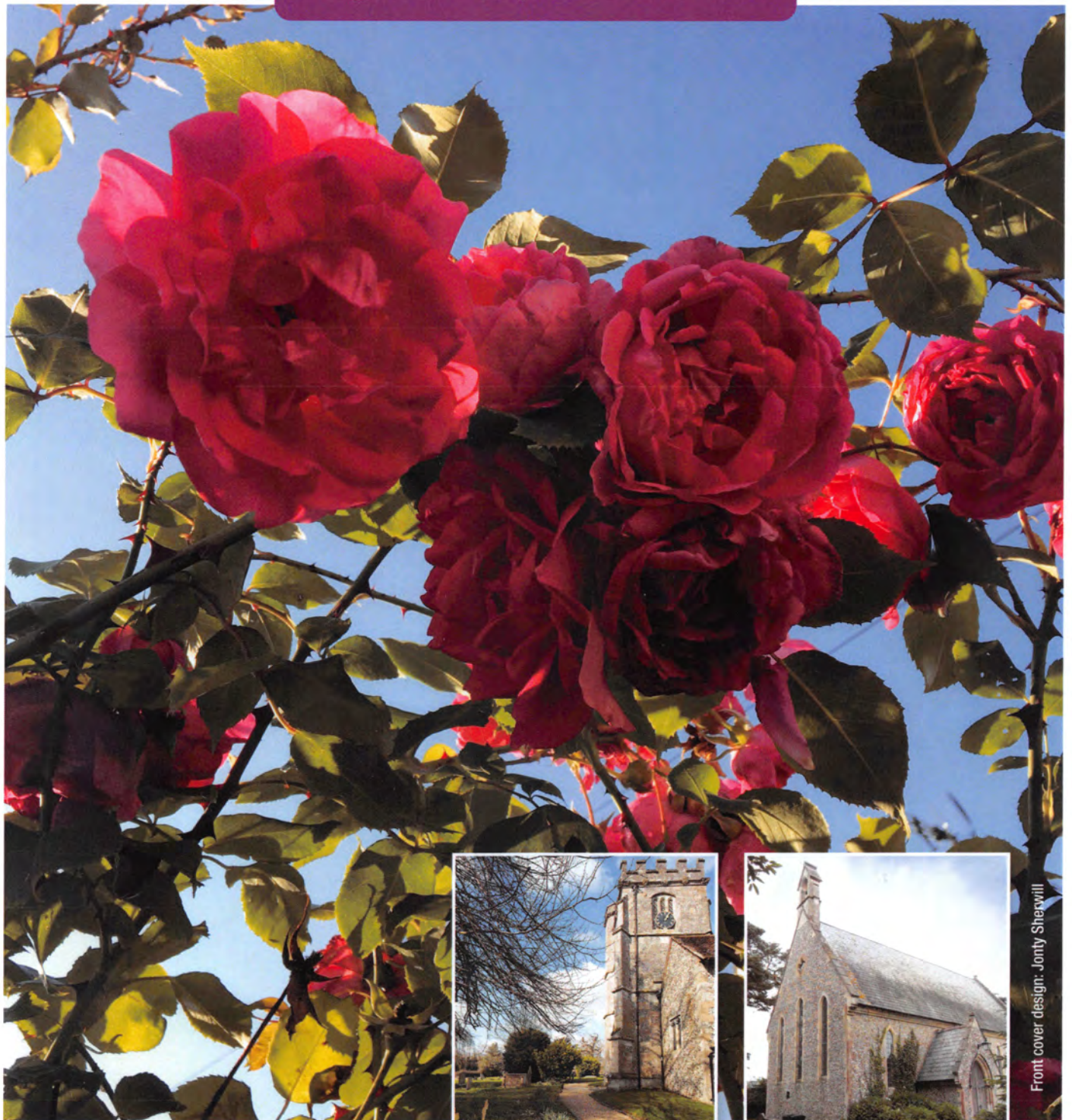


Soberton & Newtown

PARISH MAGAZINE For all the community, delivered FREE to over 700 households

August - September 2021



The joy that roses bring!
Photo by Vicki Weston



Front cover design: Jonty Sheppard

www.sobertonchurch.org.uk

www.newtownchurch.org.uk

St. Peter's, Soberton and Holy Trinity, Newtown.

CHURCH SERVICES – please see page 5

For any enquiries, please contact either

Vicar of Soberton, Newtown and Hambledon

The Reverend David Morgan. The Vicarage, Church Lane, Hambledon. 023 9263 2921.

Email: snhvicar@gmail.com

Licensed Lay Minister (Reader)

Norman Chapman, Meadow Cottage, West Street, Soberton 01489 877378

e-mail: norman@soberton.org.uk

.....

Our Lady Queen of the Apostles, Roman Catholic Church

St. Martin's Street, Bishop's Waltham, SO32 1DN

Father Bruce Barnes (brucebarnes01@gmail.com) 01489 890947

6.00 pm. Saturday (First Mass of Sunday)

9.30 am. Sunday

There are Sunday evening services in Winchester and in Fareham.

For further information contact Anthony McEwen 01489 877448

The Methodist Circuit. Services in the area are as follows:-

Shirrell Heath 10.30 am & 6.00 pm

Waltham Chase 10.30 am

Bishops Waltham 10.30 am

Swanmore 10.30 am & 6.00 pm

Hambledon 11.00 am & 6.00 pm

MAGAZINE PRODUCTION & COMMITTEE

Chairman: Perry Abbott 02392 632338

Editor: Gill Gray 07711 058760 gill.highcroft@btinternet.com

Advertising: Jo Nield 07974 255454 joanna.nield@hotmail.com

Small Ads: Jenny Clarke 01489 877836 caprileo88@aol.com

Circulation: Pete Woodacre 01489 877768

Treasurer: John Rowlinson 01489 877830

Secretary: Gill Gray (acting) 07711 058760

Typesetting of advertisements and printing: Solent Design Studio

Front cover design: Jonty Sherwill - www.sherwilldesign.com - 01329 835555

Contents

- 4 ❖ Foreword ... Don't kick the habit
- ❖ Thanks to Annie Jacobs
- ❖ A warm welcome to ...
- 5 ❖ Church Services
- 6 ❖ Soberton Fete 2021
- 7 ❖ Children's Week at Home 2021
- 8 ❖ Short Story Competition – Soberton Parish Council
- 9-11 ❖ What's going on in our villages – LOTS!
- 12 ❖ 'Mindfulness' Colouring page
- 13 ❖ Soberton and Newtown Young Voices
- 14 ❖ *** NEW *** In the garden – August & September
- ❖ Village Diary
- 15-30 ❖ Classified Adverts – please support our local businesses
- 31 ❖ Soberton and Newtown Good Neighbours Group
- 32-33 ❖ Local History...Tennis and Strawberries and other ramblings
- 33 ❖ Jumble Trail Update
- 34 ❖ Sourdough Surgery #3
- ❖ Soberton's Norman Chapman – Rotary Club of Fareham President
- 35 ❖ Droxford Junior School / FODS
- 36 ❖ Logo competition - Soberton Parish Council
- ❖ Hidden away – Hampshire & IoW Wildlife Trust
- 37 ❖ Soberton Parish Council
- ❖ Planning Applications
- 38-39 ❖ Winchester City Councillor News
- 39 ❖ Bee the Change
- 40-41 ❖ Hampshire County Council
- 42 ❖ Meon Valley Community Bus – it's back!
- 43 ❖ Useful information
- 44 ❖ From the Archives ...

**Please e-mail copy for the October / November magazine
to gill.highcroft@btinternet.com**

NEXT COPY DATE - 20th September 2021

Don't kick the habit

During my recent illness, I took up running. I had heard many times that it was good for your mental health, so I thought I would give it a go. After all, it doesn't really cost much to just go out and run. What I had heard was right, it did turn out to be good for my mental health. To my surprise, I have even found myself enjoying it.

In all honesty, it might be stretching the truth to call what I do 'running'. It's more like a gentle jog, often with a bit of walking thrown in as I tire myself out. I don't go very fast, and I don't go very far. But what I have learned is that the more often I go, the easier it gets; and the easier it gets, the more I enjoy it, and the more often I want to go. Conversely, when I don't go very often, it gets harder, I enjoy it less, and it's more effort to go in the first place.

It's easy to think of the word 'habit' only in a negative way, of doing something that we know is bad for us but can't manage to stop – just another word for 'addiction'. But a 'habit' is really any kind of repetitive behaviour. Some habits can be really good for us. My running is a bit like that. The more I am in the habit of doing it, the better I feel, both mentally and physically.

What is more, habits change us. The more we do something, the better we learn to do it, until in the end it becomes second nature. The Christian life is full of these good habits. Prayer, reading the Bible, worshipping together – these are all good habits, and like any habit, we get better at them the more we do them. That's why Jesus tells us to do radical things like love our enemies.

He doesn't mean 'have warm feelings about your enemies', he means 'behave in a loving way towards them'; because when we get into the habit of behaving in a loving way towards somebody, eventually we really do begin to love them. The reverse is also true. If we constantly behave badly towards somebody, eventually we end up thinking badly of them.

I think the last 18 months have changed a lot of our habits. Some of us have got out of the habit of commuting to work every day, and might now be thinking that we don't particularly want to start that habit again. We might have little choice in the matter, but it might also be an opportunity to rebalance life so that we spend more time at home with our families, and of course contribute a little less pollution. Maybe there are other habits we have broken which it would be better if we didn't re-start. On the other hand, I know I am not the only one who has got into the habit of taking more exercise than I used to, and that is an example of the kind of good habit we should be trying to continue. The great thing about good habits is that it is never too late to start one.

One of the habits that I think a lot of us have developed recently is the habit of looking after and looking out for each other. I have certainly been grateful to so many people who have been looking out for me in recent times. It is a habit I think we all should try and continue – and like all habits, the more we do it, the easier it will be for us to keep doing it. It is the kind of habit that will continue to make our communities even better places to live, and it is certainly the kind of habit of which Jesus would approve.

Fr David

Thanks!

THANK YOU ANNIE!

A big thank you from the magazine committee to Annie Jacobs who has retired from the magazine committee after just over 20 years as the secretary.

A great job, Annie, thank you – you will be missed! And thanks for the copies of the AGM minutes back to December 1999!!

Hello!

A warm welcome – we look forward to meeting you!

Welcome to Suzanne and Ian White who have just moved into Valley View in the High Street from Knowle.

They have a son Harrison, about to start Swanmore College in September, and an old cat called Roger.

Suzanne, Ian and Harrison are already loving the fantastic views and great community spirit here.

Church Services - August / September 2021

August

1 st	1100	N/E	Soberton
	1100	Holy Communion	Hambledon
8 th	0930	Holy Communion	Newtown
	1100	N/E	Soberton
	1100	N/E	Hambledon
15 th	0930	N/E	Newtown
	1100	Holy Communion	Hambledon
22 nd	0930	Holy Communion	Newtown
	1100	N/E	Hambledon
29 th	1000	United Benefice Service Holy Communion	Soberton

September

5 th	0800	Holy Communion	Hambledon
	0930	N/E	Newtown
	1100	Holy Communion [Rocs]	Soberton
	1030	SFS	Hambledon
12 th	0800	Holy Communion	Soberton
	0930	Holy Communion	Newtown
	1100	N/E (Harvest)	Hambledon
19 th	0800	Holy Communion	Newtown
	1100	N/E	Soberton
	1100	Holy Communion + Baptism	Hambledon
26 th	0800	Holy Communion	Soberton
	0930	N/E (Harvest Festival)	Newtown
	1100	Holy Communion	Hambledon
	1830	Evensong	Hambledon



Saturday 18th September 2021

SOBERTON CHURCH GREEN 1.30pm

**To be opened by Masterchef finalist Gill Holland
after a welcoming speech from Rev. David Morgan**

The following people have very kindly agreed to be responsible for collecting donations for the stalls listed below. Please e-mail sobertonfete@gmail.com if you have anything to donate.

Aladdins Cave (Anything except electrical items)	Jackie Hunt	sobertonfete@gmail.com
Bottle Stall	Shirley Tebby	
Books, CD's & DVD's	Shirley Tebby	
Candy & Chocolate Stall	Wendy Prangnell Shirley Tebby	
Country Fayre Jam, Chutney, Home Grown Produce, Cake etc	Jackie Hunt	
Haberdashery Wool, Fabric, Buttons, Craft Kits, etc	Caroline Rogers Shirley Tebby	
Horticultural Plants & Pots, Seeds, Tools, etc	Jane Salmon	
Jewellery & Accessories	Shirley Tebby	
Toys & Games	Wendy Prangnell	

If anyone would like to help on the day with serving teas or could make a cake for us, please contact Wendy Prangnell on 07717 840873.

We always need help with lifting, shifting, putting up and taking down stalls etc before and after the event. If you could spare a couple of hours to help, please contact Wendy Prangnell on 07717 840873.

***** WE LOOK FORWARD TO SEEING YOU! *****

Subject to COVID guidelines

Invitation to join us for Children's Week at Home 2021

Whilst we aren't able to hold our traditional Children's Week at the Guide Hut this year, we have planned a special Children's Week at Home for 2021. We will be using Facebook as our main sharing hub, but if you don't use Facebook we will contact you via email and you can send us any photos to be included on dedicated Facebook page. Most activities are designed for children between 5 and 11 yrs - but anyone of any age is welcome to take part!

During the week beginning Monday 2nd August we'll post daily activities and challenges based on some of the favourite bits of Children's Week - badge making, model building, trails and games which can be done at home. Participants (with the help of a parent) will be able to post photos, videos and answers into a closed Facebook page, so they can share what they've been doing and see what others have achieved. All participants will be able to collect a free pack for the week with craft items, game sheets, quizzes and treats. You don't have to do it day by day, you can choose when you do the activities at a time to suit your family.

If you would like to take part please pre-register your children by the 30th July using the link below, this will enable us to prepare packs and set you up on the Facebook page securely.



One of the activities is making the CW badge - you will need to design your own badge at home and then can visit the hut at a pre-arranged time to make your design into a badge. The badge should be 52mm (5.2cms) in diameter with a 4mm border – totalling 56mm (5.6cms).

Please re-register to be involved the link to the form is:

<https://forms.gle/oCKCCG9YNcERRX7D8>

or email SNCWeek@gmail.com and we will send you a link.

We look forward to enjoying some summer fun together but apart!

Soberton Parish Council



Short Story Competition

“Your Own Story”

As part of the Community Engagement within our Parish, the Parish Council is pleased to organise a ‘Writing Competition’ for young people in the following school year age groups (as at end of summer term 2021, entries will be judged by year groups below):

Years 1 and 2

Years 3 and 4

Years 5 and 6



Write your own story about your experiences during the school holidays and what you do to keep busy whilst having fun! Or maybe a story based on your favourite character’s holiday adventures. Your story should be no longer than 300 words and should have a title, a beginning, a middle and an end. Make it fun and don’t be too serious – a story or a poem would be good! Maybe you could include a drawing that relates to your story. If 300 words is a bit too much for the younger ones, perhaps send in a drawing or painting that tells the story for you.

Please either email your entry to clerk@soberton.org or pop it through the Clerk’s letterbox at Oakdene House in the High Street, Soberton.

There will be prizes for the winning entries in all three year groups!

Entries will be judged by a local author and prizes will be presented at Soberton Village Fete on Saturday 18th September 2021. All winning entries will be published in the October / November edition of the Parish Magazine.



The closing date for entries is 30th August 2021

Happy writing and good luck!!

Always lots going on in our villages – please join in, especially as we exit the COVID restrictions ...

Soberton and Newtown Conservation Group

Anyone strolling around the area over the past 18 months cannot fail to have been impressed by the abundance of natural treasures around us – but this beauty doesn't happen entirely by accident.

Behind the scenes are many individuals working hard to create private wildlife gardens, hay and wildflower meadows, ponds and woodland. Others, such as the Soberton and Newtown Conservation Group (SoberNewts for short) keep an eye on a number of local sites of biodiversity importance – and often roll up their sleeves and wield their strimmers and loppers in work parties to keep them that way. These sites include:

Soberton Down, where SoberNewts counted thousands of native orchids this summer and recorded nearly 40 species of butterflies and moths. The continuing success of the Down as a wildlife haven is due to the many work parties held during the winter and early spring to clear invasive bramble and blackthorn. In the summer months ragwort, hemp agrimony and creeping thistle need to be got under control.

Soberton Pond, Heath Road. An invertebrate survey by SoberNewts in June recorded excellent levels. In normal times, we trim vegetation within and around the pond once or twice a year but after the lockdown we have a bit of catching up to do in the autumn. And to anyone thinking of adding goldfish to the pond – please don't. Goldfish destroy the invertebrates and other indigenous species in the pond.

Ingoldfield Lane ephemeral or temporary pond. A junior recruit to the team has conducted a biodiversity survey on this piece of previously neglected Common land. It started as a Duke of Edinburgh project but will develop hopefully into a full study of this unusual habitat where ponds appear and disappear according to rainfall levels.

Old Chalk Pit, Chalk Hill. A small team of SoberNewts are surveying this long abandoned and overgrown area – another tract of Common land - at the request of the Parish Council and the South Downs National Park.



DO JOIN US

If you enjoy our natural surroundings and have some time and energy to spare, please consider joining the SoberNewts. Membership is free and your involvement can be either be very occasional or regular depending on what suits you.

At present most of our work parties are during the week as we are predominantly retired people, but we can organise weekend sessions too if that is better for you.

Follow us on www.facebook.com/sobernewts for more info. Email phil.bergin@btinternet.com if you would like to be added to our mailing list.

Soberton Village Hall – We are Open

Since re-opening in May we're very pleased to say many regular hirers are now back, under Covid legal and recommended guidance..

So far we have:

- Ballet and Tap classes Tues and Thursday Evening
- Pilates groups operating Monday morning and Thurs afternoon
- Moo Music – Mother and Toddlers fun group on Thurs morning
- Table Tennis – League Players Weds evening and Social play on Friday mornings
- Art Classes – Weds mornings

Hoping to return soon are:

- Soberton Players with an Autumn Performance
- Folk Dance on a Sunday
- and Bridge who operate normally on a Mon and Weds afternoon.

If anyone is interested in attending any of these groups please look at our website for details <http://www.sobertonvillagehall.co.uk/events-classes/> or contact our booking secretary Katie for more information on 07850 569548

Soberton & Newtown Ladies Group

Seventeen of us met, on 7th July, in the garden of Soberton Village Hall to enjoy bubbly and a chat. Fortunately, the rain held off so it was lovely to meet face to face.

We are starting what we hope will be a more normal year on 1st September at 7.30pm in St Peter's Church Soberton. We will hold the meeting, postponed from last year, about the church bells and bell ringing. The church is spacious and will accommodate members who feel safer distancing.

Our group is open to all ladies in the villages and new members are always welcome.

For more information, please contact

Liz Whales (Secretary) (01489) 877712
lizwhales@aol.com

Helen Stranks 01489 878270
helen.stranks@btopenworld.com

Soberton Players back in rehearsal

After a break of nearly 18 months, Soberton Players are delighted to be back in rehearsal for their long-postponed production of "Ladies Down Under."



This play is a sequel to our very popular "Ladies Day" by Amanda Whittington, in which four fish factory workers from Hull hit the jackpot at the races.

In "Ladies Down Under" we meet them all again, celebrating their winnings in style with the trip of a lifetime to Oz and discovering that there is more to life than money.

Fingers crossed, we will be welcoming you the rescheduled show in Soberton Village Hall on **Thursday 18th to Saturday 20th November** – dates to put in your diary now!

Booking details will be published nearer the time so watch out for posters, Facebook publicity and parish mag announcements.

And although many of the original cast will be on stage, there are some minor roles still to be filled, as well as plenty of backstage help required. So if you feel this is the time to reveal your inner "luvvie" we would love your help so please get in touch with us via our Facebook page - facebook.com/sobertonplayers

... and more ...

Soberton and Newtown local history society

Our society has been active for over 40 years now, not only arranging meetings and outings, but also learning and documenting more about our local history. Our next meeting is August 27th when we will spend a day in Romsey with a blue badge guide, visiting the Abbey and Broadlands. This last year we have been meeting once a month on Zoom, with some really entertaining talks, although it is not quite the same as meeting in person, and we hope we shall be able to get back to a normal meeting this Sept (9th) when Cheryl Butler will talk about Pirates of the Solent.



In normal times, we meet on the 2nd Thursday of each month in the church room at St Peters (parking on the green) at 7.30pm. The talk is around an hour when it is followed by questions then coffee/tea and flapjacks (our secret attraction!). All are welcome to attend, the emphasis is on local history, with some wider ranging talks from time to time.

In the summer we go on outings with a guide, this last May we visited 'Medieval Idsworth', and once a year we travel to visit a more distant place of historical interest, spending a couple of nights in a hotel, dining together in the evenings usually with much laughter and levity! This 3 day/2 night trip is usually in late spring, but this year has had to be postponed to September – still with a bit of Covid doubt hanging over it – to visit the area around Stratford-upon-Avon.

Our society has an archivist, Ann Pendred, who has written a book on our history and who has a wealth of knowledge about the villages and their background. A digital archive is well developed by Jill and Pete Woodacre, we hope it will be used, not only for pictures on the back page of the magazine, but also as a resource for schools. There is a committee which plans the talks and outings, chaired by Jane Salmon. This year's fee is £5, to cover costs/speakers fees (what value!). Do feel free to join us, learning about our history and enjoying it, is blended with friendship.

Droxford & District Branch

Founded on 26th March 1920 as
Comrades of the Great War



The Droxford & District Branch hosts four meetings a year at which non-members are very welcome to attend. The next such meeting is at 7.00pm on Monday 13th September 2021 and will include a talk entitled "A Prison View" presented by Angus Somerville, branch member and Chairman of Winchester Prison Independent Monitoring Board (IMB).



Subject to Covid-19 precautions, the meeting will open at 6.30pm in Droxford Village Hall with a cash bar and will be followed by a curry supper. Should it not be possible to hold the meeting 'live', it will be held on Zoom. Non-members who would like to attend, please email robmunroscott@aol.com so I can update you on arrangements nearer the time.

HMP Winchester is a Category 'B' Prison and Young Offenders' Institution with a population of 690 prisoners and young offenders (aged 18-20), including both those convicted or on remand. Prison staff process up to 20,000 arrivals and departures annually. The challenges faced by IMB board members include overcrowding and poor conditions prevalent in predominantly Victorian buildings, violence by prisoners against other prisoners and staff, drug abuse and self-harm, all impacting upon the prison's primary goal of rehabilitation.

Angus' talk will describe the work of the IMB and what it's like to operate inside a prison such as Winchester, interacting with prisoners and staff, and establishing an effective relationship with both. Angus will set his comments in the wider prison context and welcome questions from those whose views are (hopefully!) from the outside.



The RBL Droxford & District Branch is always looking for new members, both Service and civilian, to help keep remembrance alive and support our Servicemen and women, veterans and their families. For more information or to join us, please contact the Secretary – Cdr Rob Scott RN at robmunroscott@aol.com or 01489 877800.

www.soberton.org/rblweb.

... and more!

Playing the Stockmarket (MVIC)

Whether you are an expert or a novice, are you interested in investing in the Stock Market with 9 others from varying backgrounds in the Meon Valley Investment Club (est 2007).

We meet monthly (currently by Zoom but normally in the pub) to review our investments and new possibilities and then decide whether to hold, sell or buy. Initial contribution is a one-off £500 and then £100 by Standing Order to the Club to make up our £1000pm available for investment. Members may withdraw at any stage and recover their share of the 'pot'

Do NOT join if you are relying on this for your retirement pension but DO join if you like the idea of sharing views on the world's economic, political and technological direction and how they may impact on any particular potential investment we might make

For further info contact our Chair, Hugh Pringle on 02392 632551 and/or join us at our next monthly meet at 7.30pm on the third Monday of the month.

.....And now, back to the script

Feeling somewhat optimistic, we plan to restart meetings of your local, friendly Playreading Group from September. Again, these will be on the 2nd. Tuesday each month at 7.30pm. in the Meon Hall, Meonstoke. {so that's 14th September to start things off}

If you're looking for a new social activity, then do come along – all are welcome.

You don't need to have a knowledge of plays, and there's no 'acting on stage' requirement! We just sit round the table with copies of the script, cups of coffee, and enjoy 'being other characters' for the evening.

Most of the plays are comedies and, since 2014, we've read over 70!

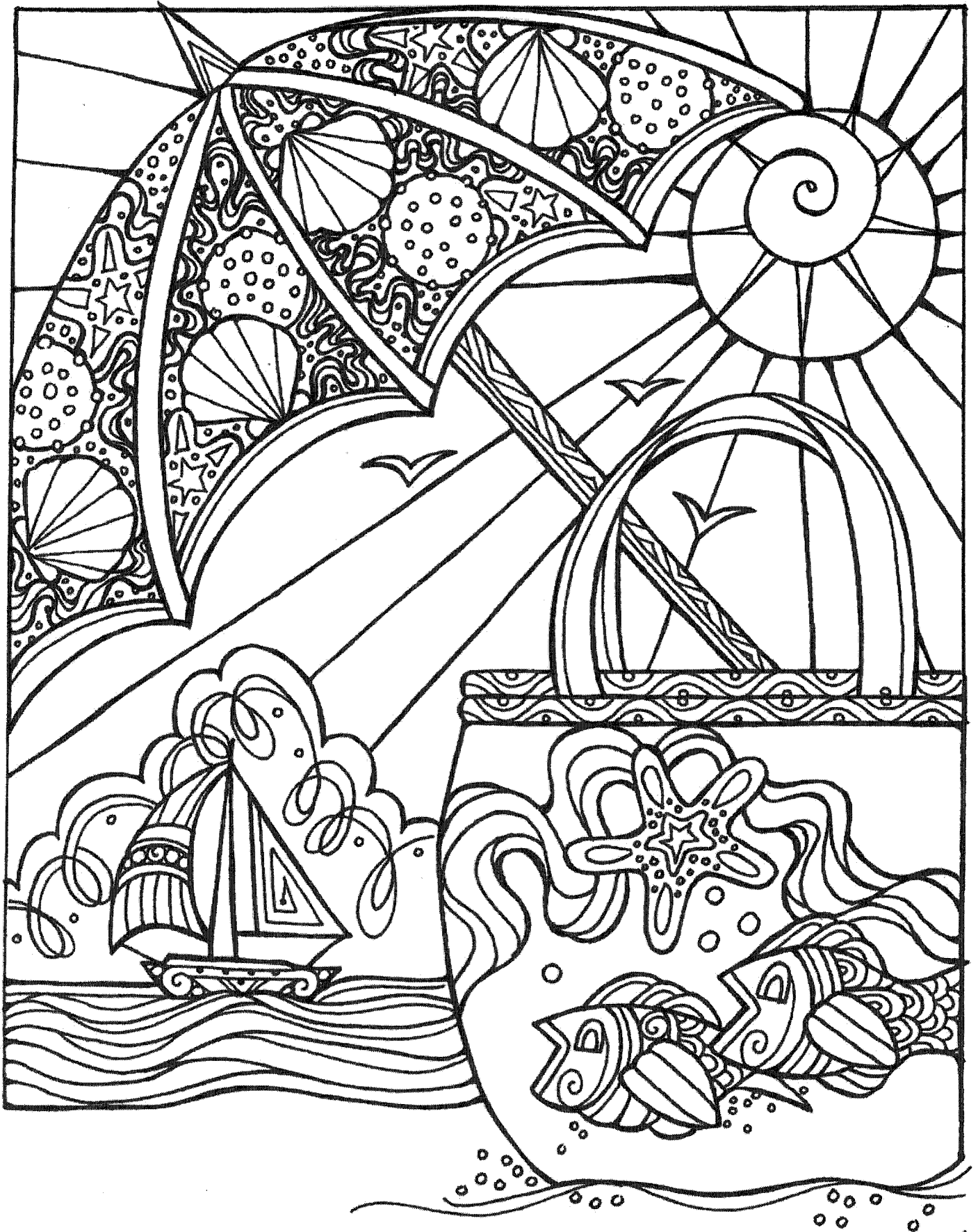
£3 per session covers rent and coffee.
Questions? e.mail us ; gerryhayles45@gmail.com

Rookesbury Hall Jumble Sale

Many of you have been asking when we are having another jumble sale as you have items to donate. The committee have discussed the possibility of having a sale in October but have decided against it. Our priority is to protect the health of our volunteers and customers and we feel that we cannot do this with the current situation of covid.

We will review the situation next year.

'Mindfulness' Colouring page



Soberton and Newtown Young Voices

Jokes

What animal is always at a baseball game?

A bat

What do ghosts eat in the summer?

I Scream.

How do you know the ocean is friendly?

It waves!

Did you know...

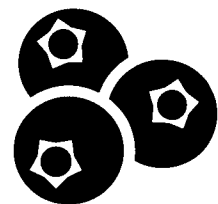
Portsmouth became the longest holding FA cup champions after their win in 1939. This was due to an interruption caused by World War II. The trophy was not presented again until the competition was resumed in 1946 – meaning they held the title for 7 years!

Rocs Report

Rocs meets during the family service at St Peter's Soberton on the first Sunday of every month. New faces are very welcome! We can't wait to meet you soon when we reopen in September.

Recipe: Frozen Yoghurt Smash!

1. In a bowl, mix together 250ml natural yoghurt with 1tbsp of honey and a few drops of vanilla extract.
2. Carefully stir in 150g of berries of your choice- a mixture of raspberries and blueberries works well. Make sure not to stir too hard or the berries will break down.
3. Pour carefully onto a shallow tray or dish lined with greaseproof paper. Spread out the mixture so it is an even thickness.
4. Cover with cling film and freeze for 2-3 hours. Make sure the tray is flat!
5. With a rolling pin, carefully mash the frozen yoghurt slab into small chunks and enjoy!



Diary Dates

Sunday 5th September- Rocs @ St Peter's, Soberton. New families welcome!

Got a joke or comment to share? Email them to: luciehjones@btinternet.com.

In the garden – August & September

Now is the time to enjoy the fruits of our labours in the garden. Despite a topsy turvy April and May everything was pretty much to schedule by early July. However, the summer has not been without its challenges. Blackfly on broad beans and aphids have been prolific this year and as the number of pest controls diminish they are difficult to control. Probably the best way is to use a dilute solution of washing up liquid as a spray at the first sign of pests.

Vegetables – Lift potatoes and onions to avoid unnecessary pest damage. Last sowings of radish, rocket and lettuce can be made in early August. Now is also the time to sow spring cabbage, perpetual spinach and winter lettuce. Runner beans are now coming into their own, but remember to keep them well watered. Check brassicas for aphids and caterpillars and treat as necessary



Fruit – Plant out strawberry plants that have rooted from runners, they will fruit next year. Cut out summer raspberry canes that have fruited to allow next year's canes to develop, and if you have not already done so finish summer pruning of gooseberries, red currants, apples and plums. With the latter it is a good idea to combine pruning with harvesting so that any damage caused when picking can be minimised.



Herbaceous border – Continue dead heading and cut out tall or weak stems from plants that have finished flowering. Feed dahlias and look out for aphids and blackfly and treat with soapy water or proprietary pesticide as necessary. Take cuttings of alpines, penstemons, fuchsias and zonal pelargoniums. Keep deadheading border perennials and annuals to ensure a good succession of flowering.

Trees and Shrubs – Prune shrubs after they have finished flowering and pinch out new shoots of wisteria to about three or four leaves. Lightly prune or trim beech hedges, Eleagnus, escallonia, Hebe, holly, lavender, Pyracantha and privet. Keep hydrangeas well-watered to extend flowering.

Bulbs – Order spring flowering bulbs for planting this autumn. Divide clumps of autumn flowering crocus while they are still dormant.

Containers – Keep well watered and continue dead heading, especially petunias, and you will be rewarded with flowers for several weeks to come.

In the greenhouse – Reduce watering and feeding of tomatoes as the fruits ripen, but make sure the soil remains moist. If it dries out and you then over water the fruit will split. Be watchful for red spider-mite and white-fly on cucumbers and spray as necessary or use sticky white-fly traps if pests are present.

With thanks to John Owen and The Bridge Magazine, Droxford

Village Diary

Month	Day	Event / group	Time	Details on
August	w/c 2 nd	Children's Week at Home 2021	-	Page 7
	16 th	Meon Valley Investment Club	19:30	Page 11
	27 th	Soberton and Newtown Local History Society	19:30	Page 10
	30 th	Short Story Competition - closing date	-	Page 8
	30 th	Logo competition - closing date	-	Page 36
September	1 st	Soberton and Newtown Ladies Group	19:30	Page 10
	13 th	Droxford & District RBL	18:30	Page 11
	14 th	Meon Valley Playreading Group	19:30	Page 11
	18 th	Soberton Fete	13:30	Page 6
	20 th	Magazine Copy date	-	-
October	23 rd	SPC Clinic with PCSO and CSO	-	Page 37
November	18 th - 20 th	Soberton Players 'Ladies Down Under'	-	Page 10

Part P Full Scope
Electrician

Derek Pilcher JIB Approved

*Domestic • Commercial • Industrial
Agricultural • Rewires • Extra Sockets • Lights
Showers • Cookers • Fuseboards
Security Lights etc*

**Testing and Certification
Emergency Call-Out available**

**Tel: 02380 602 627 Mob: 07766 418 039
Email: derekpilcher36@yahoo.co.uk**



All aspects of Carpentry & Building work undertaken

- Extensions • Alterations • Refurbishments
- New Builds • Landscaping

Tel: 02392 632037 Mob: 07885 283036



jay.tucker16@yahoo.co.uk
Fully qualified and insured

Cheekatrade.com
Where reputation matters

HEALTH _ SPACE

Counselling	Hypnotherapy
Massage	Sports Massage
Physiotherapy	Beauty Room
Acupuncture	Aesthetics
Osteopathy	Studio

01489 874100
www.healthspace.co.uk

HealthSpace, The Square, Bishops Waltham
SO32 1AF

Leading the way in providing an
AFFORDABLE PROFESSIONAL service

WESTMINSTER LAW

Wills, Probate & Estate Planning



If you are over 65 it will only cost you £75*
to make or update your Will.

We are also Lasting Power of Attorney
Specialists - only £85* each LPA if instructed
during the Will appointment.

Our prices include home visits and Inheritance Tax advice.

Call us now for a no obligation chat on: **02392 706980**

www.westminster-law.co.uk

email: info@westminster-law.co.uk

Westminster Law Ltd, Grassmere Way, Waterlooville PO7 8QD

*ALL OUR PRICES INCLUDE VAT. These very special rates are only
available if you are aged over 65. Our normal low price for a standard
single Will is £125, or £195 for a couple.

FOR ALL YOUR DRY CLEANING AND LAUNDRY NEEDS

Duvets Laundered
Curtain Cleaning & Alterations
Tailor Repairs & Alterations
Wedding Dresses Cleaned & Boxed
Specialist Rug Cleaning Service



Professional Dry Cleaning Service

Laundry Service
Carpet Cleaning Machine Hire
Waxed Garments Cleaned & Re-Waxed
Pillows Cleaned & Recovered
Suede & Leather Cleaning

4 Merlin Mews, Bishop's Waltham. Tel: 01489 894421 • Agent: Meonstoke Post Office

www.peterabryant.co.uk



STIHL®

Husqvarna HONDA

Carters of Swanwick EST 1921

VISIT STORE or BUY ONLINE ♦ REPAIRS ♦ SERVICE ♦ PART-EX ♦ HIRE

LARGE GARDEN MACHINERY SHOWROOM

Lawnmowers & Ride-Ons
Hedge & Brush Cutters
Leaf & Litter Blow-vacs

Chainsaws & Safety Clothing
Rotavators & Shredders
Log Splitters & Chippers
Snow Sweepers
Used Machines Available

Mail Order Spare Parts

www.cartersofswanwick.co.uk | www.bestbuymowers.co.uk

Call Direct On: 01489 575242



Duncan Road, Swanwick, Southampton, SO31 1BD. (Opposite Swanwick Railway Station. Follow the signs to the station from Park Gate.)

Mrs G's Pilates



- Enhanced core strength
- Improved flexibility
- Greater postural control

- Freedom of movement
- Self awareness
- Sense of well being

Rooksbury Hall Tuesday 9:15-10:15, Wednesday 6:30-7:30pm.
Zoom Wednesday 8pm - Pilates for Runners, 1:1 & smaller groups

Contact Charlotte Graetz: (mob)07776221077 (hm)01329 835717 or charlottegraetz@yahoo.com



SOLENT DESIGN

- Design
- Artwork
- Stationery
- Leaflets
- Flyers
- Brochures
- Booklets
- Newsletters
- Labels
- Postcards
- Folders
- Posters
- Banners
- Vinyl
- Exhibition Displays



Tel: 01489 892344 • Email: sales@solentdesignstudio.com
www.solentdesignstudio.com

LBH

LANDSCAPE & GROUND WORKS Ltd

Free Estimates - Quality Work - Competitive Prices

**Brick Laying • Block Paving • Patios
Concreting • Drainage • Extensions
Garages • Decking • Fencing • Turfing**

All other aspects of Hard and Soft Landscaping
and Maintenance

KEVIN HALL 07808 496004

Tel: 01329 832169 Email: lbhkevin@tiscali.co.uk
www.lbhlandscapesandgroundworks.co.uk

City &
Guilds
NPTC

Pat Staples Interiors

INTERIOR DESIGN, FURNITURE & FURNISHINGS
Unit 3, Claylands Road, Bishop's Waltham SO32 1BH

Tel No: 01489 892626

E-mail: sales@patstaplesinteriors.co.uk

Trading locally since 1993



- Interior Design
- Measuring & Fitting Service
- Curtains & Blinds
- Carpets & Floorcovering
- Upholstery & Re-upholstery
- Wallpaper & Paint

www.patstaplesinteriors.co.uk

MJM

Plumbing & Heating

36 years experience in the plumbing & heating industry

- Natural gas, L.P.G and oil boilers installed
- Oil tanks installed & maintained
- Power flushing
- Full bathroom installations including wall & floor tiling
- Unvented hot water systems installed, serviced and maintained
- Grant Oil Boiler Approved Installer

NO
CALL OUT
CHARGE

NOW OFFERING 0% finance on all Vaillant boilers and products! Call for details

Tel: 01329 507712 Mob: 07773 385946
info@mjmplumbing.co.uk www.mjmplumbing.co.uk

Based in Wickham



Logs, Logs

Hardwood logs delivered for log burners or open fires.

Contact: John Newbury

07940 357 839

Woodlea Nurseries Seasoned
Hardwood, Durley

GAMBLIN CARS

PRIVATE HIRE

TAXI

FOR ALL YOUR TAXI REQUIREMENTS

TEL: 01489 89-33-33

AIRPORT SERVICES TO HEATHROW AND GATWICK

LOCAL & LONG DISTANCE

4-6 SEATER



Carpet Fayre Ltd



Checktrade.com www.locksheathcarpets.co.uk

Call us on: 01489 532530

Home Selection Service Available



SYCAMORE TREE SURGEONS

All aspects of tree work

**Pruning Surgery Felling Hedgecutting
Tree Stump Removal and Site Clearance
Approved contractors for local authorities**

FULLY INSURED

023 9223 0146

Mob: 07889 704449 David Farrington

30 YEARS EXPERIENCE

D.G. CLEEVE GENERAL BUILDER

- EXTENSIONS • ALTERATIONS • REPAIR & MAINTENANCE •
- DECORATING • PLUMBING •

NO JOB TOO SMALL

FOR ADVICE OR ESTIMATE

TELEPHONE (01329) 833677

MOBILE 07919 100074



Tudor

PEST CONTROL

Mandy Cleeve BSc.
07307 167 244

info@tudorpestcontrol.co.uk
www.tudorpestcontrol.co.uk

ABBEYTYRES

01489 896200

www.abbeytyres.co.uk

- TYRES • TRACKING • BALANCING
- PUNCTURES • SUSPENSION • BATTERIES
- BRAKES • EXHAUSTS

Mobile Fitting Service – at your home or office

Claylands House, Claylands Road
Bishop's Waltham SO32 1BH

email: info@abbeytyres.co.uk

Open: Mon-Fri 8.00-5.30, Sat 8.00-12.30

GENERAL TIRE



Wallops Wood
Droxford • Hampshire

Local Award Winning Self-Catering Accommodation

- 8 holiday cottages with 2, 3 or 4 en-suite bedrooms and excellent accessibility
- Indoor 13 x 6m heated pool and jacuzzi
- Individual enclosed gardens with hot tubs
- Stunning views, wood burners, free WiFi
- Ideal for family staying, birthdays and anniversaries

**Book with confidence
and unwind with us**

WALLOPS WOOD COTTAGES

01489 878888 wallopswoodcottages.co.uk
unwind@wallopswoodcottages.co.uk



RICHARD STEEL & PARTNERS

THE FAMILY OWNED
FUNERAL DIRECTORS



www.steelsfuneral.co.uk

BISHOP'S WALTHAM
The Gate House, Victoria Road,
Bishop's Waltham, SO32 1DJ
01489 892640

WINCHESTER
Alderman House, 12-14 City Road,
Winchester, SO23 8SD
01962 862333

Available 24 Hours

Newtown Soberton Infant School

We can offer a safe nurturing environment for your child this September 2021



A happy and safe place to learn, in a beautiful rural setting.

Please contact the school office on 01329 833161 or email adminoffice@newtownsoberton.hants.sch.uk

The Grooming Room Professional Dog Grooming



City & Guilds Qualified with distinction, over 10 years experience

Services Include:

Clipping • Scissoring • Hand Stripping • Wash & Groom • Nail Clipping

Based in Soberton Heath

Tel: 01329 835332 / 07909 575417

www.k9-4pawsandthegroomingroom.co.uk

Your local, independent and family owned funeral homes of Denmead, Wickham and Clanfield

South Downs
Funeral Service



24 hour, local and personal service
• Floristry service • Stonemasonry service
• No deposits required
Managing and Principle Funeral Director:
Mr Paul M Lee-Bapty DIP FD AFFIL RSH

Wickham Funeral Home
Tel: 01329 833920
13 The Square, Wickham PO17 5JG
Denmead Funeral Home
Tel: 02392 231567
The Old Post Office, Hambledon Road PO7 6NN

Clanfield Funeral Home
Tel: 02392 570239
43 Drift Road, PO0 8JS

www.southdownfuneralservice.com



Golden Charter
Funeral Plans



GS PEST CONTROL & GARDEN SERVICES

Fast effective pest control

Rabbits, Moles, Wasps, Rats, Bees, Mice
Fleas, Hornets, Moths, Flies, Squirrels,
Woodworm, Bedbugs, Foxes, Etc.
Bee specialist humane bee removals
Other services
Pest Prevention, Logs, Tree work, Garden Clearance

07453965542 george@gspestcontrol.net

CHAMBERLAINS

Family Solicitors

We can help you with a wide range of legal services including Residential Conveyancing, Commercial Property, Probate, Wills and Lasting Powers of Attorney

RED LION STREET (OFF HIGH STREET), BISHOPS WALTHAM

TEL: 01489 896141

info@chamberlainslaw.co.uk

Harpers Since 1885

The Aga & Central Heating Company

Oil & Gas Aga servicing, repairs and installations.

Oil & Gas boiler servicing, repairs and installations.

We also provide other services such as...

- Oil tank replacement, installation and relocations.
- LPG, natural Gas & Oil work.
- Chimney installations.
- Wood burning stoves.
- Trenchless watermains.
- Mains pressure hot water.
- Fuel tank spillage clearance.

Landlord safety certificates.

Free quotes and professional advice.

Fully qualified engineers.

Tel: (023) 92 388 300



Based in South Boarhunt

www.harpers-services.co.uk





SAFER CHIMNEYS

Member of National Association of Chimney Sweeps
NACS Certificates Issued.

“Highly Recommended” Local Chimney Sweep

Power Sweeping, Traditional Brushes,
Chimney Camera Surveys
Stoves, Open fires, Range Cookers

Less waiting time – 2 qualified sweeps

023 9247 6458 or 07733 343530
or 07847 466281

david@saferchimneys.co.uk

Proud members of

Checkatrade.com
Where reputation matters

www.saferchimneys.co.uk

TREE SERVICES

RESIDENTIAL & COMMERCIAL
HAMPSHIRE & SURROUNDING AREA

FOR MORE INFORMATION
www.wgstreeservices.co.uk

info@wgstreeservices.co.uk

or

CALL 07810 044 420



BULK BAGS

HARDWOOD | SOFTWOOD | KINDLING
FREE LOCAL DELIVERY

CALL 07810 044420
or

ORDER SECURELY ONLINE
www.wgskindling.co.uk

FOLLOW US



ICAEW
CHARTERED
ACCOUNTANTS

Chartered Accountants
& Registered Auditors

LOCAL INDEPENDENT ACCOUNTANTS AND
TAXATION ADVISORS

FREE INITIAL CONSULTATION

Full range of accountancy, auditing and taxation services

Business start up advice

Book-keeping and Payroll Services

Self-Assessment Returns

Detailed Fixed Cost Quotes

Visits to your Premises

Avalon House, Waltham Business Park,
Brickyard Road, Swanmore, Southampton,
SO32 2SA

Tel: 01489 896996 Fax: 01489 895255

Email: enquiries@butlerco-bw.co.uk

Website: www.butlerco-bw.co.uk



A BEAUTIFUL YOGA STUDIO IN WICKHAM

Providing authentic Yoga classes in a beautiful
& tranquil environment. Daytime & evening classes
available with ample free parking.

Visit birchtreeyoga.co.uk or call Karen on 01329 834511

Inkjet Printer Cartridges

EPSON® HEWLETT PACKARD etc.



Save Pounds on Compatible
and Original Printer
Cartridges Today

Excellent Price Free Delivery

Email Sales@inkking.co.uk Tel: 01489 877818

www.inkking.co.uk

DROXFORD ANTIQUES

The Old Bakery, High Street, Droxford SO32 3PA
01489 878800 mark@droxfordantiques.co.uk

Established for over 40 years.

Still buying and selling antiques of all descriptions, valuations and probate service.

We repair, restore and polish in our own workshops.

CURTAIN MAKING & ALTERATIONS

Stockists of Kate Forman, Vanessa Arbuthnott, Ada & Ina

We offer a full service from measuring to making beautiful hand sewn curtains, blinds and pelmets especially for you.

Please telephone Mark or Mary for free, professional and confidential help and advice.



THE JOINERS SHOP

Period Joinery of Every Description

Conservation Approved
Double Glazed
Box Sash Windows

(Genuine) Handmade Kitchens

Tel: 02392 814780
enquiries@thejoinershop.co.uk
www.thejoinershop.co.uk



Associate Member of the Hampshire
Buildings Preservation Trust Ltd

Associated Trades



Goss+Partners ARCHITECTURE



Meon Valley

Studio for Design, Planning
and Architecture Services

01489 307201

gossandpartners.co.uk

[/gossandpartners](https://www.facebook.com/gossandpartners)

[@gossandpartners](https://www.instagram.com/gossandpartners)

WHITE ROSE PLUMBING Russell Beaumont

Free quotation
No call out charge
No job too small
Family run local business
24 hour emergency service

Tel: **01489 893419** Mobile: **07843 586366**
Email: whiteroseplumb@googlemail.com

FAREHAM Creek VETS

32 East Street, Fareham PO16 0BY
www.farehamcreekvets.co.uk
Tel: 01329 280412

Local, independent small animal practice
Friendly, dedicated care for you and your pet
See the same vet at each visit
Close to Fareham town centre • Parking on site
24 Hours Emergency Service

Oliver Chimney Sweep



Experienced member of the Guild of Master Sweeps.
Insurance approved certificates issued with every sweep.
Professional, clean brush and vac system.

02392 787967

Email:

info@oliver-chimney-sweeps.co.uk



J.&D. HUMPHREY LTD

Plumbing and Heating Installations

**All aspects of plumbing,
heating and gas**

Bathrooms

**Boiler replacements,
breakdowns and servicing**

Tel: 01489 893620

Email: janddhumphrey@hotmail.com



CRAMER BESPOKE

CABINETRY | KITCHENS | FURNITURE

T: 02392 632222 M: 07805 040464

josh@cramerbespoke.com

*Why not read our glowing reviews from some
of the Meon Valley's most fabulous residents?*

www.cramerbespoke.com

WE'RE ON YOUR DOORSTEP

Having a local office means we're accessible, whether you need to make changes to your policy, make a claim or need financial advice.

We can help you with:

- Home Insurance
- Business Insurance
- Retirement Planning
- Car Insurance
- Commercial Vehicle Insurance
- Protection

NFU Mutual Financial Advisers advise on NFU Mutual products and selected products from specialist providers. We'll explain the services we offer and the charges. Financial advice is provided by NFU Mutual Select Investments Ltd.

For a real conversation about your insurance

Give us a call or pop in

NFU Mutual Winchester and Wickham, 3-5 Albany Business Centre,
Wickham Road, Fareham, Hampshire, PO17 5BD
01962 881 888



NFU Mutual
INSURANCE | PENSIONS | INVESTMENTS

Our Agents are appointed representatives of The National Farmers Union Mutual Insurance Society Limited (No. 11092), Registered in England. Registered Office: Tiddington Road, Stafford upon Avon, Warwickshire, CV17 7BJ. Authorised by the Prudential Regulation Authority and regulated by the Financial Conduct Authority and the Prudential Regulation Authority. A member of the Association of British Insurers.

RJS Fencing Contractors

Agricultural Fencing	Equestrian Fencing	Domestic Fencing
• Stock Fence	• Electric Fencing	• Closeboard
• Deer Fence	• Equifence	• Panel Fencing
• Post & Rail	• Post & Rail	• Trellis
• Stake & Rail	• Stake & Rail	• Picket Fencing
• Permanent	• Permanent	• Dog Proof Fencing
• Electric Fencing	• Electric Fencing	• Post & Rail

Call Richard on 07930 229649

Email: info@rjs-fencing.co.uk • www.rjs-fencing.co.uk



The Village Cattery – Soberton

*Superior holiday accommodation
for your feline friend*

Viewing welcome by appointment

Tel: 01489 877768

1 Glencoe Cottages, Long Road, Soberton, Hants SO32 3PG
www.villagecattery.co.uk

The best printers for miles - now only 1.7 miles from Soberton!

STUDIO 6 DESIGN & PRINT

Now offering high quality colour print at lower prices
Professional graphic design • Posters & building plans printed
Scanning service • Documents copied, printed & wire bound

Good, friendly service guaranteed!

www.studio-6.co.uk • print@studio-6.co.uk

Telephone: 01329 832933

Wallops Wood Farm, Sheardley Lane, Droxford SO32 3QY



Wasps, Fleas, Flies, Rats, Mice & Moles

Call Matthew

Tel: 01329 832159 Mobile: 07962 872063

BPCA Qualified

Insured

EXPERT TAX ADVICE WITH A HUMAN FACE FOR THE MEON VALLEY

WATCHING OUT FOR THE NEXT GENERATION

Is IHT a factor in making my Will? Is a Family Trust a good idea?

PROPERTY OR WORK OVERSEAS

How does it affect my tax if I live, work or have property abroad?

FOR ENTREPRENEURS

Am I the only one wondering whether it's worth all the aggro?

PERSONAL TAX

What is the best way to order my tax affairs, in full compliance with the law?

SELLING MY BUSINESS

How much tax will I pay? What is my business worth?

Nicholas Ridge
TAX EXPERTISE

Oakleaf, Ludwells Lane, Waltham Chase, Southampton, SO32 2NP
t: 01489 899102 e: nicholas@nicholasridgecta.co.uk
www.nicholasridgecta.co.uk

Computer Problems Solved

A qualified & experienced Computer Engineer who can efficiently solve your home and business computer needs.



For a friendly, no obligation quote call:

Chris Guénier: 01489 890738 or 07962 641796



<http://www.cps-ltd.org.uk>

info@computerproblemsolvedltd.co.uk

MARK & JUNE MASON

Husband and wife high quality painters and decorators. Period to modern properties, one room to a whole building. We work around your requirements.

www.masonspaint.co.uk

Dulux Select Decorators

Phone 01329 235847

Mobile 07973 162397

52 The Causeway, Fareham PO16 8RW

Ray Chandler

STATION GARAGE FAREHAM LTD

SERVICING, MECHANICAL & BODY REPAIRS,
WELDING, M.O.T. TESTING,
BREAKDOWN SERVICE

Tel: **01329 238451**

www.stationgaragefareham.co.uk

Unit 1, The Avenue, Fareham, Hants PO14 1NP

StorAway

Your local choice for storage



Secure Storage for Classic Cars,
Archived Documents and Personal Property.
Long or short term storage options available.

For ALL your storage needs
Contact StorAway on **01489 877988**
or www.storaway.co.uk

FREE RANGE EGGS

Available from:

The Old Buttery, High Street, Soberton.

Contact: Barry Tel: **01489 877389**

Email: barry.lawrence58@gmail.com



Agricultural Contractor

Hedge Trimming & Ditching
Paddock Maintenance & Topping
Groundworks, Topsoil, Roadways
Tractor & Trailer, Digger & Dumper Hire

Contact: jonwmitchell@hotmail.co.uk
or phone **07980 339893** or **023 9263 2840**



THE COUNTRY HOUSE COMPANY

Sales | Lettings | Management

Selling, Letting & Managing properties
in the parish of Soberton



02392 632 275



countryhousecompany.co.uk

A WARM WELCOME AWAITS
from Allan, Vicky and their team at

The White Lion

School Hill, Soberton

Beer Garden, Functions,
Home Cooking and Local Beers

now offering

BED & BREAKFAST

Recently created 4 double rooms each
beautifully appointed with en suite.

Luxury accommodation on
your doorstep!

Telephone: 01489 877346

info@thewhitelionsoberton.co.uk

www.thewhitelionsoberton.com



Specialist in all types of mowers and garden machinery

- Service and repairs on site
- Collection & delivery
- Competitive rates
- Rotary blades & hedge cutter sharpening on site
- Over 10 years experience

Call James on 077 83 93 72 12 or 01489 878085 • jimmeonvalleymowers@gmail.com



Whatever you want to store... ...for whatever reason

– house sale and purchase not coinciding, travelling, house building work, paperwork overload or just 'de-cluttering' to sell your house more quickly
– we offer a friendly and flexible local self-storage service near Newtown.

With competitive rates, secure storage all on one level and hassle-free 24/7 access, contact us now!

02392 384888
www.barn-store.co.uk



HAMBLEDON CARS

PRIVATE TAXI SERVICE

Superior Air Conditioned Cars
8 Seater Minibus
Airports, Stations & Cruise Transfers
Theatre, Shopping, Business
& Local Travel

Steve & Tracey Eames

M: 07766 027 301

W: 02392 632 375

hambledon-cars@hotmail.co.uk

www.hambledoncars.co.uk

West Street Hambleton Hampshire

Mushroom Catering

**Bringing Masterchef
to the Meon Valley**

Masterchef contestant Gill Holland provides bespoke menus that give your special occasion the wow factor! Traditional British fare, a Thai feast or a Mediterranean mezze, canapés at a drinks party to full wedding packages.

Whatever your event give Gill a call on the contact details below:

www.mushroom-club.co.uk
West Down Cottage, Chalk Hill,
Soberton, SO32 3PH
07879 696495, 01489 876741



J. Gordon

Forestry & Arboriculture Ltd

- Crown Reduction/Re-shaping • Thinning/Dead Wooding • Skilled Tree Removal • Hedges
- Plantation Maintenance • Tree Planting • Fencing • Woodland Management • Stump Grinding

Professional Qualifications • Insured in all aspects of forestry and tree surgery

For a personal and caring service contact Joe Gordon

24 HOUR EMERGENCY CALL-OUT • FREE QUOTATIONS

Hambledon 023 9263 2418 Mobile 07712 808 081 www.treedocjoe.co.uk



Taylor's Garage
Droxford
Hampshire SO32 3QL



Tel: 01489 877433

CAR and MOTORCYCLE MOTs

Service and repair to cars
light commercials and horse trailers

Air conditioning - service & repair

Competitive prices on
tyres batteries and exhausts

Collection & delivery or loan car available
subject to availability

BUY WITH CONFIDENCE
Trading Standards Approved Trader

Cleaner Chimneys

REGISTERED CHIMNEY SWEEPS

Certificates Issued, HETAS approved
Buy with Confidence Approved Trader
Stoves, ranges, open fires swept
Traditional and Power Sweeping
CCTV surveys and tar reduction services

Paul and Elly Clements 01489 578541 or 07540 841022

www.cleanerchimneys.co.uk

CORE STRENGTH
FLEXIBILITY
FLAT STOMACH
JOINT MOBILITY
REDUCED STRESS
TONING
IMPROVED POSTURE

PILATES

PILATES

CARRIE MANDLEY RGN
PILATES INSTRUCTOR
PHONE 07854 413352

R.A. Redman

PLUMBING, HEATING & SOLAR ENGINEERS

Family run business • Free quotations
Gas, LPG and oil boiler servicing, installation and breakdowns
Bathrooms, kitchens and underfloor heating
Powerflushes • Disability installations



02380 476340 / 07590 229935

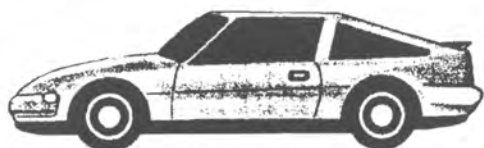
www.raredman.co.uk • contact@raredman.co.uk



WOODPECKERS, ALLINGTON LANE, WEST END, SOUTHAMPTON, HAMPSHIRE SO30 3HP

Andrews Autosource

Where Good Cars Cost Less



We specialise in Low Mileage, Service
History Cars at Reasonable Prices

Find-a-car service

Free advice on selling your current car,
Nice cars bought for cash

For an up to date stock list, please visit
www.andrews-autosource.co.uk

Or call at:

The Forge Garage Droxford
Telephone 01489 878 879

BOWMAN ALES LTD

TRY OUR AWARD WINNING ALES



Our beers are
available in
bottles,
bags-in-boxes or
casks, all direct
from the brewery



01489 878 110
info@bowman-ales.com www.bowman-ales.com

WELLER PATRICK

01489 893555
www.wellerpatrick.co.uk

Please call to arrange a
Free Valuation of your
Property

We have buyers waiting for
properties in Soberton and
the Meon Valley

Experienced local team. Expert advice.
Friendly and personal service.
Detailed knowledge of the Meon Valley.

HURRICANE FARM



Breeders of rare breed poultry
Hatching Eggs, Chicks, POL Hens
Breeders of Pigs Glos old spots
Tamworths and Kune Kune

01489 878218

LOCAL FARRIER

(Soberton Based)

David Povey Dip WCF

For:
Hot & Cold Shoeing
Remedial Shoeing

Established 1985
01489 878218



M & S LOCKE & SON LTD

PLASTERING & CERAMIC TILING CONTRACTORS

Specialising in:

- All aspects of plastering
- All aspects of wall & floor tiling
- Interior stone flooring
- Exterior stone patios
- Full bathroom refurbishments

Family run business with over 30 years experience, we offer a reliable, friendly quality service.

For a free quotation/advice please call Dean on
Mobile: 07712 894119/Home: 01489 877199



The all-round
glazing specialists



Call 01730 233264

- Free no obligation quotation and no call out charge
- UPVC windows, doors and composite doors
- bi-fold and patio doors
- mirrors, showers screens, splash-backs, balustrades
- replacement of misted double glazed units
- traditional putty glazing and bespoke glazing
- single glazing, safety glass

sales@leydeneglassandglazing.co.uk

www.leydeneglassandglazing.co.uk

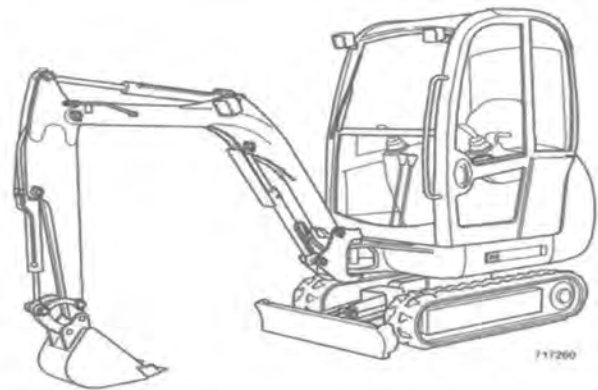
Unit 2 Amey Industrial Estate, Petersfield, GU32 3AN

Cheekatrade.com
Where reputation matters

KS Groundworks

Local General Builders & Ground
Maintenance, Hardscaping, Drives,
Slabs, etc.

Over 30 years experience.



Tel: 07732 753562 Email: kym.slater@gmail.com



Ben Tibbetts Electrical Ltd

Contact Details

City &
Guilts

- 01489 278792
- 07828 403185
- bte.enquiries@gmail.com

Your local electrician
No job too small
All work fully certified



LOCAL BARRISTERS

AVAILABLE DIRECT TO THE PUBLIC

Disputes, Contract and
Business Advice
Wills and Powers of Attorney
Litigation

First 20 minute consultation free

HD

HACKETT & DABBS

info@hackettdabbs.co.uk

Telephone: 023 93 878797

www.hackettdabbs.co.uk



REL

BOARHUNT LTD

MOT • Servicing • Repairs

Free Courtesy Cars



- MOT class 4, 5 and 7
- Free collection and delivery service to your chosen destination
- Approved by all major suppliers and leasing companies



Storage



Garage Services



Rescue & Recovery



Haulage



Truck Fleet & Van Maintenance Services

Please call us on **01329 282999**

www.boarhunt.co.uk



Whether you're thinking of moving or just need to know what's happening to the value of your home, call us for a market appraisal, absolutely free and without any obligation whatsoever.

BR BYRNE RUNCIMAN

ESTATE & LETTING AGENTS

Ben Runciman · Rona Thurston

The Square, Wickham, Hampshire PO17 5JT - Telephone: 01329 834579

Email: info@byrnerunciman.co.uk - www.byrnerunciman.co.uk

DM

Window Cleaning



Experienced Local Window Cleaners

Contact: David Maycock

david@dmaycock.co.uk

www.dmwindowcleaning.com

Tel: 01489 891025 - 07815 698140



G. RIXON LTD.

ELECTRICAL PLUMBING AND HEATING ENGINEERS



01329 834600

www.g-rixon-ltd.co.uk

enquiries@g-rixon-ltd.co.uk

OIL, LPG AND NATURAL GAS FIRED BOILERS
WORCESTER BOSCH ACCREDITED INSTALLERS
DISABLED BATHROOM SPECIALISTS

G. RIXON LTD. Wynot Heath Road Soberton Hampshire SO32 3PG

R & G GAMBLIN

Extension Alteration Renovation

Planning work

Bricklaying.
Civil Engineering.
UPVC Windows & Doors.
Plastic Fascia & Soffit.
Concrete.
Loft Conversion.
Roofing Pitch & Flat.
Painting.
Conservatories.

Digger Hire.
Drainage.
Fencing.
Plastering.
Driveways.
Plumbing.
Garages.
Carpentry.
Electrics.

For Free Estimates please phone
Rob 01489 - 891801

ECS
Easy Clean Services

Contact Us Now!
Tel: 01489 896 903

CESSPIT / SEPTIC TANK EMPTYING

TANK EMPTYING

- Cesspits
- Septic Tanks
- Interceptors
- Grease Traps
- Treatment plants
- Pump Stations



SERVICING

- All Treatment Plants
- Pump Sets
- Pumping Stations
- Water Pumps

PUMP and PARTS

- Air Blowers - All Makes
- Submersible pumps
- Spares and accessories
- Shop online or collect

DRAINAGE SERVICES

- Root Cutting
- CCTV Surveys
- Blocked Drains (Jetting/Rodding)

info@easycleanservices.co.uk
www.easycleanservices.co.uk



OLIVERS

PAINTERS & DECORATORS

Since 1992

Domestic & Commercial

External & Internal Decorating

We Pride Ourselves on Quality

02392 787967

Or

07889488010

info@oliverspainting.co.uk

D.J. SCOTT
GARDEN MACHINERY

SALES & REPAIRS

Wheely Down Garages
Warnford, Nr. Southampton
Hampshire SO32 3LG

www.dj-scott.com

Telephone/Fax: 01730 829207



HORTON
BARNs

TIMBER AND OAK FRAMED
HOUSES AND BUILDINGS OF
DISTINCTION

BESPOKE OAK FRAME GARAGES
AND BARNs

TRADITIONAL TIMBER FRAME
HOUSES MADE TO THE
HIGHEST QUALITY

CONTACT OUR SALES TEAM TO
DISCUSS YOUR PROJECT

01489 899033

info@hortonbarns.co.uk

www.hortonbarns.co.uk



TJ

CHIMNEY SWEEPS

TEL: 02392 002872

MOB: 07950 145494

COMPETENT, CLEAN & RELIABLE

WWW.TJCHIMNEYSWEEPS.CO.UK

FULLY INSURED & REGISTERED WITH THE INSTITUTE OF
CHIMNEY SWEEPS.

SEE US ON CHECKATRADE.COM

**Come and join the
driving team at**

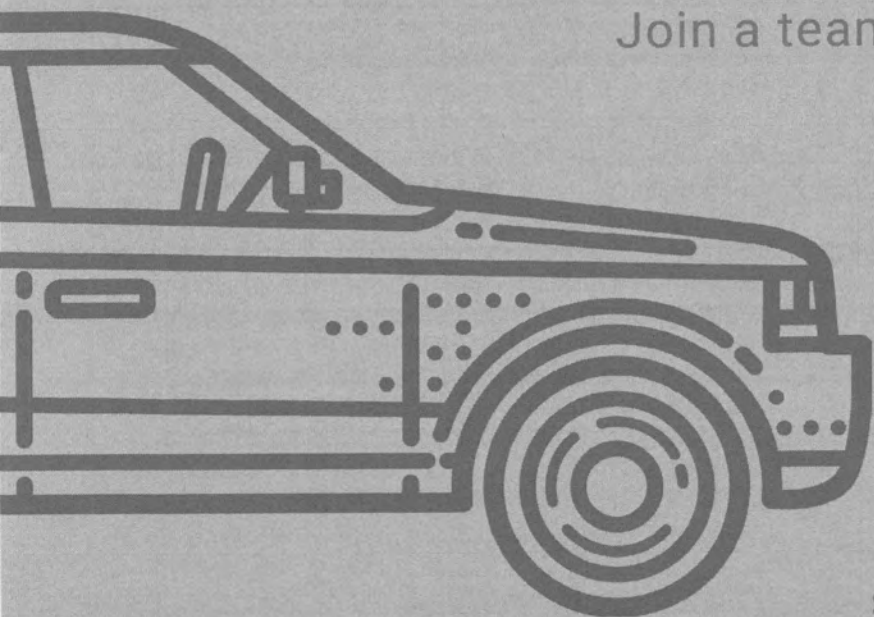
Soberton and Newtown Good Neighbours Group

We have been taking local people to
doctors, dentist and hospital appointments
for over 40 years

All our volunteer drivers are
reimbursed for their mileage and
decide which journeys they can offer

Most visits take less than an hour

Join a team making a real difference
in the community.



To find out more
call Sue on 01489 877282
or Phil on 02392 632551

soberton.org/goodneighbours

Local History...Tennis and Strawberries and other ramblings

Wimbledon may be over for another year and the joy of the first of the years strawberries may have faded but the impact of both tennis and strawberries on our parish is largely forgotten.

It is not known when the first tennis court appeared in Soberton but one would assume that it was originally confined to the 'new gentry'. The original upper classes who made Soberton their home, or temporary home, were more interested in the excellent opportunities the area provided for hunting, shooting and fishing, especially seen as male pursuits. In the mid-19th century croquet became a popular summer sport for all the family however by the end of the century lawn tennis began to replace croquet and the first lawn tennis tournament was held at the All England Croquet and Tennis Club.



One supposes that neither sport had much impact on the mainly agricultural parish of Soberton although changes were afoot. It was in the late 1890's that Col. Charles Brome Bashford, Aide-de-Camp to Queen Victoria replaced the old family house with Soberton Towers and surely he would have planned for tennis in the expectation that the future Edward VII and his entourage might visit. The opening in 1903 of the Meon Valley Railway, with its link to London, also brought a different class of resident to the village and they may have had their own private tennis courts. But that is pure speculation.

Tennis was very popular throughout the country during the 1930's and the success of players such as Don Budge and Fred Perry helped to widen the interest. It was at his time that the Restville Tennis club was formed. Badminton had been played by members of Rookesbury Hall, possibly as a result of ladies being allowed membership in 1926, and it seems likely that a move to play tennis was initiated there. The tennis club was also affiliated to the hall but several people have told the local history society that the club owed its existence to Mr. John Lay.

John Lay was a successful builder in Portsmouth but often spent his weekends with his brother at Clamp Kiln Farm. Later he built a pair of houses on Church Road facing the road to St. Martin's Corner and Rudley Mill, possibly for his retirement. The tennis courts were on the Southwick side of Restville, the house he occupied, hence Restville Tennis Club. It was supplied with its own drinking water fountain no doubt fed from Mr. Lay's nearby artesian well, long before the village had running water supplied.

The tennis club supported by Mr. and Mrs. John Lay and Miss Lobb, the assistant school teacher,

produced several successful teams. A post war photograph of the players is dominated by members of the Crook family. A date for the winding up of the tennis club is not known but the court with its surrounding wire netting was still available for use in the late 1960's. However, this was dependent upon a nearby resident being willing to be the key holder (and presumably the net) and the players behaving responsibly. The same problems which were met and not overcome a decade or so later when a tennis court was proposed on the recreation ground. Tennis was once again relegated to private tennis courts but through the generosity of some owners Soberton did run its own mini Wimbledon. Our society has been told that a former All India Tennis champion lived in Soberton

As for strawberries, they were very much part of our local economy during the 19th and early 20th century. When they actually became a commercial crop is not known. There was no mention of any 'market garden' crops in a report on the agriculture of the parish in 1799. Sheep rearing and corn crops were the principal activities in the chalk areas and cows were said to be numerous in the proximity of the Forest of Bere. Our records first mention strawberries in connection with the new settlement at Hundred Acres. This came about because William Garnier wanted to build a park around his new house at Rookesbury and there were squatters in the area. In order to remove this blot on the landscape he selected an area of perhaps sixty acres, rather than one hundred, where he had 24 houses erected in the 1840's. But first the timber had to be cleared from the site and the ground cleared. Each of the occupants was to have an acre of land at an annual rent of £5 but they had the opportunity to take on additional land.



This area was very sheltered, still surrounded by plantations on three sides and the fourth, the southern side, was open with a general trend to slope towards the south and open to the sun. It also had the advantage that most of the ground lay over Bracklesham beds of gravel giving the area a huge advantage for growing vegetables and early fruit, especially strawberries, for which the area became well known. Queen Victoria is said to have been the recipient of Hundred Acre strawberries and the two most popular early varieties grown were 'British Queen' and 'Sir Joseph Paxton'. They were known as 'Joes' and 'Melters' locally. The strawberries, bound for the London market, were initially loaded at Fareham but with the opening of the Meon Valley Line they were loaded at Wickham and could be in London within a few hours. The cutting down of the surrounding plantations during WWI took away those

extra few days advantage that Hundred Acres had enjoyed over other areas.

Strawberry growing was not confined just to Hundred Acres it spread across the area which had formerly been heath or common land and was enclosed in 1867 together with the land which was 'allotted' when the Forest of Bere was 'disafforested' in 1810. The allotments were intended as compensation for villagers who had formerly had rights to graze animals in the forest. To actually make the necessary claim was probably beyond many of the villagers, who would have had little or no education, and so the allotments went on the market. It seems that brought new people to the area who built new houses. Did they perceive a new town developing because it seems about this time that the name Newtown came into use. Surely one of the older names associated with the area, such as Charleswood, would have been better. Then later we find Midville and Restville being used and one might question why was the church and the school are situated away from the heart of Newtown.

The importance of fruit growing can be seen in the log books of Newtown School. From 1863, the very first year it became compulsory to keep a school log book, fruit gathering is given as a reason for absenteeism. From 1895 up to 1914 the school

began its summer holiday to coincide with the strawberry harvest. The school was managed by the local School Managers rather than a county agency. Grants were made to the school according to results and attendance so any large scale absenteeism had to be recorded in the school log book.

Fruit and other market garden crops remained important to the area well into the 20th century but had declined by the 1960's. The society has been told of people walking to Portsmouth with their produce. Those who could afford a pony and cart and later a motor lorry, would help by taking their neighbour's wares to market. Coming to the village in the 1960's I questioned why daffodils were growing by the hedgerows of several small fields. I was told that they were grown around the outside of the fields to provide an early cash crop and possibly there was an advantage of the gap between hedge and fruit.

Please does anyone have a photograph showing the Restville Tennis Court that we might borrow to copy and include in our archives. Indeed, any photograph of buildings now disappeared or undergone major changes would be very welcome.

Jumble Trail update

The sun shone on the 17 sellers on June 13th! One of the first events as we started to exit COVID restrictions - it was great to see members of the community who had not been seen during lockdown and, also, meet new people.

A big thanks to everyone who supported the day. We had sellers in Newtown, Soberton Heath and Soberton. Both Soberton Village Hall and Rookesbury Hall kindly gave permission for their car parks to be used by buyers on the day. I advertised the event, mainly on Facebook, sharing the event on several pages with a combined readership of 7000 people. I am also grateful to the Parish magazine for advertising the event.

The feedback from sellers was mixed

The positives, for me, were the civilised start time (10am) and the convenience of selling from outside your own home (making beverages, lunch, toilet facilities and packing up, very easy).

Attendance at stalls in roads where there were several traders was brisk and far better supported than in roads with a sole vendor, which was below

expectation. In Church Road, Newtown there were five households close by selling and, by all accounts, had a good result.

Some sellers asked if they could use the village hall car parks to sell from in future if they were in a remote location. I will see if this is possible for any future event but there may be reasons like cost and insurance that may render this as unpractical and would turn the event into a car boot rather than jumble trail.

I will look to improve on maps for a future event - we are such a large geographical area that the three maps produced were not easy for buyers to navigate. I would also ensure that all sellers have a list of participating address to distribute on the day. Our area is not renowned for its phone coverage so although this information was all on Facebook it was not easy to access on the day.

I will be asking next Spring if people would like another jumble trail and will react to the response accordingly.

Cath Gregory

Sourdough Surgery #3

Proof Positive – using the three 'T's to get the perfect rise.

Following recipes is great – it gives you the confidence that you have exactly the right amount of ingredients and are combining them in exactly the right sequence. But when the recipe then says 'leave to proof for an hour, or until well risen', you're getting into uncertain territory. Do you stick religiously to the 60 minutes before popping your loaf into the oven, or are you still fretting after an hour and a half over whether it has risen quite far enough?

With our wonderfully temperamental British climate, the ability to maintain a constant temperature (the first 'T') in our kitchens is a challenge. Yeast activity is at its peak between 75 to 95°F (24 to 36°C) and this is usually the temperature range the recipes assume when recommending proofing times. You could use an airing cupboard, or an oven at its lowest setting to stay within this range. But what is this isn't an option? Or what if you want to leave your dough for longer than the hour.

This is where the second 'T' comes in – the Time it takes to reach optimal rise is dependent on ambient temperature. So, if your proofing environment is cooler, it will take longer, if it's higher it will prove quicker (too high and it will kill the yeast). In fact, a long, cold proof - say in the fridge overnight, can result in a loaf that is tastier, and fits more easily into your schedule.

'So how do I know when my dough is fully proofed if I can't control the temperature?' I hear you say. Enter the third 'T' – the touch test. Gently press a finger into the top of your dough to make a shallow indentation. If the hollow completely springs back when you take your finger away, the yeast is still active and you need to give the dough a little longer. If the indentation shows no spring back, chances are you have over-proofed your loaf. What you should be looking for is the indentation to spring back about half way – that's the time to get your loaf into the oven.

By the way this test works just as well with yeasted breads as with sourdough.



Happy baking, and if you would be interested in bread workshops let me know as I'll be starting these in the Autumn (barring further restrictions).

Jeremy Miles runs Borderlands Bakehouse, an artisan micro bakery in Brockbridge.

borderlandsbakehouse@gmail.com

Soberton's Norman Chapman – Rotary Club of Fareham President

The Rotary Club of Fareham welcomed incoming President Norman Chapman at a Handover ceremony on Thursday 24th June 2021. This year the Rotary Club of Fareham celebrates the 75th year of its Charter.

President Norman has chosen to support two main charities in 2021-2022 and these will include Hampshire based *Hounds for Heroes* that provide specially trained assistance dogs to injured and disabled men and women of the UK Armed Forces and the Emergency Services.

In addition, the Club will continue to support international charity *Global Sight Solutions* that raise awareness and funds to combat blindness and cataracts for those in the developing world. Members have already begun to assist this charity and now, with a further year of help from the Club, it is hoped a real difference can be made to those who need it most.



Recently, FODS (Friends of Droxford School PTFA) held a successful 'Silent Auction' and take away curry night to help raise monies for Droxford Junior School. Over £600 was raised and the committee are very grateful to all who supported the event – including The White Horse Inn who provided the food. A big thank you to those who sponsored: Meon Valley Butchers; The Roebuck Inn; Greens Wine Bar and Restaurant; Sealicious; Body Shop; Durley House Pool and The Baker's Arms, Droxford.

FODS' major fundraising focus is supporting the school's Landscape Strategy Plan, which is designed to develop the outdoor space for learning, play and wellbeing for all. Much has been accomplished by the school over the past few years already and there are more exciting projects to achieve within the plan such as: natural play area; outdoor classroom; planting of a nature corridor; planting pollinating plants and spring bulbs all around the school grounds; developing the Den Building resources and constructing an Amphitheatre beside the playground and the school field.

The children in the school have formed a 'Wilder Committee' with the guidance of the Hampshire and Isle of Wight Wildlife trust (Craig Whitelock from HIOWWT photos right) to identify action plans to improve habits in the school grounds. This includes planting; building bug hotels; bee boxes; insect houses and bird boxes as well as engaging the wider school community to help. The children have also been involved in applying for a grant to Learning Through landscapes to help with this project. We find out in Autumn 2021 if they have been successful in getting funds and support.



During the summer holidays, we are planning to install a natural play area (part of the Landscape Strategy Plan) which will look very much like the picture below, funded by events led by the children and FODS this year.



Hopefully we can share more detail in the Autumn term.

Have a great summer!

Mr Dampier
Headteacher

Soberton Parish Council needs a Logo and we need your help!

The Parish Council is redesigning our website and would like a logo for the new home page.

The Council has never owned a logo and is really keen to create one which identifies with the Soberton Parish (which includes all of the villages).

We are looking for something which reflects our community and has a simple but relevant theme. This area has some interesting history which may be included but we would like your entry to be your own ideas.

You can submit your entry either as a drawing or as a computer file but please make sure that it is no smaller than 6cm wide x 4cm high – but bigger is fine.

Entries will be divided into the two classes below and there will be a prize for each class

Junior – Under 16 years

Senior – Over 16 years

Please ensure you mark your entry with the relevant class.

The closing Date is **30th August 2021** – please send your entry design along with your name, address and contact telephone number either via email Clerk@soberton.org or post to Oakdene House, High Street, Soberton, SO32 3PN

Soberton Parish Council reserve the right not to use the winning entry exactly as submitted but will certainly include some aspects in its final logo. The Parish Council will own the copyright to any logo used on its website and other documents.



Hidden away – Hampshire & Isle of Wight Wildlife Trust



Hampshire & Isle of Wight Wildlife Trust
strives to create a better future for wildlife
and wild places in our two counties.

Help wildlife where you live
www.hiwwt.org.uk

The summer brings with it a profusion of wildlife in many of the wilder areas of the countryside. From blooming wildflowers to the sounds of birdsong, there is so much going on.

But many of our mammalian friends are out of sight out of mind, especially in the summer as they hide away in the dense vegetation. This week, we take a look at what some of our furry friends are up to at this time of year.

Feeding up Hazel dormice might be most familiar as an autumnal species, getting ready to bed down for winter. They wake in spring, and from then on, it's a race to pile on the pounds for the colder months. During summer, they are at their most active, clambering around hedges and trees, looking for their favourite food. Already cute, one of the biggest components of their summer diet is flowers. Honeysuckle and bramble flowers make up a significant proportion of their diet before they turn to nuts in the autumn.

Up in the air Bats are giving birth at this time of year, usually to a single pup which the mothers nurse in a maternity roost. The young bats take about four weeks before they start to learn to fly, growing quickly in that time. Some will still be suckling from mum until August. To help keep a steady supply of milk for their young, the adult bats must eat thousands of tiny insects every night!

Long evenings Many of Britain's larger mammals are either nocturnal or crepuscular (meaning they come out at dusk, in twilight). The long summer evenings mean a much better chance of spotting this species compared to the winter. Badgers are no exception. Their cubs will be around four months old now and making the most of this time to play. By July, most will be weaned and starting to become independent. The cubs will roll around with each other, play fighting and chasing their siblings around the sett.

Small mammals, like mice and voles, are essential food sources for wildlife higher up the food chain. Healthy habitats contain plenty of food for species low down in the food chain. Increases in their populations lead to increases in predators like large mammals and birds of prey. Creating interlinked corridors for mammals to breed and hunt in is vital and restoring and conserving these habitats is at the heart of the Trust's work.

SOBERTON PARISH COUNCIL

including Newtown, One Hundred Acres, Hoegate, Soberton Heath, Kingsmead, Brockbridge and Soberton

Design Statement (DS) review

The meeting for those interested in assisting in pulling together the Design Statement following the questionnaire earlier this year have been contacted directly and asked to attend a workshop which is to be held in September. I should add that the programme for completion of the working draft will be at the end of 2021 with possible adoption in early 2022.

Recreation Ground and Children's Play area

The Children's play area is fully functional for the summer holidays having been inspected. The Recreation ground football pitch is being worked on however damage was worse than initially thought, bare areas will be seeded in September. We still have some badger damage outside the fenced area which is to be repaired. Planned drainage works which were put off last year due to the pandemic will be carried out later this summer/early autumn, those affected who back onto the recreation ground will be contacted directly ahead of work commencing.

Other Matters in brief:

The Parish Council has organised a clinic with our local PCSO (Police Community Support Officer) Gracie Wetherill and our CSO (Community Safety Officer) Gary for Saturday 23rd October. More details will be posted on the Parish Council Facebook page and website.

Traffic through the villages, the SID flashing sign locations have been approved by HCC and posts are being erected, the SID will appear in various locations later this summer. The PC has commissioned a traffic speed survey, a series of units will be located throughout the Parish and set during September/October. The data collected will be shared with HCC Highways which will provide a true record of car speeds at a given time.

Hedgerows and Ditches, we remind all land owners of their responsibility to maintain roadside hedges and ditches which cross their land. Roadside hedges should be cut back allow good forward sightlines making our roads safer. To avoid ponding from blocked ditches, if we all act now, we can limit blocked watercourses during the winter months.

Please report any **drainage concerns** to the Parish Clerk and we can assist with coordination with the appropriate authorities.

John Hyland
Chairman

Planning Applications **17th July 2021** (correct at time of going to print)

21/01493/HOU 9 Hundred Acres, Wickham PO17 6JB
Proposed garage/store in rear residential garden.

21/03153/HOUS Innisfail, Station Road
Single storey side and rear extensions

Planning Decisions

21/00898/FUL Ingoldfield Farm, Whaysai Barn, Ingoldfield Lane
Erection of stable building to house 2 stables (one for grazing sheep, the second a tack room and hay store, plus a tractor shed. Change of use of land to residential. Erection of a greenhouse. (Amended proposal)
Application permitted

SDNP/20/04774/HOUS Staddlestones, High Street, Soberton, Southampton, Hampshire, SO32 3PN
(Retrospective) Construction of 2no. Outbuildings, shed & decking

LA Committee Decision

This application may require to be recorded on the Local Land Charges Register

This application is liable for Community Infrastructure Levy and associated details will require to be recorded on the Local Land Charges Register. If you require any additional information regarding this, please contact CIL@southdowns.gov.uk or tel: 01730 814810.

WINCHESTER CITY COUNCILLOR NEWS

(CENTRAL MEON VALLEY)

Intro from Vicki - Throwing off the shackles of political alignment has allowed me to think more freely and concentrate on matters that affect not just individuals, but everyone. Too often, in my view, problems are overlooked and often left unresolved with many preferring to defend the status quo rather than putting in the time and effort so often needed to help an individual with an issue that is affecting their health and happiness. Everyone in need deserves the support of the community around them, and constructive liaison to get the various agencies talking to each other often delivers a solution.

Attitudes change slowly but the last two years have shown us all that our comfortable situation can change quickly and that we must adapt. The health and wellbeing of our community is always my top priority but climate change and increasing pressure for land use in the countryside is putting increasing pressure on wildlife. Creatures of all sizes are facing challenges. So please think twice about the impact of changes you may be planning.

A precious resource for birds, small mammals and insects is hedgerow, so let it flourish to support nesting birds and butterfly populations, so consider the impact before ripping out a hedge that is supporting vital biodiversity, which as we are told, the UK is lacking compared to other countries. Installing close board or wire fencing will prevent animals from using their long-established routes in search of food and shelter, and fencing can trap animals on roads with an inevitable increase in road kill. Driving more slowly also reduces roadkill of birds as well as mammals.

While our garden blooms may still look as lovely as ever, we are all noticing the reduction in insect life - how many 'splats' on your car after a long trip compared to in decades past? Pesticides and climate change are taking their toll so I hope that each will make a contribution to living with nature in our gardens and not shut it out.

Local Plan Update

Currently analysing the comments that have been submitted.

- Finalising the work on the sites that were put forward in 2020 SHELAA and from the recent 201 Call for Sites.
- WCC will be engaging with the Parish Council and finalised the work on the 2020/2021 SHELAA hopefully by September.
- The timetable going forward is being discussed this month at Cabinet.

The next steps

- Local Plan Design workshop to be set to discuss how well existing design policies, SPD and documents including Local Area Design Statements and Village Design Statements work now.
- What policies are not working effectively in terms of delivery of the right design outcomes and identifying any gaps in design policies in the current Local Plan and supporting documents.
- Spatial dimension – separate follow-on workshops will be arranged to concentrate on the spatial matters focussing on topics/themes to discuss and reach consensus on what opportunities there are at a more localised level to improve the district.

Fly Tipping

WCC continues to tackle fly-tipping. 900 cases already reported this year, so Winchester City Council is installing CCTV cameras around the district to tackle the problem we face, on a rolling programme installed in various 'hot spots' across the district.

The council has acted against 14 offenders in the past six months and despite court proceedings being suspended due to COVID-19 restrictions, cases have resumed. They're being heard at Guildhall Winchester which has been used as an HMCTS court facility since January 2021.

The council took action against an offender who appeared before Portsmouth Magistrates on 1 June 2021 for fly tipping in our Parish. They faced charges of failing to obtain a waste transfer note. The case was investigated by the city council's Neighbourhood Services team. The defendant was ordered to pay fines in the region of £2K.

Not only is fly tipping illegal but it is also having a detrimental impact on wildlife and biodiversity and the health and wellbeing of our community. Winchester City Council prosecutes whenever they have the evidence.

If you find illegally dumped waste with a sticker attached, it means that the council is already aware, and will arrange for disposal as soon as possible. Help us to tackle fly-tipping – if you find any rubbish and there is no sticker on it please report it to www.winchester.gov.uk, on the Your Winchester App or by phoning 0300 300 0013.

Virtual High Streets to be launched across Winchester district

Winchester City Council is continuing its support of independent shops and businesses across the district by signing up to the online shopping and ordering platform, ShopAppy.com. Businesses are being invited to register to the website for free, which will provide them with further opportunities to promote their services and sell products to local customers from the comfort of their own home.

The council and ShopAppy is offering free membership to all businesses and community organisations in the district for the first 12 months, enabling them to reach a wider pool of customers and extending their online visibility. The platform allows customers to browse virtual shop windows, book appointments and events as well as order products from local stores using a delivery or 'click and collect' service. Funding from the Reopening High Streets Safely Fund, which was launched by the Government and the European Regional Development Fund (ERDF) last year, has enabled the council to cover the first six months membership for all independent

organisations in the district and ShopAppy have matched that, extending the offer to the full 12 months.

The Visitor Information Centre, operated by the City Council along with more and more businesses are joining every day and adding their products and services to their dedicated area in preparation for a public launch. To see who has signed up so far and to register on the site businesses should visit shopappy.com and then select 'sign up' or contact Jane Stewart at shoplocal@shopappy.com. Once registered, businesses can quickly populate the website with goods and services on their town's page with assistance provided by the ShopAppy.com team.

Our Councillors

Frank Pearson	Fpearson@winchester.gov.uk
Linda Gemmell	LGemmell@winchester.gov.uk
Vicki Weston	Vweston@winchester.gov.uk

Vicki's Biodiversity tip for this month

Save the Bees

There are plenty of environmental initiatives you can take up, but one of the most important is the need to save our bees. These little beasts are vital to pollinating the Earth's vibrant ecosystem, but they have been dying out due to the use of pesticides. You can help matters by purchasing Organic Honey (to support natural bee keeping practices), or donate to bee charities to help promote their wellbeing

Check out the Bee Conservation Trust web site

[Bumblebee Conservation Trust](https://www.bumblebeeconservation.org/) <https://www.bumblebeeconservation.org/>



Will you pledge to Bee the Change?

You can pledge to 'Bee the Change' in 2021 and help your local bumblebees. Make your pledge today!



Dear Resident

Despite the uncertainties of English summer weather, I have been visiting local communities and undertaking street surgeries. I am very grateful to those of you who have taken the time to stop and chat with me and I've found these on-the-spot discussions very interesting and extremely helpful. Thank you for your feedback but don't be surprised if I turn up in your area or on your doorstep one day!

In this report I especially want to draw attention to small sums of funding which are available to community groups for community projects. If I don't spend my small budget of £8,000 over the coming year I have to return it, and I don't want to do that! However, please remember the criteria and process when applying, see the paragraph below and the conditions of the grant. Grants are usually for small sums of not more than £1,000 although I can make very rare exceptions as I did last year when I supported the Wickham Community Centre with a grant of £3,000.

Councillor Grants

A reminder that my Councillor Grants fund opened for applications at the beginning of June. Groups and organisations can apply for funding for both revenue (one-off) and minor capital projects. Revenue grants should generally be used to support short term project related costs e.g. a time limited activity group for children. It is expected that the grants will benefit a wide range of groups/activities: for example, vulnerable children or adults, young people, facilities for older people, community facilities, parish councils (but only for specific projects), projects by a school's PTA, local environment projects, community safety, etc.

Projects must be discussed with me [by email] BEFORE application is made and RECEIPTED INVOICES MUST BE PROVIDED upon completion. Don't miss out, make your application as soon as you can. See full criteria at – <https://www.hants.gov.uk/community/grants/grants-list/county-councillor>

Changes to Household Waste Recycling Service & Pedestrian Trial

Hampshire County Council has agreed changes to how its 24 Household Waste Recycling Centres [HWRCs] will operate when the relaxation of COVID 19 restrictions by the Government become effective. A recommendation to a trial allowing people to take waste, on foot, to selected HWRCs (to assess the feasibility of pedestrian access) has been approved. The booking system enabling residents to choose and secure a time period for taking their bulky household waste to their nearest centre is to be extended. Originally introduced to manage the number of visitors on-site at any one time and ensure social distancing rules could be adhered to, the system has also successfully eliminated queuing, congestion and pollution on surrounding roads. The easing of restrictions and reduced need for additional space between parked vehicles will mean that the number of booking slots available for each site can be increased.

Pedestrian access trial - A six-month trial allowing pedestrian access will be undertaken at three HWRCs: Hedge End, New Alresford and Waterlooville; permitting residents living near to those centres, to walk-in and drop off their waste during dedicated, pedestrian only access times. This will be on a controlled basis for one hour, up to three mornings a week. The trial will be continuously monitored to ensure that any issues are identified quickly. A full assessment will be completed once the trial has ended.

Glass recycling - Glass banks have been removed from HWRCs, following a decision made in October 2020. This move was due to be implemented on 1st April 2021 but was postponed due to the pandemic response. The decision was made in the light of steadily decreasing deposits of glass at HWRCs, as well as the cost of the glass banks at HWRCs now outweighing the value of the material from re-sale, meaning that the service operates at a loss.

With the vast availability of glass banks across Hampshire – such as in supermarket car parks - and a clear indication that glass will become collected from all household kerbsides by district and borough councils (as a result of the Government's Consistency in Collection policies), the withdrawal of glass banks from the HWRCs should not unduly impact on residents' ability to recycle glass bottles and jars.

People can find out where their district/borough/city council collects glass, as well as where their nearest glass bank is, on the website - <https://www.recyclenow.com/what-to-do-with/glass-0>

Waste Less

Hampshire County Council is offering grants of up to £5,000 to local community groups, charities, schools and small businesses, to support them in playing a part in helping Hampshire produce less household waste. Potential applicants must discuss their ideas with the County Council's Waste Prevention Team before applying - email waste.prevention@hants.gov.uk to arrange an informal discussion.

Grants are available for community projects which will introduce a new waste prevention, reuse or repair service to the local area - to help build a network of waste prevention services across the county. The fund is open to: community, neighbourhood or voluntary groups; registered charities; schools, colleges and universities; not-for-profit organisations (including social enterprises); businesses with fewer than 250 employees; and faith groups delivering community work; as well as parish and town councils. Full details of what can and cannot be funded, as well how to apply, are available online at: www.hants.gov.uk/waste-prevention-community

Originally introduced in 2017 to help kickstart or expand local initiatives which reduce household waste in Hampshire, the fund has supported over 52 projects to date. These include repair cafes, cookery and upcycling classes in schools, community fridges, community composting schemes and swap events. The projects have led to over 33,000 items being swapped, repaired or reused, as well as the involvement of over 250 schools and helped residents save over £100,000 through re-using, repairing and buying second-hand items in place of new.

Queen Elizabeth Country Park

Plans to provide more family-friendly cycling facilities at Queen Elizabeth Country Park have been announced, with the aim of helping more people to get on two wheels and also to enjoy off-road mountain biking. The 'Bike Base' project has been given the go ahead having secured funding from Sport England/British Cycling's Places to Ride fund and will deliver improvements to the existing cycle facilities especially for families or anyone who wants to try off-road biking for the first time.

The scheme will deliver a package of cycling improvements including:

- A mountain bike skills area will introduce riders to the different features and surfaces they will experience on the park trails. The area will enable them to hone skills and build confidence before venturing off-road
- The mini wheels track will provide a great place for young children to have their first adventure on two wheels
- A new 'green' cycle trail for mountain bikes – this short route close to the new skills area will provide novice riders with a chance to try out their skills. Green trails are aimed at novice riders with only basic bike skills required

- Improvements to the existing 'red' cycle trail to match the award-winning experience of the 'blue' trail already in the park (MTB Volunteer Trail of the Year 2018). Red trails are some of the most challenging trails and only for proficient mountain bikers with good off-road riding skills
- A bike wash and bike repair station
- Charge points for e-bikes
- Improved signage and information points
- Events and activities to encourage new or lapsed riders

The construction of Bike Base is expected to start later this year and complete in 2022.

Climate Change and Protecting our Harbours

The County Council has joined forces with Southern Water and other agencies to develop a sustainable long-term plan for Chichester and Langstone Harbours, with the aim of protecting the environment, supporting the local economy and the local community.

Chichester and Langstone Harbours are part of three linked harbours - the other being Portsmouth - on Hampshire's south-east coast. The area contains specially 'designated status' sites, which means they are protected for their wildlife or landscape qualities. However, climate change and human activities are putting increasing pressure on the natural environment which will be at greater risk from more unpredictable weather patterns in the future.

Now Hampshire County Council, along with 16 national and local organisations, have committed to an evidenced way forward, to devise a 'natural capital' plan for the harbours. This involves looking at water quality, pollution, wildlife habitats and more, with the aim of producing a clear vision to describe the condition of the environment in and around Chichester and Langstone harbours in 2030 and beyond. This will then enable all agencies to have their say in how improvements to the area can be made and biodiversity encouraged.

Hampshire County Council is a member of the Chichester Harbour Conservancy, Langstone Harbour Board, the Southern Regional Flood and Coastal Committee, and Southern Inshore Fisheries and Conservation Authority. As such, it has an important role in the planning and management of the coast, helping to conserve its unique qualities, and meeting the many challenges and pressures it faces.

Patricia Stallard

**Hampshire County Council
Divisional Member for Winchester Southern Parishes
[Denmead, Newlands, Boarhunt, Southwick, Wickham,
Knowle, Soberton & Newtown]**

pgstallard@aol.com / 02392 251484

Meon Valley Community Bus Association



Following the changes to Covid regulations introduced on Monday 19th July, the Meon Valley Community Bus will continue to run to a restricted timetable. To use the service, you will still be required to book.

On Mondays the service will run to Fareham. On Fridays it will run to either Winchester (1st and 3rd Fridays of each month), Waterlooville (4th Friday of each month), or Petersfield (2nd and 5th Fridays of each month).

Making a booking

Social distancing rules mean that we can still only take four passengers on each journey, or five if two of the passengers are a couple. To avoid having to turn passengers away we will again be operating a booking service. This will mean that once your booking is accepted, you can be sure you will have seat on the bus. Bookings can be made up to two weeks in advance between the hours of 10am and 4 pm. To make a booking please call one of the following: -

Ken 01329 830355

John 01489 877499

Bob 01489 878270

How we will make sure that the service is safe for you, the passenger, and our volunteer drivers

1. To comply with the Track and Trace system, we will record the names and contact details of all passengers who board the bus.
2. In line with most public transport operators, you will be required to wear a mask covering your nose and mouth and this should be worn whilst you are on the bus.
3. If necessary, hand sanitiser will be provided for you before you board the bus.
4. Please use the same seats for outward and return journeys.
5. We will have the windows open when there are passengers on the bus to ensure an adequate ventilation.

We will continue to monitor demand and, when appropriate, we will increase the number of days that the service operates. It is hoped that as the situation improves, we will once again revert to a full service.

Mondays to FAREHAM

0900 West Meon Thomas Lord PH
0903 Warnford Village Hall
0908 Exton The Shoe PH
0910 Meonstoke PO & Stores
0914 Meonstoke Pound Cottages
0919 Droxford Square (PARK & RIDE)
0923 Brockbridge The Hurdles
0927 Soberton Village Hall (PARK & RIDE)
0931 Webbs Green War Memorial
0934 Soberton Heath Chapel Road pond
0936 Soberton Heath Bold Forester PH
0938 Newtown Rookesbury Hall (PARK & RIDE)
0943 Hundred Acres
0955 Fareham Library
1000 Fareham Sainsbury's

Return:
1200 Fareham Sainsbury's
1205 Fareham Library

1st & 3rd Friday Each Month to WINCHESTER

0900 Soberton Village Hall (PARK and RIDE)
0904 Brockbridge The Hurdles
0907 Droxford Square (PARK and RIDE)
0913 Meonstoke Pound Cottages
0917 Meonstoke PO & Stores
0919 Exton The Shoe PH
0924 Warnford Village Hall
0944 Winchester Broadway
0951 River Park Leisure Centre

Return:
1155 River Park Leisure Centre
1200 Winchester Broadway

4th Friday Each Month to WATERLOOVILLE

0900 West Meon Thomas Lord PH
0903 Warnford Village Hall
0908 Exton The Shoe PH
0910 Meonstoke PO & Stores
0914 Meonstoke Pound Cottages
0919 Droxford Square (PARK & RIDE)
0923 Brockbridge The Hurdles
0927 Soberton Village Hall (PARK & RIDE)
0931 Webbs Green War Memorial
0934 Soberton Heath Chapel Road pond
0936 Soberton Heath Bold Forester PH
0938 Newtown Rookesbury Hall (PARK & RIDE)
0955 Waterlooville Waitrose
1001 Waterlooville Sainsbury's

Return:
1200 Waterlooville Sainsbury's
1205 Waterlooville Waitrose

2nd & 5th Friday Each Month to PETERSFIELD

0900 Soberton Village Hall (PARK and RIDE)
0904 Brockbridge The Hurdles
0907 Droxford Square (PARK and RIDE)
0913 Meonstoke Pound Cottages
0917 Meonstoke PO & Stores
0919 Exton The Shoe PH
0924 Warnford Village Hall
0945 Petersfield Waitrose

Return:
1200 Petersfield Waitrose

USEFUL INFORMATION

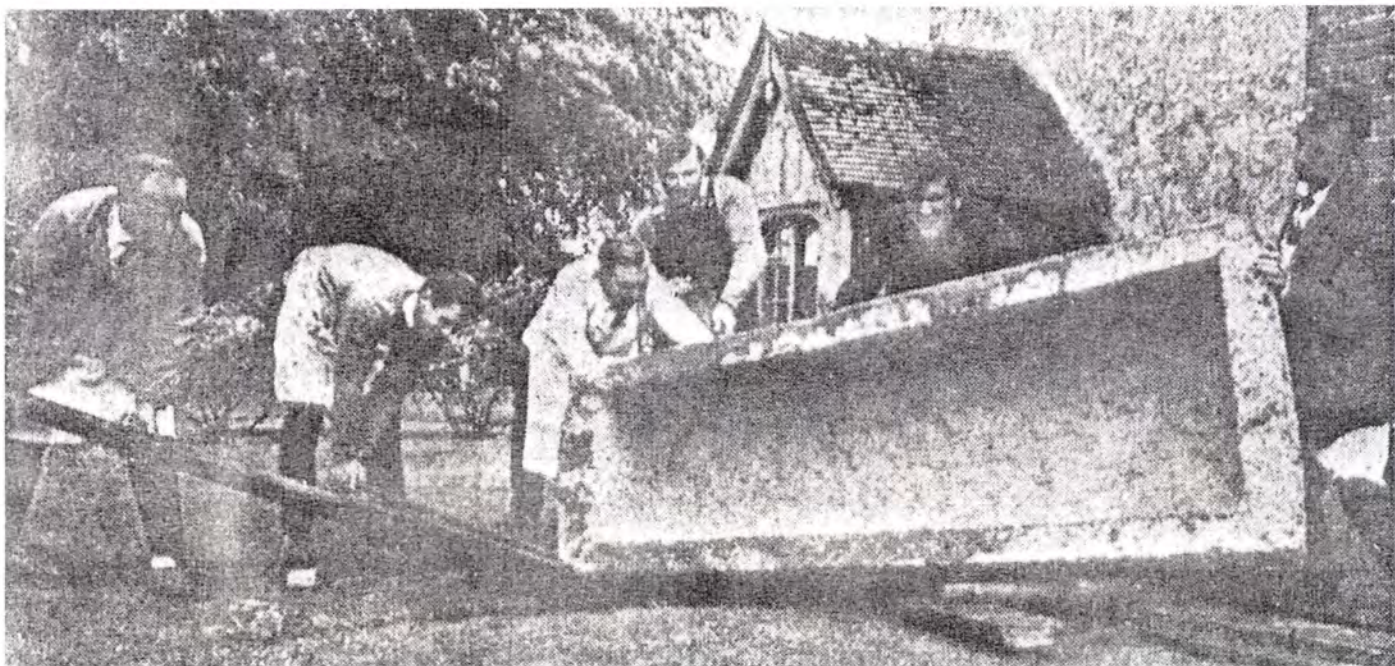
Any additions or changes, please contact the editor

USEFUL NUMBERS			LOCAL CLUBS AND INTEREST GROUPS		
Beat Surgeries (tbc)	Rookesbury Hall	Alternate Fridays 10:00 to 12:00	Brownies & Guides	Caroline Rogers	01489 877430
Doctors Surgeries	Droxford Wickham Denmead Bishops Waltham	01489 877588 01329 833121 02392 239630 01489 892288	Film Club	Volunteer required	
Baby Clinics	Wickham Comm.Centre Waltham Chase Village Hall	1st Wed 2.00-3.00 4 th Wed 10 – 11:30	Local History	Duncan Colin-Jones	01489 877237
Social Services Direct		0845 600 4555	Soberton Football	Keith Moran	01329 834897
Hants Carers Helpline		08457 221122	Soberton Players	Susan Hyland	01489 878724
NHS Direct		111	Table Tennis	Pete Woodacre Adrian Hunt	01489 877768 01489 878141
Age Concern	Head Office	0800 328 7154	Ladies Group	Liz Whales	01489 877712
CAB		01489 896376	Good Neighbours Group	Sue Mussellwhite Philomena Bergin	01489 877282 02392 632551
LOCAL FACILITIES			Soberton Lunch Club	Sandra Henderson Norman Chapman 12.30 - Church Room	01489 877978 01489 877378
Soberton Village Hall Booking	Katie Flannagan	07850 569548	First Friday of each month		
<i>sobertonvillagehall@googlemail.com</i> <i>www.sobertonvillagehall.co.uk</i>			Meon Valley Lions Club	Helpline	07443 753780
Rookesbury Hall Booking	Jenny Doney	01329 834392	COUNCILLORS		
<i>Bookings@rookesburyhall.co.uk</i>			Central Meon Valley Councillors	Frank Pearson Vicki Weston Linda Gemmell	01489 892822 01329 835161 01489 895023
Guide Hut Booking	Mrs. C. Rogers	01489 877430	County Councillor	Patricia Stallard	02392 251484
CHURCHES			SOBERTON PARISH COUNCIL <i>www.soberton.org</i>		
Newtown Church Wardens	Fra Wells Barry Rowswell	01329 834130 01329 834671	John Hyland Chairman	Northern Ward chair@soberton.org	
Soberton Church Wardens	Louise McEwen Norman Chapman	01489 877448 01489 877378	Jane Masterman Vice-Chairman	Southern Ward vicechair@soberton.org	
PCC Secretary(N)	(Acting) Barry Rowswell	01329 834671	David Salmon	Southern Ward Cllrsalmon@soberton.org	
PCC Secretary(S)	Norman Chapman	01489 877378	Bob Stranks	Southern Ward Cllrstranks@soberton.org	
Capt. Of Bells(S)	Noel Evans	01489 877271	Arabella Turner	Southern Ward Cllrturner@soberton.org	
Churchyard Keeper (S)	John Lester	01489 878557	Kevin Lampport	Southern Ward Cllrlampport@soberton.org	
			Sam Marland	Southern Ward Cllrmarland@soberton.org	
			Wendy Prangnell	Northern Ward Cllrprangnell@soberton.org	
			Neil Findlay	Northern Ward Cllrfindlay@soberton.org	
			Clerk and Proper Officer Jenny Clarke	clerk@soberton.org 01489 877836	

Please e-mail copy for the October / November magazine to
gill.highcroft@btinternet.com

NEXT COPY DATE - 20th September 2021

From the Archives.....



Above - The Roman Coffin or Sarcophagus to give it its correct name, has been outside St Peter's Church since the 1960's when it was moved from the Curll Chapel. A recent archaeological inspection revealed that it is a "superb" example made from Isle of Wight Bembridge limestone but is now rapidly deteriorating. One of only 6 in Hampshire, the History Society together with the PCC are looking at how this important artifact can be preserved for future generations as it is a real asset to the church and village. **Below** - The Sarcophagus today, resting on its lid. It was found in Brigdon or Brigden field behind Soberton House. Do any of our readers know the exact location?



(from the Archives of the Soberton & Newtown Local History Society) any additional information is always welcome.
Please Contact duncan.colinjones@btinternet.com or petewoodacre@gmail.com .